

# Stony Brook Software<sup>®</sup>

## M2EDIT Text Editor

### User's Guide

*Stony Brook*

*M2EDIT Text Editor*

*User's Guide*

---



**OrCAD<sup>®</sup>** 

*Electronic Design Automation Tools*

*Stony Brook*

*M2EDIT Text Editor*

*User's Guide*

---

Copyright © 1991 OrCAD L.P. and Gogesch Micro Systems, Inc. All rights reserved.

No part of this publication may be reproduced, translated into another language, stored in a retrieval system, or transmitted, in any form or by any means, electronic, mechanical, photocopying, recording, or otherwise without the prior written consent of OrCAD L.P.

Every precaution has been taken in the preparation of this publication. OrCAD assumes no responsibility for errors or omissions. Neither is any liability assumed for damages resulting from the use of the information contained herein.

OrCAD® is registered trademark of OrCAD L.P.

Stony Brook Software is a trademark of Gogesch Micro Systems, Inc.

Document Number: OR9059B 4-7-91



3175 NW Aloclek Drive

Hillsboro, Oregon 97124-7135

Sales & Administration	(503) 690-9881
Technical Support	(503) 690-9722
24-Hour Bulletin Board System	(503) 690-9791
FAX	(503) 690-9891

# C O N T E N T S

---

Chapter 1: Introducing M2EDIT .....	1
About this guide.....	1
Conventions .....	2
Terminology.....	2
Starting the environment.....	3
Configuring your own text editor .....	6
Chapter 2: Using M2EDIT.....	7
Editing files .....	7
Commands .....	7
Saving a file .....	8
More editing techniques.....	8
Moving around in the file.....	8
Getting help.....	8
Keyboard equivalents.....	9
Marking a block of text.....	9
Cut .....	9
Paste .....	9
Other block commands.....	9
Opening several files at once.....	10
Renaming files.....	10
Searching .....	11
Replacing occurrences of strings.....	11
Search for a line.....	12
Indenting blocks of text.....	12
Finding compilation errors.....	13
Chapter 3: Command reference .....	15
File .....	15
Split.....	16
Window.....	17
Next .....	17
Output.....	17
Dos.....	17
Help.....	17
Quit.....	17

Key .....	18
Continue .....	19
Exit .....	19
Editor Options command .....	19
Search direction .....	19
Replace occurrences .....	19
Prompt before replacing .....	19
Ignore case .....	20
Whole words only .....	20
Chapter 4: Editing keys .....	21
To move the cursor .....	21
To delete .....	22
To search .....	22
To mark and edit blocks of text .....	23
To cut and paste .....	23
To shift text .....	23
To edit more than one file .....	24
To use split screen editing .....	24
To save .....	24
Miscellaneous commands .....	24
Index .....	25



# *Introducing M2EDIT*

M2EDIT is a general purpose, full-screen text editor. With M2EDIT, you can:

- ❖ Edit more than one file at a time
- ❖ Display two files at the same time
- ❖ Move blocks of text to the left or right
- ❖ Redefine the editing function keys

When you are writing source code, M2EDIT will:

- ❖ Interpret compiler messages
- ❖ Identify errors in the source code
- ❖ Automatically position the cursor

If you prefer to use another editor, you can easily configure the design environment to use it, rather than M2EDIT. The section *Configuring your own text editor* later in this chapter tells how.

## **About this guide**

This guide is a working reference for M2EDIT. It provides step-by-step instructions for all the tasks you are likely to perform using M2EDIT.

Before you begin to explore M2EDIT, take a few minutes to install the software and register for technical support. Just follow the instructions in the *Installation & Technical Support Guide*.



*Conventions*      The notation conventions used in this guide are as follows:

- |                            |  |
|----------------------------|--|
| <b>BOLD CAPS</b>           | Used for main menu commands.   |
| <b>Bold</b>                | Used for other commands.   |
| <b>Courier bold</b>        | Used for text you enter.   |
| <b><i>Bold Italics</i></b> | Used for references to other manuals.  |
| <i>Italics</i>             | Used for references to other sections, chapters, or parts of this guide.                             |
| <B>                        | Brackets <> are used to show a key that you press. For example, <Esc> means to press the escape key. |
| "Prompt"                   | Quotation marks indicate program prompts.  |

The shadow box shown below indicates a program or system prompt. Any bold type following the prompt indicates text that you enter.

Abandon edits?

This kind of shadow box indicates an OrCAD menu.

Hardcopy  
Destination  
File

△ **NOTE:** Notes contain important reminders or hints.

▲ **CAUTION:** Cautions contain information about preventing damage to equipment, software, or data.

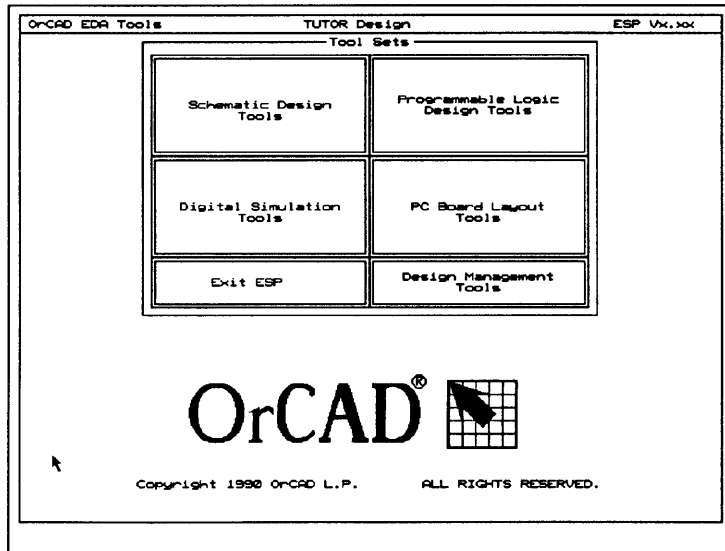
*Terminology*      The instructions in this guide use the terms "enter" and "type" to mean two different things. When the instructions tell you to enter something, you press the appropriate keys and end by pressing <Enter>. When the instructions tell you to type something, you press the appropriate keys, but do *not* press <Enter>.

**Starting the environment**

Start the OrCAD design environment after installation by entering the command shown below in bold at the system prompt:

```
C:\> orcad
```

In a moment, the design environment work screen displays.

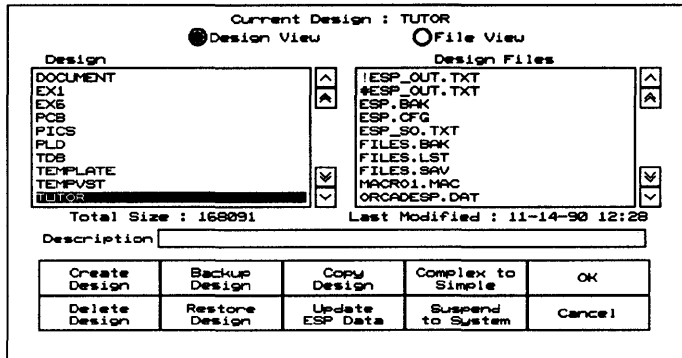


*Design environment work screen.*

For complete information about the design environment, see the *OrCAD/ESP Design Environment User's Guide*.

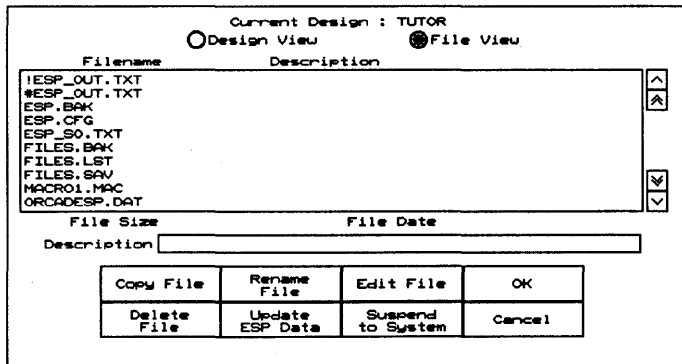
The text editor is available from any OrCAD tool set, including the Design Management Tools. To run M2EDIT, follow these steps:

1. Double-click the Design Management Tools button. The Design View screen (shown below) displays.



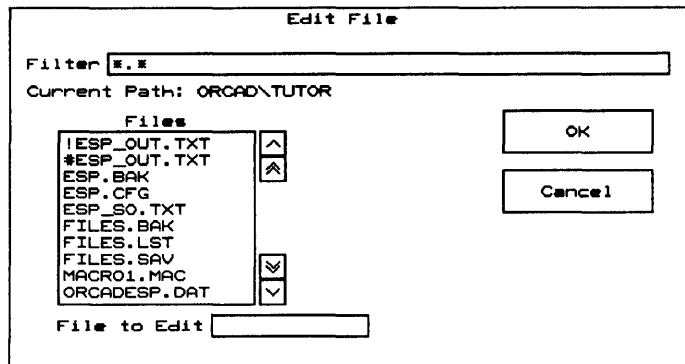
Design View screen.

2. Click the File View radio button. It is just above the Design Files list box. The File View screen (shown below) appears.



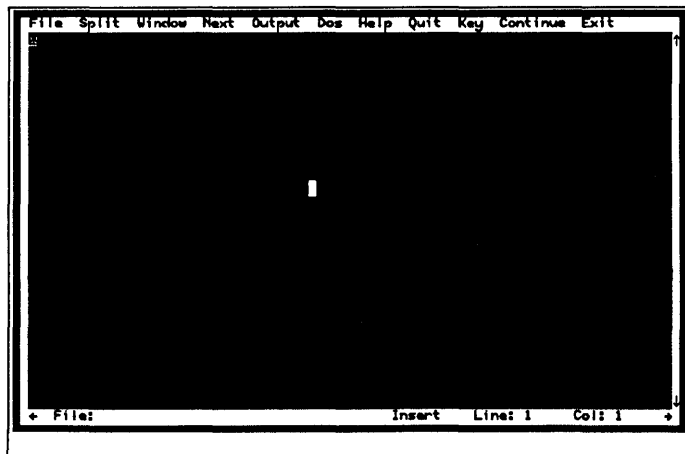
File View screen.

3. Click the Edit File button. There are Edit File buttons in every tool set. All Edit Files buttons access the configured text editor. The File to Edit work screen (shown below) displays.



*File to Edit work screen.*

4. Select a file to edit. You can either select it from the list box or enter a filename in the File to Edit text entry box at the bottom of the screen. If no name is entered, M2EDIT opens a new, blank file.
5. Click the OK button. M2EDIT opens the file that you selected.



*M2EDIT work screen.*

Now that you are in M2EDIT, turn to chapter 2, *Using M2EDIT*.

**Configuring your own  
text editor**

You are not *required* to use M2EDIT as your text editor. You may already have a text editor that you know how to use, and would like to integrate it with the OrCAD design environment rather than learn to use a new editor. It is easy to do this. Just follow these steps:

- 1 Click once on the **Design Management Tools** button.
- 2 Select **Configure ESP** from the menu that displays in the upper left corner of the screen.
- 3 Enter the complete path and name of your editor in the **Text Editor** entry box.
4. Select **OK**.

The OrCAD design environment is now configured to run your text editor whenever you select **Edit File** from any of the tool set work screens.

For more information about the design environment, see the *OrCAD/ESP Design Environment User's Guide*. For more information about the OrCAD tool sets, see the manuals accompanying the software.



## Using M2EDIT

---

### Editing files

Whenever you have the M2EDIT window displayed, you can enter and edit text. As you begin to type, here are some hints to keep in mind:

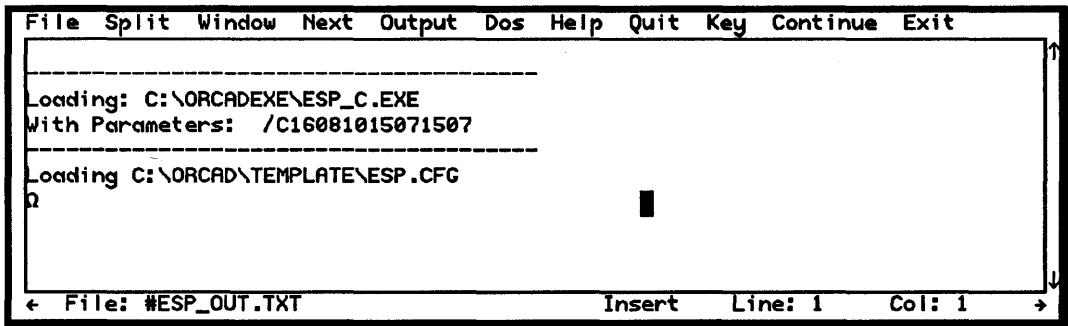
- ❖ Use the <Shift> key to type capital letters, as you would on a typewriter.
- ❖ If you make a mistake while typing, use the <Del> key to delete characters to the left of the cursor. You can move up, down, or across characters without erasing them using the arrow keys.
- ❖ At the end of a line, press the <Return> key.
- ❖ A line of text can be no more than 128 characters long.
- ❖ Many M2EDIT functions can be performed using either the mouse or the keyboard. If you have a mouse installed on your system, two cursors display when you are in M2EDIT:
  - ❖ The text cursor is a flashing underline \_
  - ❖ The mouse cursor is a solid block ■

When you type characters, they appear at the text cursor's location, not the mouse cursor. To move the text cursor to the mouse cursor's position, click the left mouse button.

### Commands

Important editing commands are listed across the top of the screen. To select a command, move the mouse cursor over the command name and click the left mouse button.

For a description of what each command does, see *Chapter 3: Command reference*.



*M2EDIT commands.*

---

## Saving a file

Use the key command <Alt><O> to save the file when you are done editing. Use the command <Alt><E> to save the file and then exit M2EDIT.

---

## More editing techniques

The next sections give step by step directions describing how to use M2EDIT to perform common editing tasks.

### Moving around in the file

The M2EDIT window has ↑ and ↓ arrows on the right border and ← and → arrows on the bottom border.

To move down into the file, move the cursor to the ↓ symbol on the lower right border, and then press the left mouse button. M2EDIT continues scrolling until you release the button, or until the end of the file is reached.

You can also scroll up, left, and right by pointing to the appropriate arrows in the window border and pressing and holding the left mouse button.

In addition to pointing to the arrows, you can point anywhere in the lower half of the right border to scroll down, and anywhere in the upper half to scroll up.

### Getting help

M2EDIT reserves the right mouse button for displaying help. If you click the right mouse button anywhere inside the window, you will see helpful information display.

To get help on an editor command, point to the command on the window border and click the right mouse button.

**Keyboard equivalents**

Many of the explanations and instructions in this book use mouse terminology. If you prefer to use the keyboard, however, there are keyboard equivalents to nearly every mouse-performed operation. Instead of moving the mouse to move the cursor, you can move using the keyboard commands shown in the tables shown in *Chapter 4: Editing keys quick reference*.

**Marking a block of text**

Block commands are a set of commands that operate on a block of text that you select. To mark a block of text, follow these steps:

1. Move the mouse cursor to the beginning of the text.
2. Press and hold the left mouse button.
3. Move to the end of the block of text. M2EDIT highlights the selected text as you move.
4. Release the mouse button.

After marking the text, you can use any Block command.

**Cut** To cut the marked text, press <F5>. M2EDIT cuts the text and moves it to the paste buffer.

**Paste** To paste the cut text:

1. Place the cursor at the position where you want to insert the text.
2. Press <F7>. M2EDIT inserts the contents of the paste buffer into the text at the cursor position.

You can insert text in the paste buffer as many times as you want. The cut text remains in the paste buffer until you do another cut.

**Other block commands**

You can mark blocks of text in any of the following ways:

- ❖ Press <Ctrl><K><B> or <F3> to begin marking. Move the cursor to the end of the block.
- ❖ Press <Ctrl><K><K> to mark the end of a block.



- ❖ Press <Ctrl><K><T> to mark a word containing the cursor.
- ❖ Press <Ctrl><K><L> to mark a line containing the cursor.
- ❖ Press <Ctrl><K><R> to read a file and mark the text that is read in. M2EDIT prompts you to enter the name of the file.

M2EDIT highlights the marked block on the screen. You can now perform any of the following commands:

- ❖ Press <Ctrl><K><C> to copy the marked block at the cursor location.
- ❖ Press <Ctrl><K><V> to move the marked block to the cursor location, deleting it from the original position.
- ❖ Press <Ctrl><K><Y> or <F5> to cut the text and save it to the paste buffer. This is also a convenient way to delete large amounts of text.
- ❖ Press <Ctrl><K><W> to write the marked text to a file. M2EDIT asks you to enter a file name.
- ❖ <Ctrl><K><H> to turn the marked block off.

### Opening several files at once

M2EDIT can open more than one file at a time. When you open a new file, M2EDIT automatically makes room for it. M2EDIT may save some files in order to make room for the new one.

### Renaming files

You can rename any file while in M2EDIT.

While editing the file, press <Alt><R>. M2EDIT prompts you to enter a new file name.

Enter a new name in the entry box. M2EDIT renames the file. When you write the file to disk, M2EDIT uses the new name.

**Searching** To search for one occurrence of a string:

1. Press <Shift><F1> or <Ctrl><Q><F>. M2EDIT asks you to enter the string.
2. Type the string to search for.
3. To search forward, press<Enter> or <F2>.

To search backwards, press <F1>. M2EDIT moves the cursor in the direction requested to the first location of the string.

To search for more than one occurrence of a string:

1. Follow steps 1 through 3 above.
2. Do one or the other of the following steps:
  - ❖ Press <F1> to search backwards for the next occurrence of a string.
  - ❖ Press <F2> to search forward for the next occurrence of a string.

**Replacing occurrences of strings**

To replace occurrences of a string:

1. Press <Ctrl><Q><A>. M2EDIT asks you to enter the search string.
2. Type the search string, terminating it with <Enter>. M2EDIT asks you to enter the replacement string.
3. Type the replacement string, terminating it with <Enter>. The editor options menu displays.

Editor Options			
Search direction	<b>Forward</b>	Backward	
Replace occurrences	<b>To end</b>	Global	Block
Prompt before replacing	No	<b>Yes</b>	<b>Yes</b>
Ignore case	No	<b>Yes</b>	
Whole words only	<b>No</b>	Yes	
	Okay	<b>Cancel</b>	

*Editor options menu.*

4. Select the options to apply to the search, then select **Okay**. For more information about the options, see *Chapter 3: Command reference*.

**Search for a line**      To search for a specific line in your file:

1. Press <Shift><F2>. M2EDIT asks you to enter the line number.

Lines are assigned numbers in the order they are read from the file. If you have inserted or deleted text from the file during the current edit session, M2EDIT continues to identify the lines according to their positions in the original file.

2. Type the line number at the prompt and press <Enter>. M2EDIT moves to the line specified.

**Indenting blocks of text**      The indent function is a simple way to move lines or blocks of text.

To shift a line of text:

1. Move the cursor at the line that you want to shift.
2. Do one or the other of the following steps:
  - ❖ Press <Shift><F9> to shift the line four characters to the left.
  - ❖ Press <Shift><F10> to shift the line four characters to the right.
3. Press <Shift><F9> or <F10> until the line is positioned where you want it.

To shift a block of text:

1. Position the cursor at the line that you want to shift.
2. Do one or the other of the following steps:
  - ❖ Press <Shift><F9> to shift the line four characters to the left.
  - ❖ Press <Shift><F10> to shift the line four characters to the right.

3. Press <Shift><F9> or <F10> until the line is positioned where you want it.
4. Do one or the other of the following steps:
  - ❖ Press <Shift><F7> to shift the next line by the same amount.
  - ❖ Press <Shift><F5> to shift the previous line by the same amount.
5. Repeat step 4 until the entire block of text is shifted.

**Finding compilation errors**

To move the cursor to the next compilation error, press <F8>. M2EDIT positions the cursor at the next error in the source file. The error text is displayed on the bottom border of the window.





## *Command reference*

This chapter describes the commands that appear on the M2EDIT command line, in order of their appearance.

**File** The File command opens a file. Follow these steps:

1. Click on **File** in the command line or press <Alt><F>. M2EDIT displays the prompt shown below.

File name? <input type="text"/>
------------------------------------

*File prompt.*

2. Type the file name and press <Enter>. The name can include a device, directory, or extension. The file name must be the name of a file in the current directory.

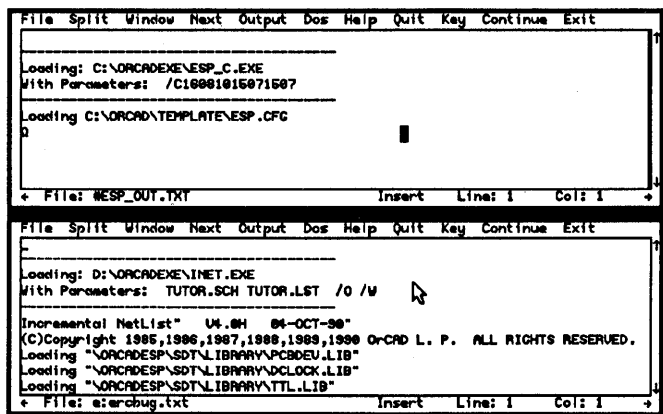
If the file does not exist, M2EDIT creates a new file when it is saved. If the file already exists, M2EDIT opens it and displays it in the current window.

**Split** Use **Split** command to display two files or two different parts of the same file simultaneously.

△ *NOTE: If you display the same file in both windows, M2EDIT displays the unchanged version in the second window until you move the cursor to the second window. At that time, the changes you made in the first window appear in the second window.*

To split the screen, follow these steps:

1. Press <Alt><S> or click on **Split** at the top of the screen. M2EDIT asks for a file name.
2. Type the name of the file you want to open or create in the second window and press <Enter>. M2EDIT opens a second window.



*Split screen editing.*

To return to full screen editing, select **Split** again or press <Alt><S>. M2EDIT displays the file in the current window in the full screen. The other file continues to remain open in the background.

- Window** This command moves the cursor to the inactive window. You can click **Window** in the command line or press <Alt><W>.
- Next** You can have more than one file open for editing at a time. When you do, pressing <Alt><N> or clicking on **Next** in the command line tells M2EDIT to display the next open file. Each time you select **Next**, M2EDIT cycles to the next file, eventually returning to the original file.
- Output** The **Output** command saves the file on disk.
- Dos** To perform a system command while using M2EDIT, follow these steps:
1. Select **Dos**. M2EDIT asks for the system command.
  2. Type the DOS command and press <Enter>. M2EDIT runs the DOS command, leaving the file you are editing open.
  3. Press any key to return to the file you were editing.
- Help** This command displays helpful information.
- Quit** To cancel the changes you have made to a file, press <Alt><Q>. The current file is removed from memory and is not updated on disk. M2EDIT then returns to the environment.
- If you are editing in split screen mode, pressing <Alt><Q> once closes the bottom window. Pressing <Alt><Q> again closes the large window and exits M2EDIT.



**Key** If you are accustomed to an editor other than M2EDIT, and would prefer to use the editing keys you are used to, you can reassign the editing keys.

To reassign M2EDIT keys, follow these steps:

1. Press Alt<K> or click on **Key** in the command line. M2EDIT displays a control panel that lists M2EDIT functions and their key assignments.
2. Select the function to reassign.
3. Press the key or key combination to assign to the function. You can use the following keys:
  - ❖ F1 through F10 and their shifted versions
  - ❖ Control keys, except <Ctrl><I> and <Ctrl><M>
  - ❖ <Home>, <End>, <PgUp>, <PgDn>, <Ins>, <Del>
  - ❖ <Ctrl><Home>, <Ctrl><End>, <Ctrl><PgUp> and <Ctrl><PgDn>

Editor function keys			
Beginning of a line	Home	Paste text	F7
End of line	End	Shift line left	Shift F9
Page up	PgUp	Shift line right	Shift F10
Page down	PgDn	Shift prev line	Shift F5
Top of file	Ctrl/PgUp	Shift next line	Shift F7
Bottom of file	Ctrl/PgDn	Move to prev char	Ctrl/S
Delete character	Del	Move to next char	Ctrl/D
Delete line	F6	Move to prev line	Ctrl/E
Search string	Shift F1	Move to next line	Ctrl/X
Search forward	F2	Move to prev word	Ctrl/A
Search backward	F1	Move to next word	Ctrl/F
Replace string	Shift F4	Toggle Overwrite	Ctrl/V
Replace next	F4	Insert at cursor	Ctrl/M
Find line	Shift F2	Insert above	Ctrl/N
Find error	F8	Delete word	Ctrl/T
Mark text	F3	Make uppercase	Ctrl/U
Cut text	F5	Repeat search/repl	Ctrl/L
	<input type="button" value="Okay"/>		Cancel

*Editor function keys screen.*

4. To accept the changes, click **Okay** or press <Enter>. To cancel the changes, click **Cancel** or press <Esc>.

**Continue** To continue a compilation, select **Continue** or press <Alt><C>. The environment continues compiling the file that had an error and placed you in M2EDIT. If you were not doing a compilation, this key is the same as **Exit**.

**Exit** To leave M2EDIT and return to the environment, select **Exit** or press <Alt><E>.

**Editor Options command** Press <Alt><P> to enter search and repeat parameters. M2EDIT displays a menu showing search and replace options.

Editor Options			
Search direction	<b>Forward</b>	Backward	
Replace occurrences	<b>To end</b>	Global	Block
Prompt before replacing	No	<b>Yes</b>	
Ignore case	No	<b>Yes</b>	
Whole words only	<b>No</b>	Yes	
	Okay	<b>Cancel</b>	

*Search direction* Set **Search direction** to **Forward** to search forward, or **Backward** to search backward in the file.

*Replace occurrences* Set **Replace occurrences** to:

- ❖ **All** to replace the strings in the entire file.
- ❖ **Rest** to replace strings from the cursor position to the end of the file.
- ❖ **Block** to replace strings only in the marked block.

*Prompt before replacing* Set **Prompt before replacing** to **Yes** if you want M2EDIT to ask for confirmation before each string it replaces. Set **Prompt before replacing** to **No** if you want M2EDIT to make the replacements without asking.

*Ignore case*      Set **Ignore case** to **Yes** if you want M2EDIT to match the search string regardless of the case of the text. Set **Ignore Case** to **No** if you want M2EDIT to replace just those search strings that match the search string case exactly.

*Whole words only*      Set **Whole words only** to **Yes** if you do not want M2EDIT to match strings inside a word. Set **Whole words only** to **No** if you want M2EDIT to match the string regardless of word boundaries.



## Editing keys quick reference

To move the cursor

<i>Function</i>	<i>Key</i>	<i>Alternate</i>
Forward one character	<Ctrl><D>	←
Backward one character	<Ctrl><S>	→
To the next word	<Ctrl><F>	
To the previous word	<Ctrl><A>	
Up one line	<Ctrl><E>	↑
Down one line	<Ctrl><X>	↓
Up one screen	<Ctrl><R>	<Page Up>
Down one screen	<Ctrl><C>	<Page Down>
To the beginning of the file	<Ctrl> <Page Up>	
To the end of the file	<Ctrl> <Page Down>	
To the beginning of a line	<Home>	<F9>
To the end of a line	<End>	<F10>
To a line (by number)	<Shift><F2>	
To the next compilation error	<F8>	

**To delete**

<i>Function</i>	<i>Key</i>	<i>Alternates</i>
Character at the cursor position	<Del>	<Delete>, <Ctrl><G>
Character at the left of the cursor	<Backspace>	
Word containing the cursor	<Ctrl><T>	
Line the cursor is on	<Ctrl><Y>	<F6>
From the cursor to the end of the line	<Ctrl><Q><Y>	

**To search**

<i>Function</i>	<i>Key</i>	<i>Alternate</i>
Find text you specify	<Shift><F1>	<Ctrl><Q><F>
Replace text you specify	<Shift><F4>	
Find and replace text you specify	<Ctrl><Q><A>	
Search again	<Ctrl><L>	
Continue search backward	<F1>	
Continue search forward	<F2>	
Replace next occurrence	<F4>	

**To mark and edit blocks of text**

<i>Function</i>	<i>Key</i>	<i>Alternate</i>
Begin marking a block	<Ctrl><K><B>	<F3>
End marking a block	<Ctrl><K><K>	
Turn markers on and off	<Ctrl><K><H>	
Mark a single word	<Ctrl><K><T>	
Mark one line	<Ctrl><K><L>	
Copy a block to cursor location	<Ctrl><K><C>	
Cut block	<Ctrl><K><Y>	<F5>
Read a block from a file	<Ctrl><K><R>	
Write a block to a file	<Ctrl><K><W>	

**To cut and paste**

<i>Function</i>	<i>Key</i>	<i>Alternate</i>
Move marked text to the cursor location	<Ctrl><K><V>	
Cut marked text	<F5>	<Ctrl><K><Y>
Paste text at cursor location	<F7>	

**To shift text**

<i>Function</i>	<i>Key</i>	<i>Alternate</i>
Shift line left 4 characters	<Shift><F9>	
Shift line right 4 characters	<Shift><F10>	
Shift previous line the same	<Shift><F5>	
Shift next line the same	<Shift><F7>	

**To edit more than one file**

<i>Function</i>	<i>Key</i>	<i>Alternate</i>
Open a new file	<Alt><F>	
Cycle to the next file	<Alt><N>	
Rename the current file	<Alt><R>	

**To use split screen editing**

<i>Function</i>	<i>Key</i>	<i>Alternate</i>
Toggle between split and unsplit screen	<Alt><S>	
Move between windows	<Alt><W>	

**To save, exit, or quit**

<i>Function</i>	<i>Key</i>	<i>Alternate</i>
Save the current file	<Alt><O>	
Exit to the environment	<Alt><E>	
Discard changes to the current file	<Alt><Q>	

**Miscellaneous commands**

<i>Function</i>	<i>Key</i>	<i>Alternate</i>
Run a system command	<Alt><D>	
Toggle insert and overstrike mode;between insert and overstrike mode	<Ins>	<Ctrl><V>
Convert to uppercase	<Ctrl><U>	<Alt><U>
Get help	<Alt><H>	Right mouse button
Define keys	<Alt><K>	
Show version number	<Alt><V>	

<Del> 7  
 <Return> 7  
 <Shift> 7

## A

Arrows 8

## B

Begin marking 9  
 Block commands 9  
   Begin marking a block 9, 10  
   Copy a block 10  
   Cut a marked block 9  
   End marking a block 9  
   Mark a line 9  
   Mark a word 9  
   Move a block 10  
   Paste a block 9  
   Read a file 9  
   Shifting text right or left 12  
   Turn off a block 10  
   Write a block to disk 10  
 Brackets 2

## C

Command reference 15  
 Commands 2, 7  
   Continue 19  
   Dos 17  
   Editor Options 19  
   Exit 19  
   File 15  
   Help 17  
   Key 18  
   Next 17  
   Output 17  
   Quit 17  
   Split 16  
   Window 17  
 Compilation error 13  
 Configuring 6

Continue command 19  
 Conventions 2  
 Convert to uppercase 24  
 Copy a block 10  
 Cursor  
   Mouse 7  
   Text 7  
 Cut 9  
 Cut and paste 23

## D

Define keys 24  
 Delete 22  
   Large amounts of text 10  
 Design environment 3  
 Design Management Tools 4  
 Display two files 16  
 Dos command 17

## E

Edit File 5, 6  
   Configuring 6  
 Edit more than one file 24  
 Editing files 7  
 Editing keys 21  
 Editor function keys 18  
 Editor Options command 19  
 Exit command 19, 24

## F

File command 15  
 Files  
   Opening multiple 10  
 Find text you specify 22  
 Finding compilation errors 13

## H

Help 8, 24  
 Help command 17



## **I**

Ignore case 20  
Indenting blocks of text 12

## **K**

Key command 18  
Keyboard 7  
Keyboard equivalents 9

## **L**

Line number 12  
Lines  
    Ending 7  
    Maximum length 7

## **M**

Main menu commands 2  
Mark and edit blocks of text 9, 23  
Mouse 7  
Move a block 10  
Move between windows 24  
Moving around in the file 8

## **N**

Next command 17  
Notation conventions 2

## **O**

Okay 19  
Open a new file 24  
Opening several files at once 10  
Output command 17

## **P**

Paste 9  
Paste buffer 10  
Prompt before replacing 19

## **Q**

Quit 24  
Quit command 17  
Quotation marks 2

## **R**

Read a file 10  
Renaming files 10, 24  
Replacing occurrences of strings 11, 19  
Run a system command 24

## **S**

Save 24  
Saving a file 8  
Scrolling 8  
Searching 11, 22  
    And replace 11  
    Direction 11, 19  
    For a line number 12  
    Repeat 11  
Shift text 12, 23  
Show version number 24  
Split command 16  
Split-screen editing 16, 24

## **T**

Terminology 2  
Text cursor 7  
To move the cursor 21  
Toggle  
    Insert and overstrike mode 24  
    Split and unsplit screen 24  
Turn markers on and off 23

## **U**

Using M2EDIT 7

## **W**

Whole words only 20  
Window command 17  
Writing a block to a file 10

**Stony Brook Software<sup>®</sup>**  
**for**  
**OrCAD<sup>®</sup>**