

5404283

00.29.00.0

29 WIRING DIAGRAM INDEX
MOD A

NAME	SECTION	PART NO.	LOGIC
POWER SUPPLY 50 CYCLE		5373565	00.29.01.1
POWER SUPPLY 60 CYCLE		5373566	00.29.01.1
NUM KYBD AND INTERPOSERS	1 AND 2	5373553	00.29.02.1
* NUM KYBD AND INT / AUX DUP	1 AND 2	5373564	00.29.02.1
64 CHARACTER KYBD	3 AND 4	5373554	00.29.03.1
CARD FEED, M.P., CLEAR, REL	5 AND 6	5373555	00.29.04.1
* CARD FEED, M.P., CLEAR, REL / MCI	5 AND 6	5373562	00.29.04.1
KEYBOARD RESTORE	7 AND 8	5373556	00.29.05.1
* KEYBOARD RESTORE / MCI	7 AND 8	5373563	00.29.05.1
ESC MAG DUP, SKIP / VLCD	9 AND 10	5373557	00.29.06.1
PUNCH CLUTCH	11 AND 12	5373558	00.29.07.1
* PUNCH CLUTCH / HSS	11 AND 12	5373570	00.29.07.1
PRINT	13 AND 14	5373559	00.29.08.1
* INTERPERSE GANG PUNCH	15 AND 16	5373569	00.29.08.2
COMPONENT LOCATION		5373560	00.29.09.0
KEYBOARD AND CAM REF		5373561	00.29.10.0
* KEYBOARD AND CAM REF / HSS ULCD		5404109	02.29.10.0

* NOTE XI

NOTES
XI

PAGES MARKED WITH ASTERISK ARE FEATURE
PAGES. THEY WILL REPLACE THE STANDARD
PAGES WHEN THE MACHINE HAS FEATURES
INSTALLED.

INTERNATIONAL BUSINESS MACHINES CORP.	
NAME	SYSTEMS DIAGRAM
DESIGN	RJE 29NOV65
DETAIL	RJE 29NOV65
CHECK	RAS 29NOV65
APPRO	RSS 30NOV65
	DRAW IDI 11MAR66
	CHECK

DATE	CHANGE NO.
28 OCT 65	205425 C
13 JAN 66	205425
11 MAR 66	205542
11 APR 66	205632

DATE	CHANGE NO.

NOTE
X PRINT TO ENG. SPEC. NO.
895291

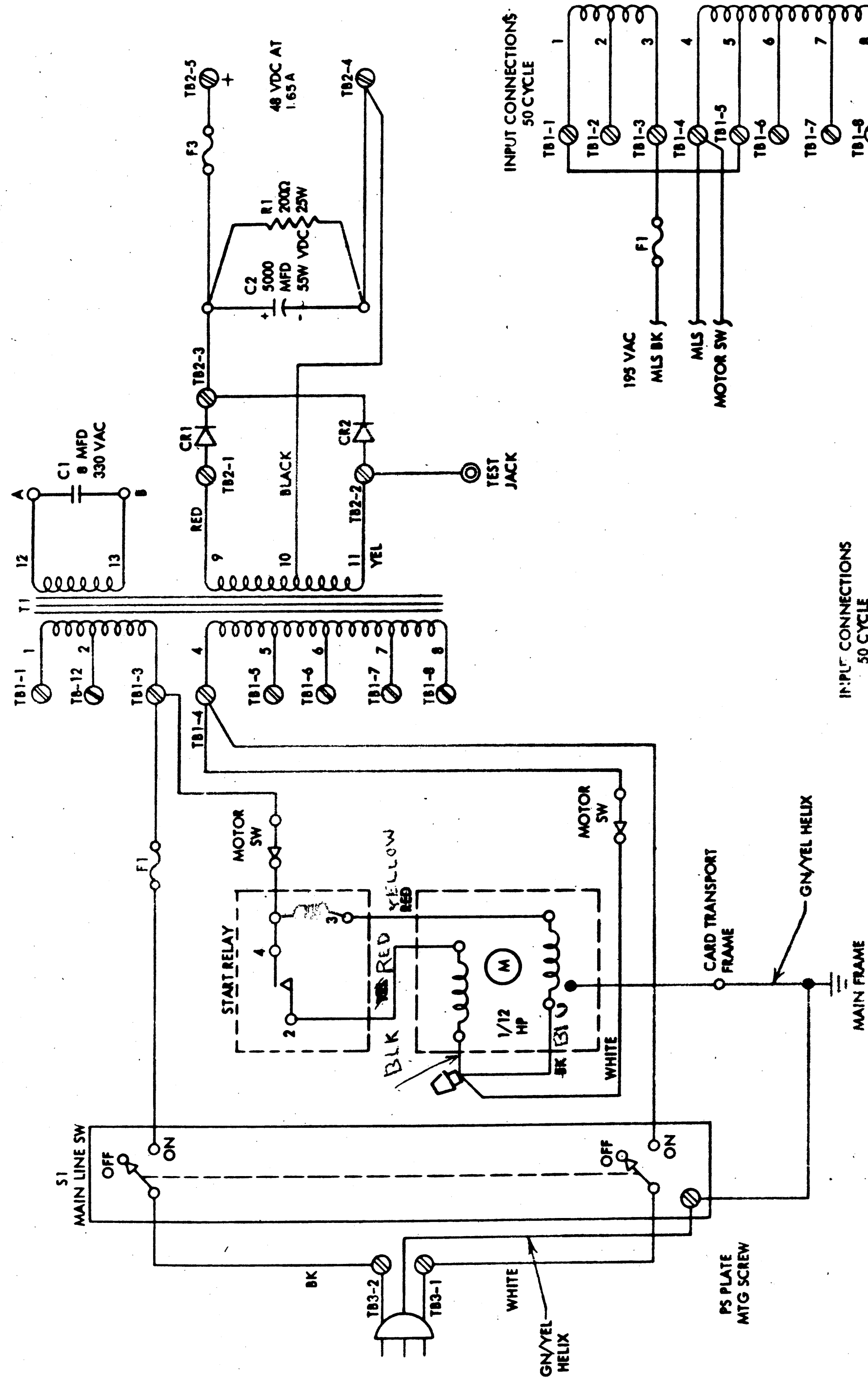
DEVELOPMENT NO.
00.29.00.0

5404283

5373565

POWER SUPPLY 50 CYCLE
48V AT 1.65A POWER SUPPLY

00.29.01.1

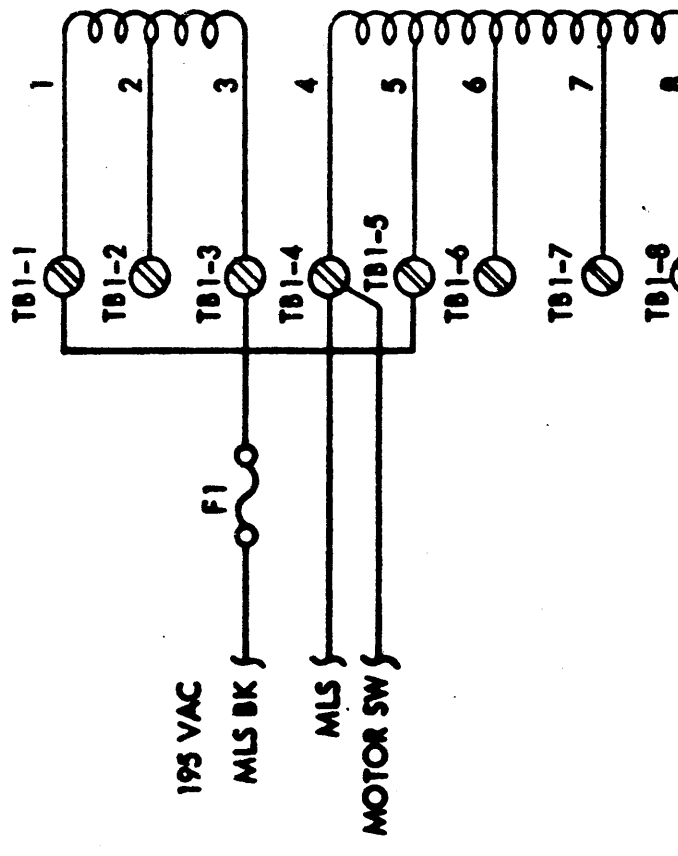


NAME	PART NUMBER
T1	5404086
C1	5247156
C2	208222
CR1 2A	5404082
CR2 2A	5404082
R1	221110
S1	5372190

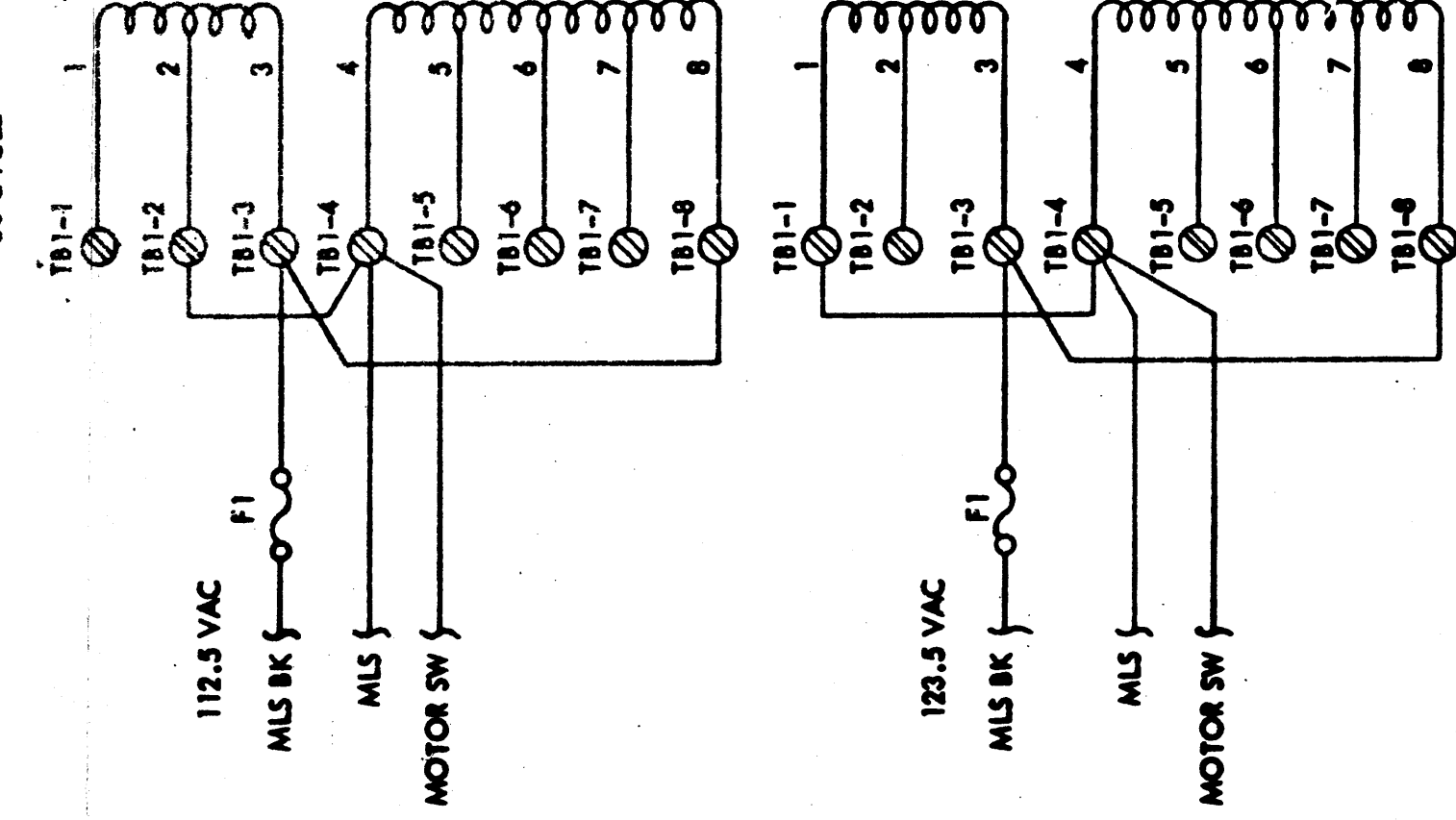
LONG TIME LAG FUSE		
AMPS	PART NO.	VOLTS AC
4.0	107665	112.5
4.0	107665	123.5
2.0	92734	195
2.0	92734	220
2.0	92734	235

FUSE	AMPS	PART NO.	VOLTS DC
F3	2	3344	48

INPUT CONNECTIONS
50 CYCLE



INPUT CONNECTIONS
50 CYCLE



INTERNATIONAL BUSINESS MACHINES CORP.	
NAME	SYSTEMS DIAGRAM
00.29.01.1	
DESIGN WT	5-6-65 (MORF)
CHECK LF	5-6-65 (DRAW 1) (4-30-65)
APPROV (R.L.J.)	5-6-65 (CHECK)

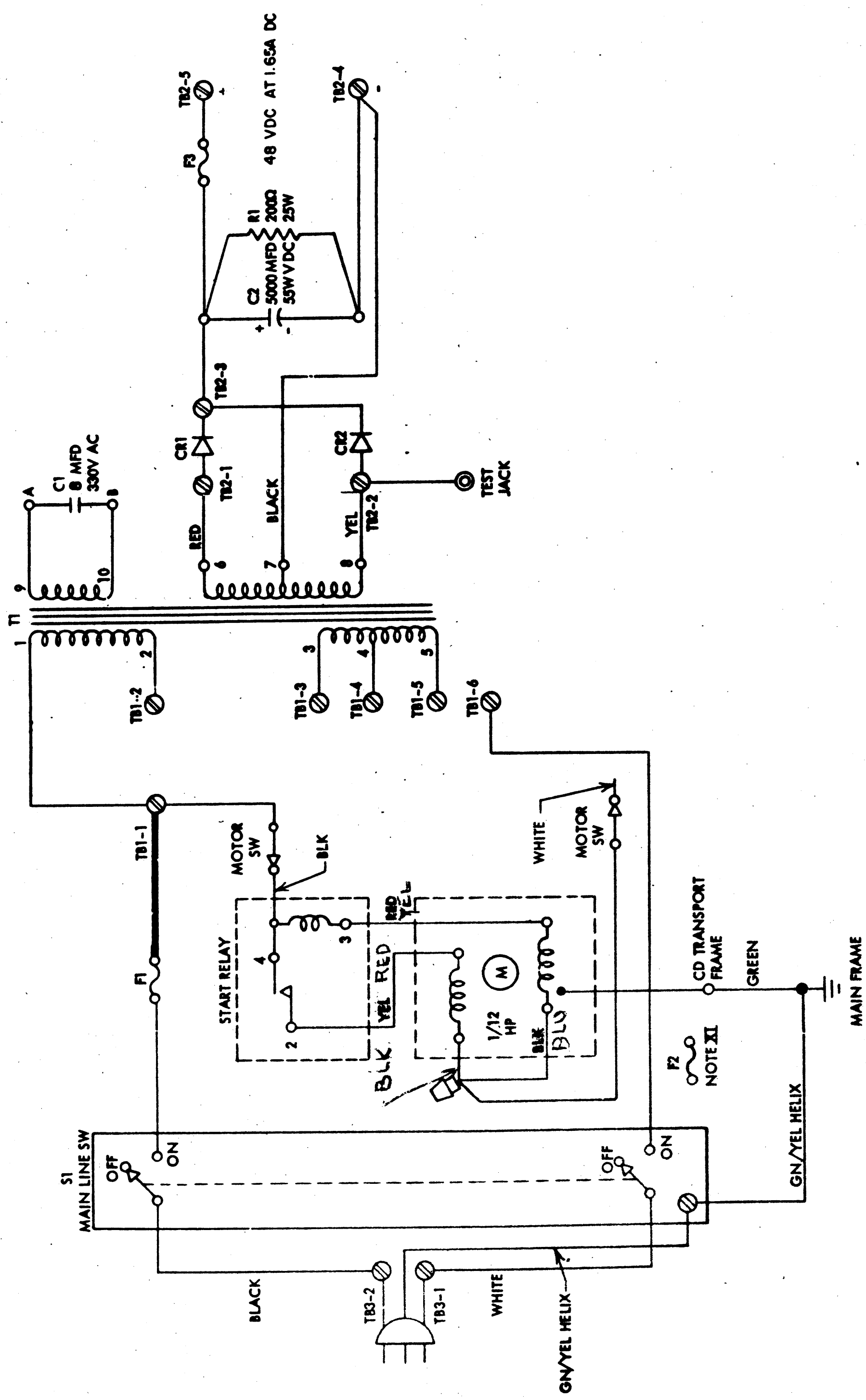
DATE	CHANGE NO.
7-6-65	205332
	51-294

NOTE
PRINT TO ENG. SPEC. NO. 895291

DEVELOPMENT NO.
5373565

00.29.01.1

POWER SUPPLY 60 CYCLE
48V AT 165A POWER SUPPLY



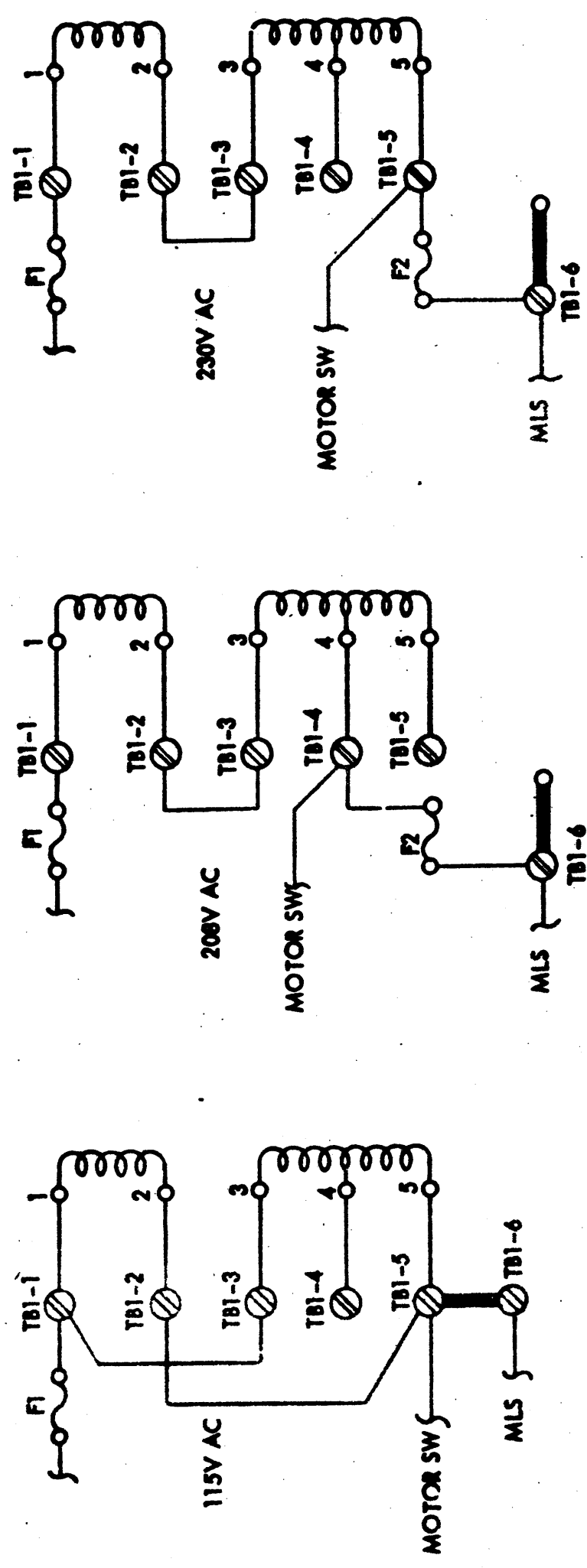
MAIN FRAME

NAME	PART NO.
T1	5404081
C1	5247156
C2	208222
CR1 2A	5404082
CR2 2A	5404082
R1	221110
S1	5972190

LONG TIME LAG FUSE		
AMPS	PART NO.	VOLTS AC
F1	107665	115
F1	92734	208
F1	92734	230
F2	92734	208
F2	92734	230

FUSE	AMPS	PART NO.	VOLTS DC
F3	2	3344	48

INPUT CONNECTIONS 60 CYC



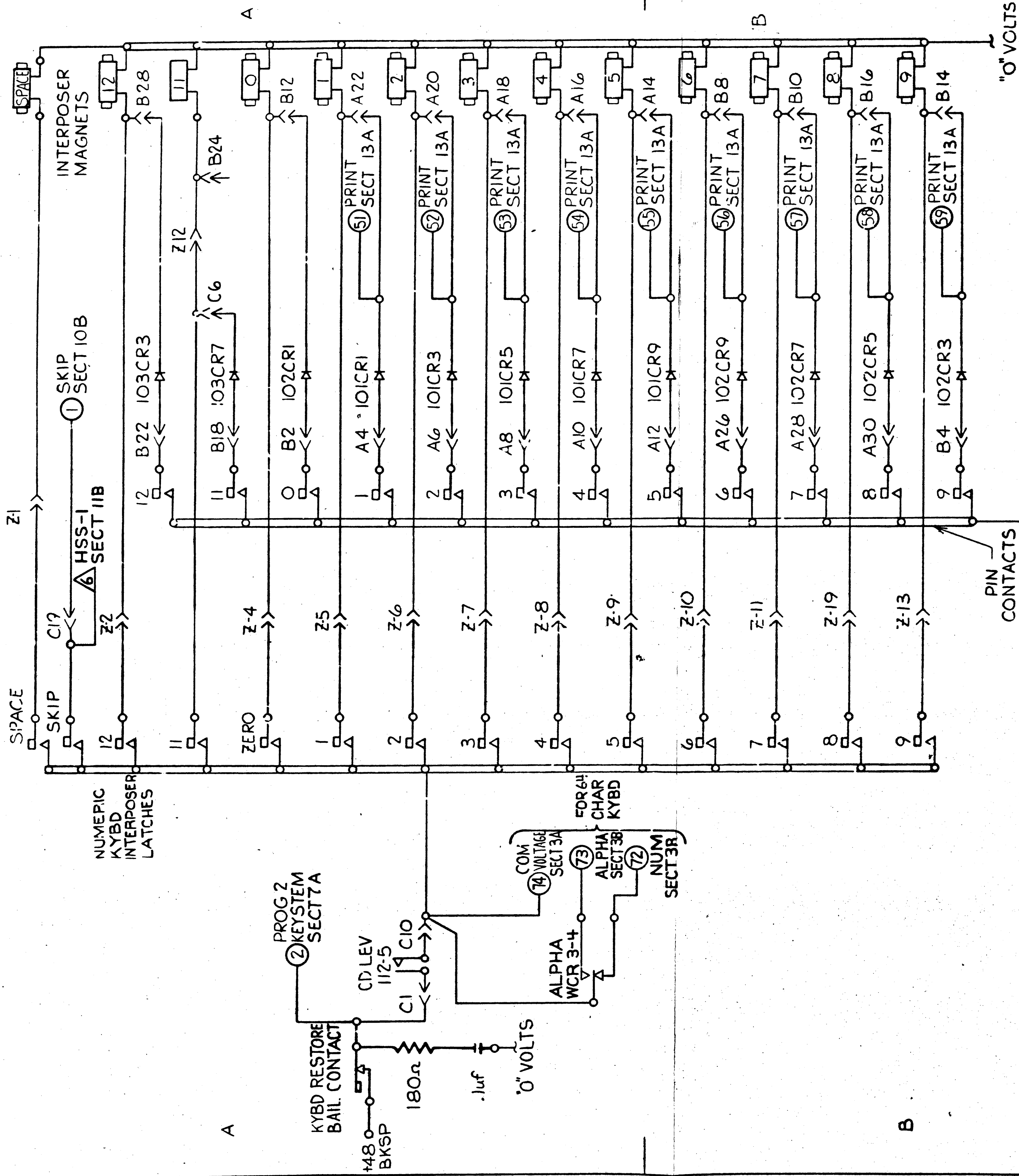
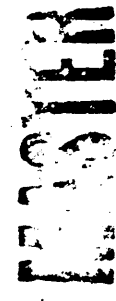
NOTES
XI FOR 115V OPERATION F2 WILL NOT BE USED

INTERNATIONAL BUSINESS MACHINES CORP.	
NAME	SYSTEMS DIAGRAM
MODEL	00.29.01.1
DESIGN	WT 5-6-65
CHECK	LF 5-6-65
APPROV	RLJ 5-6-65

DATE	CHARGE NO.	DATE	CHARGE NO.
7-6-65	209392		
	51-244		

NOTE
X PRINT TO ENG. SPEC. NO.
892391

NUMERIC KEYBOARD AND INTERPOSERS



NOTES
 Z1 POINT TO POINT WIRING FOR
 +4B AND C VOLT NETS SHOWN
 ON REF PAGE

PRINT SECT 13B

INTERNATIONAL BUSINESS MACHINES CORP.	
NAME	SYSTEMS DIAGRAM
DESIGN	002902.1
DETAIL	WT 17-264 MODEL
CHECK	L.F. 10-26-64 DRAW COA 12-2-64
APPRO	W.C. 10-26-64 CHECK 12-2-64

NOTE: X PRINT TO ENG SPEC. NO. 895291

CHANGE NO.

DATE

CHANGE NO.

DATE

CHANGE NO.

DATE

CHANGE NO.

DATE

CHANGE NO.

DATE

CHANGE NO.

DATE

CHANGE NO.

DATE

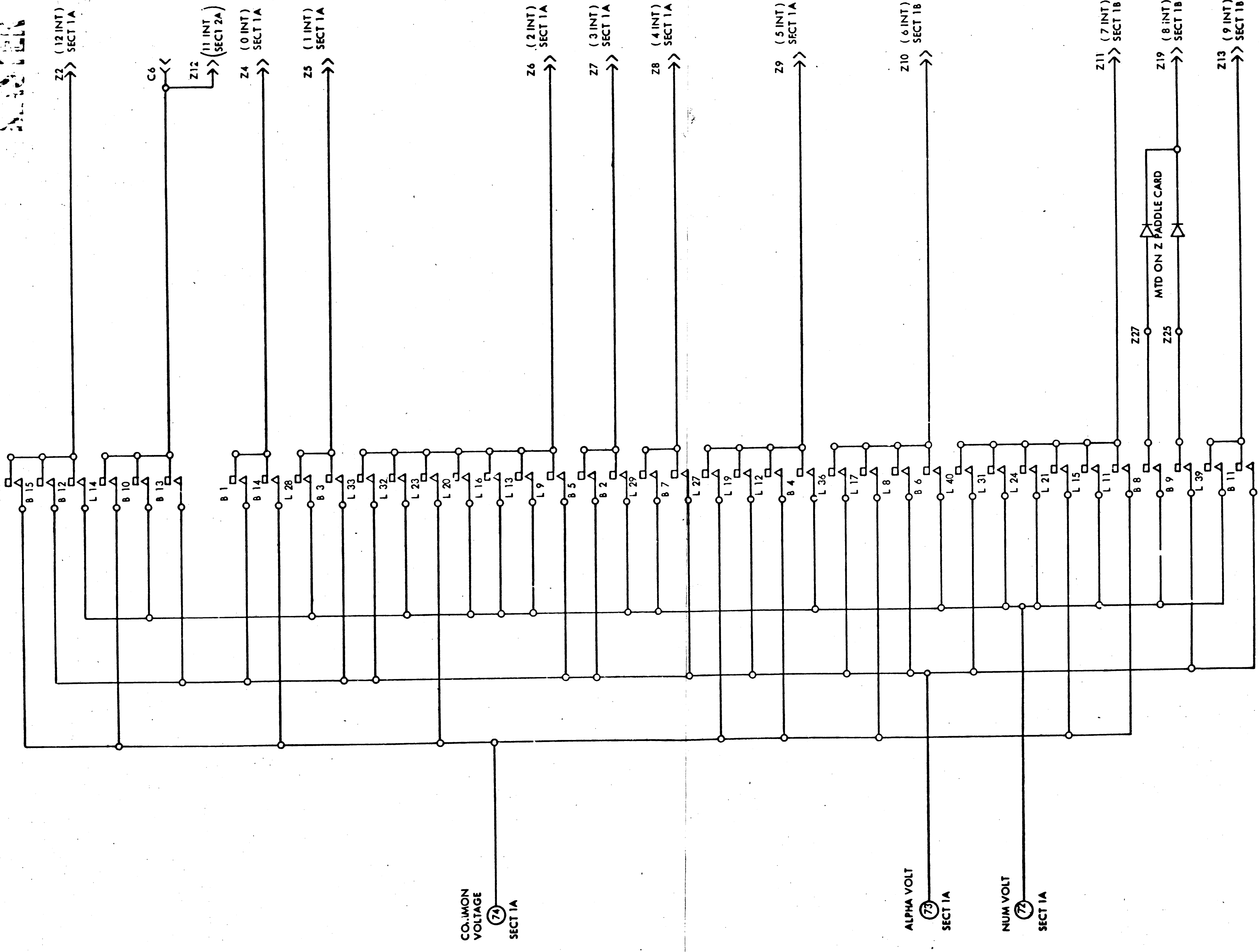
CHANGE NO.

SYSTEM

4

64 CHARACTER KYBD
L 18

3



A

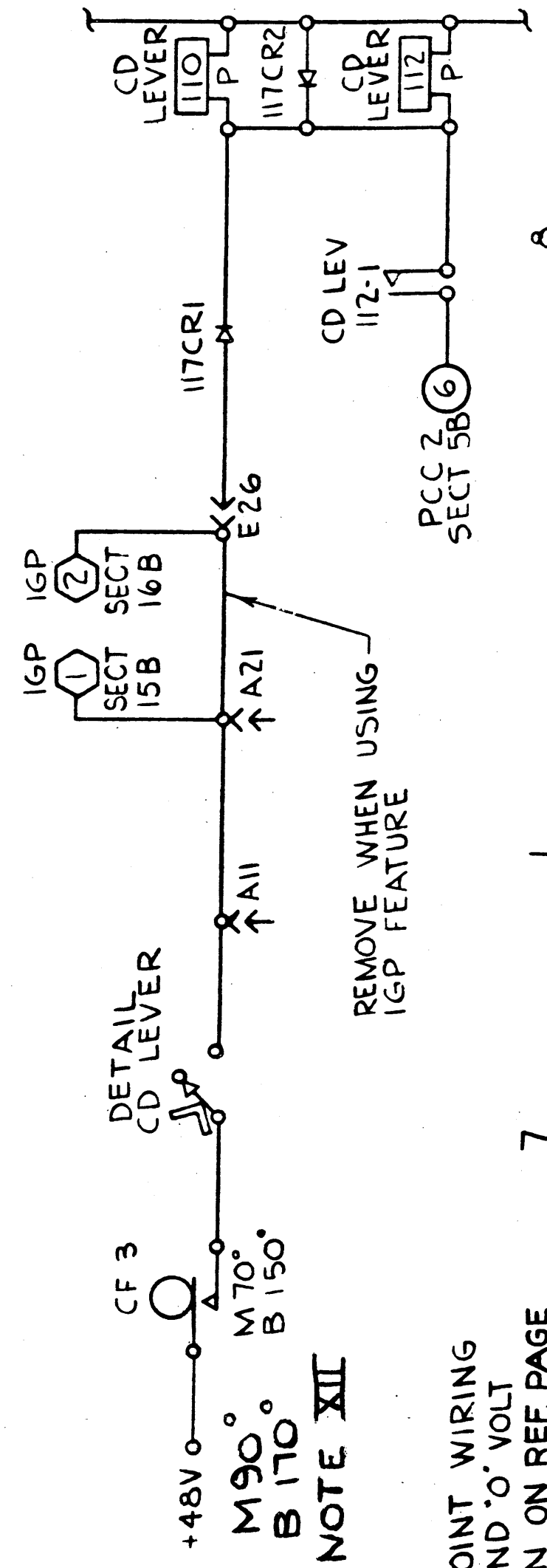
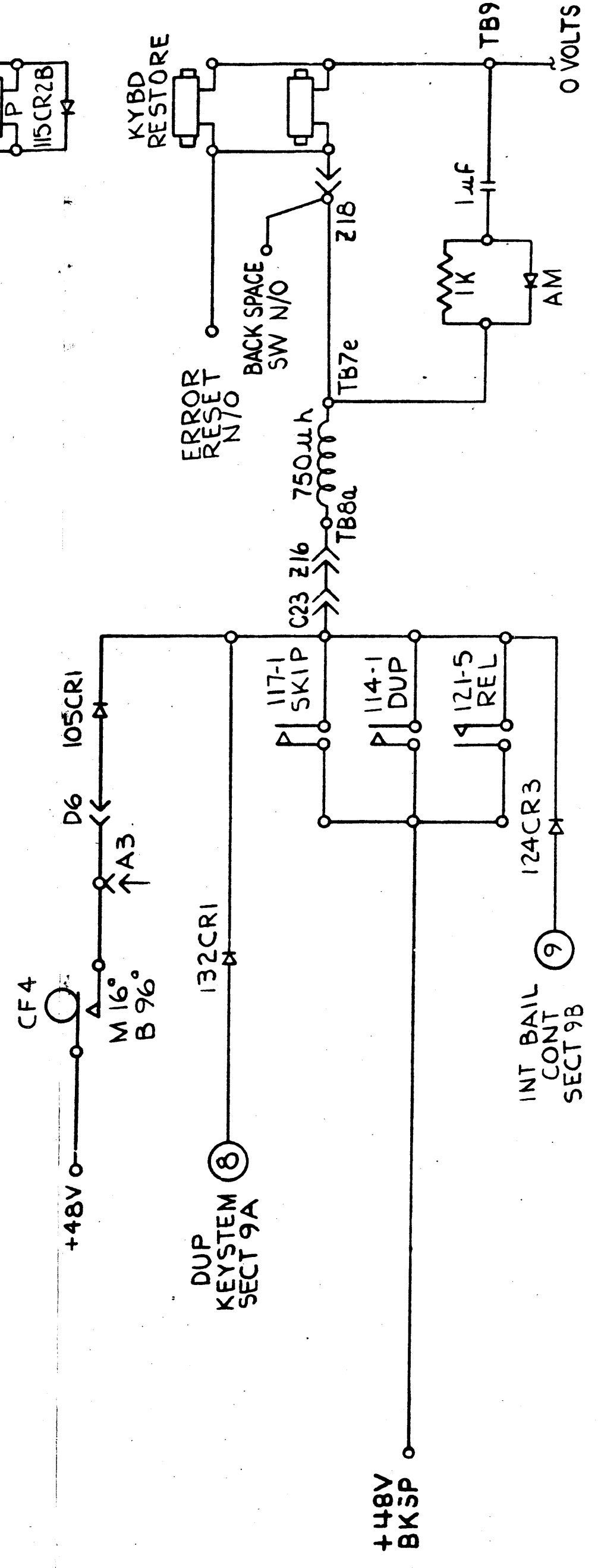
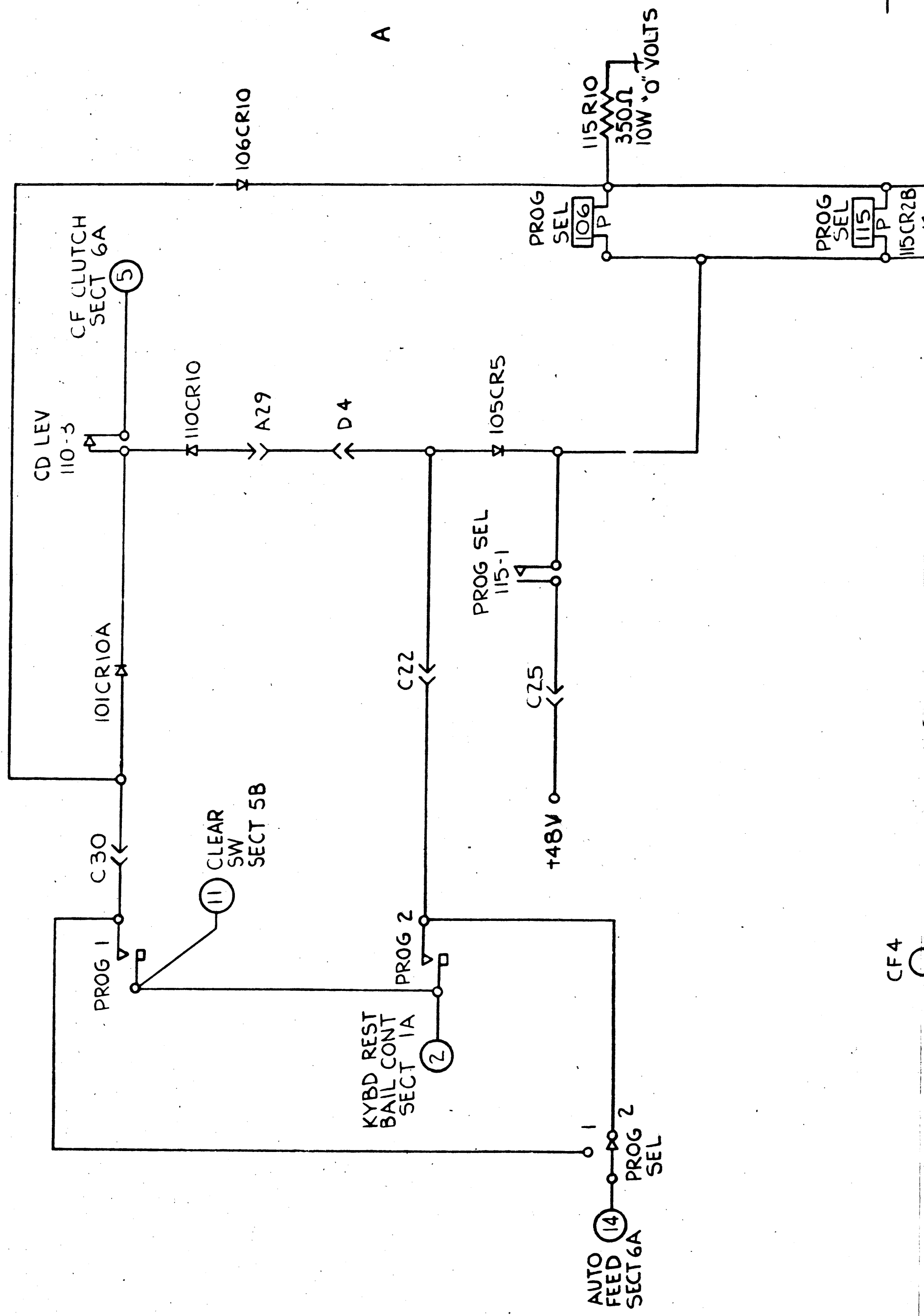
B

3

4

INTERNATIONAL BUSINESS MACHINES CORP.	
NAME	SYSTEMS DIAGRAM
DESIGN	WT 20CT6 4 MODEL
DETAIL	WT 20CT6 4
CHECK	LF 20CT6 4 DRAW ICDA 2-3-65
APPROV	JKC 20CT6 4 CHECK/AEK 12-11-65

DATE	CHARGE NO.	DATE	CHARGE NO.
12-30-64	205199		
2-18-65	205260		
5-3-65	205282A		
28OCT65	205425C		



NOTES
 XI POINT TO POINT WIRING FOR + 48V AND 0 VOLT NETS SHOWN ON REF PAGE
 XII CAM TIMING FOR HSS AND VLCD ONLY

7 8

INTERNATIONAL BUSINESS MACHINES CORP.		DATE	CHANGE NO.	DATE	CHANGE NO.	NOTE
NAME	SYSTEMS DIAGRAM	12-30-64	205199			X PRINT TO ENG. SPEC. NO. 895291
DESIGN	WT 10264	2-19-65	205260			
DETAIL		5-1-65	205282-A			
CHECK	LF 10264	29OCT65	205425C			
APPRO	JXC 10264	CHEK 117-19-65	51-346			

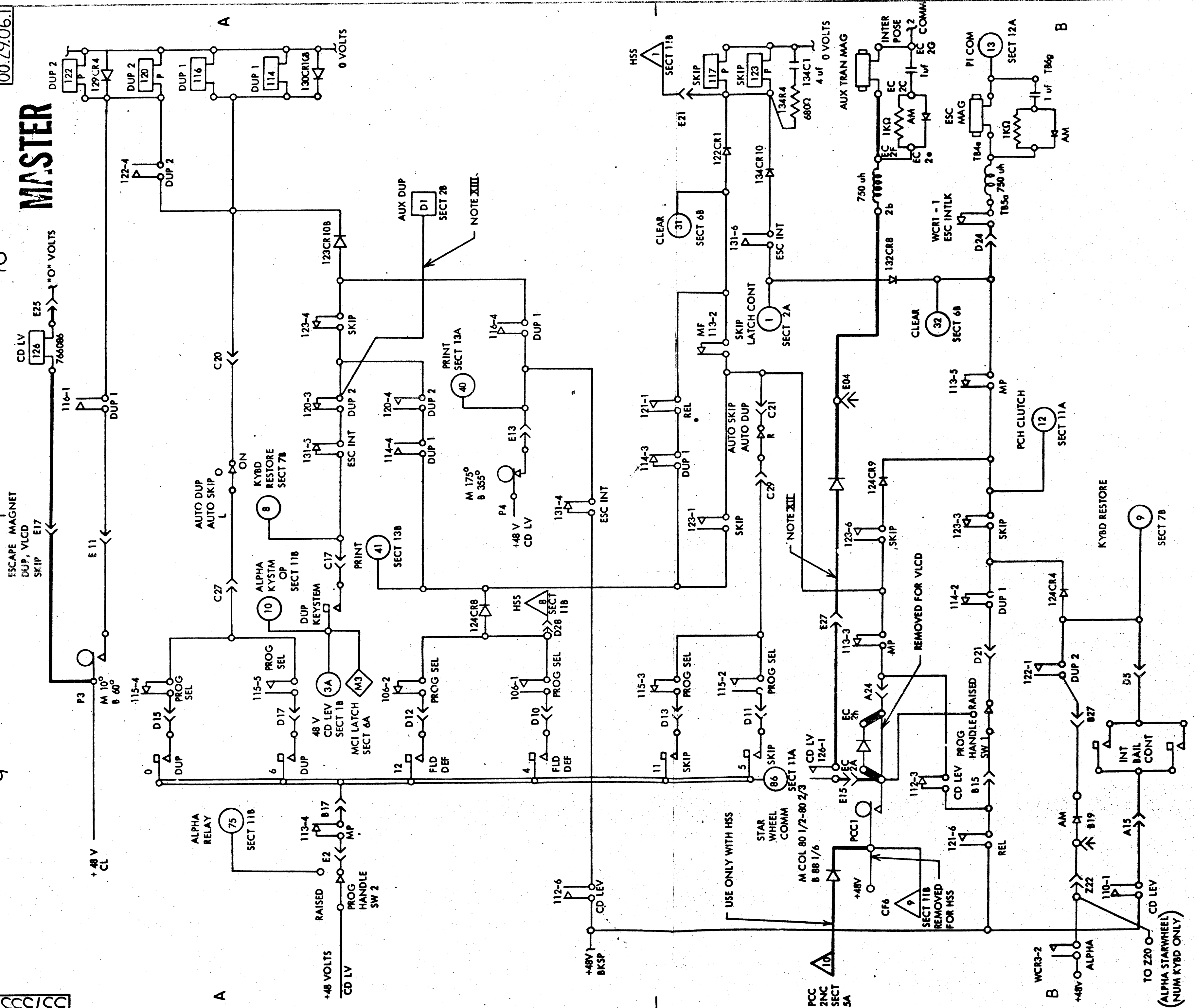
5373557

9

10

00.29.06.1

MASTER



10

NOTES
 XI POINT TO POINT WIRING FOR +48V AND "O" VOLT NETS SHOWN ON REF PAGE
 XII HEAVY LINES REPRESENT FEATURE INFORMATION
 XIII ON "D" LEVEL CARD AUX DUP HOLD CIRCUIT IS YELLOW WIRE

INTERNATIONAL BUSINESS MACHINES CORP.	
NAME	SYSTEMS DIAGRAM
00.29.06.1	
DESIGN WT	ZOC 163 MODEL
DETAIL LF	ZOC 65
CHECK LF	ZOC 65
APPROD	JKC POC 65 DRAW CDAP-4-65 CHENG/AEK 12-11-65

DATE	CHANGE NO.	CHANGE NO.	DATE	CHANGE NO.	NOTE
12-30-64	205199				
2-18-65	205260				
5-3-65	205282A				
28 OCT 65	205425C				

NOTE
 X PRINT TO ENG. SPEC. NO. 895291

DEVELOPMENT NO. 5373557
 00.29.06.1

5373558

11

PUNCH CLUTCH

12

0029071

The diagram illustrates the electrical control system for a punch clutch. It is divided into two main sections, A and B.

Section A: This section shows the primary control circuit. It starts with a +48V C.L. (Common Line) supply. Key components include:

- INT BAIL CONT SECT 10B:** Connected to terminal 113-6.
- M.P. (Master Point):** Terminal 113-6.
- DUP 1:** Terminal 116-2, connected to +48V C.L. and terminal E9.
- DUP 2:** Terminal 122-2.
- ESC INT:** Terminal 131-2.
- ESC ARM CONT:** Terminal 122CR2.
- SKIP:** Terminal 123-5.
- M.P. SECT 5A:** Terminal 131-1.
- ESC INT:** Terminal 131-1.
- WCR 1-4:** A relay assembly connected to terminals E3 and WCR 1-70P.
- WCR 1-70P:** A relay assembly connected to terminal E3.
- ESC INTERLOCK:** Terminal 131.
- 0 VOLTS:** Ground reference.

Section B: This section shows the keyboard interlock circuit. It includes:

- STAR WHEEL COM SECT 9B:** Terminal 7.
- ALPHA KEYS:** Terminal 106-4.
- PROG SEL:** Terminal 106-3.
- NUM MP KEYS:** Terminal 116-3.
- DUP 1:** Terminal 116-3.
- ALPHA KEYS:** Terminal 106-3.
- PROG SEL:** Terminal 106-3.
- PROG HANDLE SW2 RAISED SECT 9A:** Terminal 1.
- +148 CD LEV (DUP KEYSYM) SECT 9A:** Terminal 9.
- ALPHA KEYSYM:** Terminal 9.
- 470Ω Resistor:** Connected to terminal C8.
- NOTE XII .2UF:** A capacitor connected to terminal C8.
- 0 VOLTS:** Ground reference.

NOTES
 XI POINT TO POINT WIRING FOR +48V AND 0 VOLT NETS SHOWN ON REF PAGE
 XII RC ON WCR3-10P

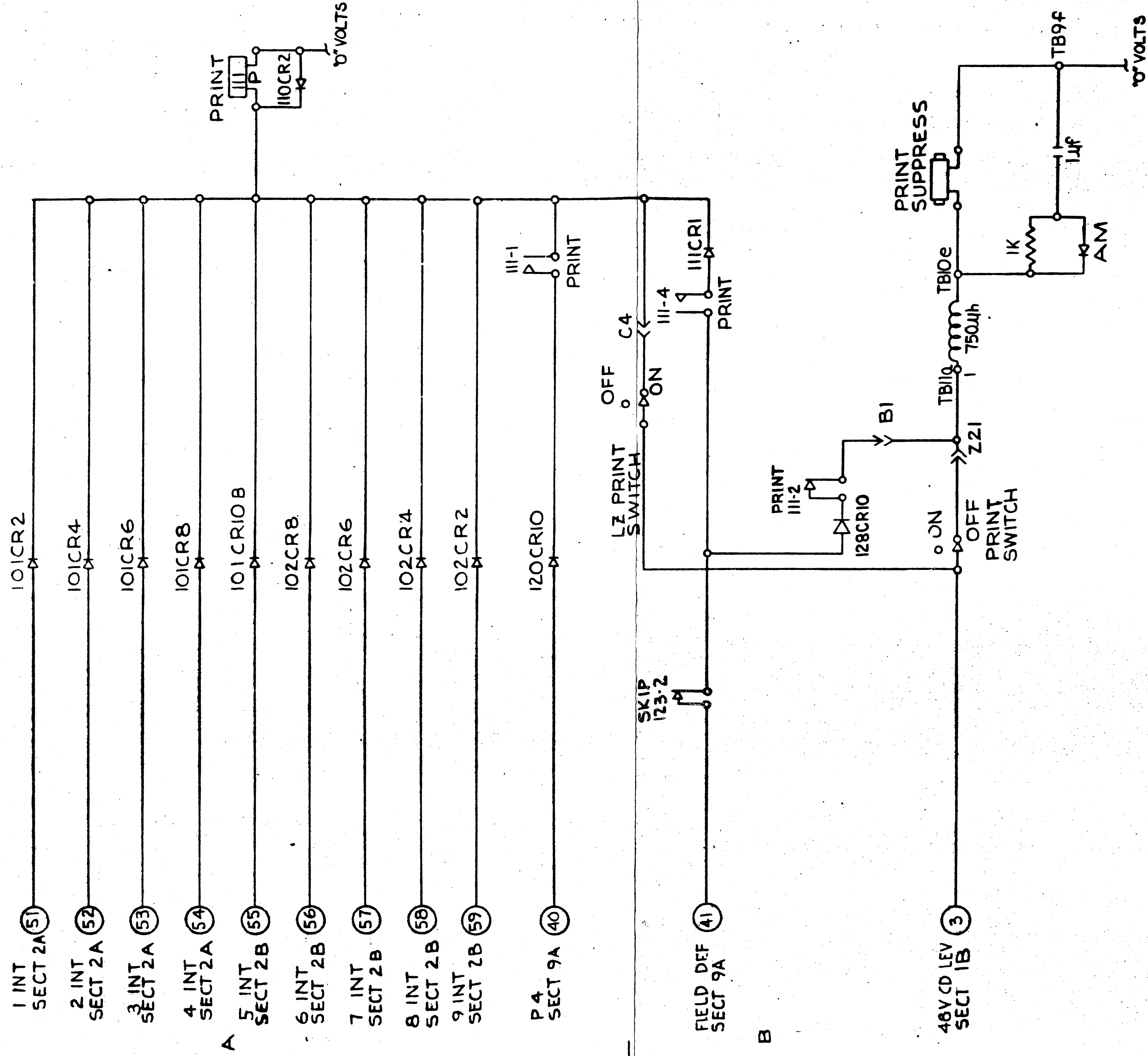
11

12

INTERNATIONAL BUSINESS MACHINES CORP.		DATE	CHARGE NO.	DATE	CHARGE NO.	DATE	CHARGE NO.	NOTE	DEVELOPMENT NO.
NAME	SYSTEMS DIAGRAM	23064	205199					X PRINT TO ENG. SPEC. NO.	5373558
DESIGN	0029071	21865	205260					895291	
DETAIL	10-1-64	5-1-65	205282-A						
CHECK	10-2-64	12-1-64	280CT65	205425C					
APPROV	10-2-64	12-9-74	11 APR 66	205632					0029071

PRINT FEATURE

MASTER



NOTES
 XI POINT TO POINT WIRING FOR 48V AND 0V VOLT NETS SHOWN ON REF PAGE

INTERNATIONAL BUSINESS MACHINES CORP.			
NAME	SYSTEMS DIAGRAM	DATE	CHARGE NO.
	00.29.08.1	12-30-64	205199
DESIGN	WT 102-64	2-18-65	205260
DETAIL		5-1-65	205282-A
CHECK	LF 102-64	28OCT65	205425 C
APPROV	JK 102-64	CHEG	HC B 12-17-64

DEVELOPMENT NO.	5373559
NOTE	X PRINT TO ENG. DESK. NO. 895291
DATE	00.29.08.1

SIMILAR TO 5393430

