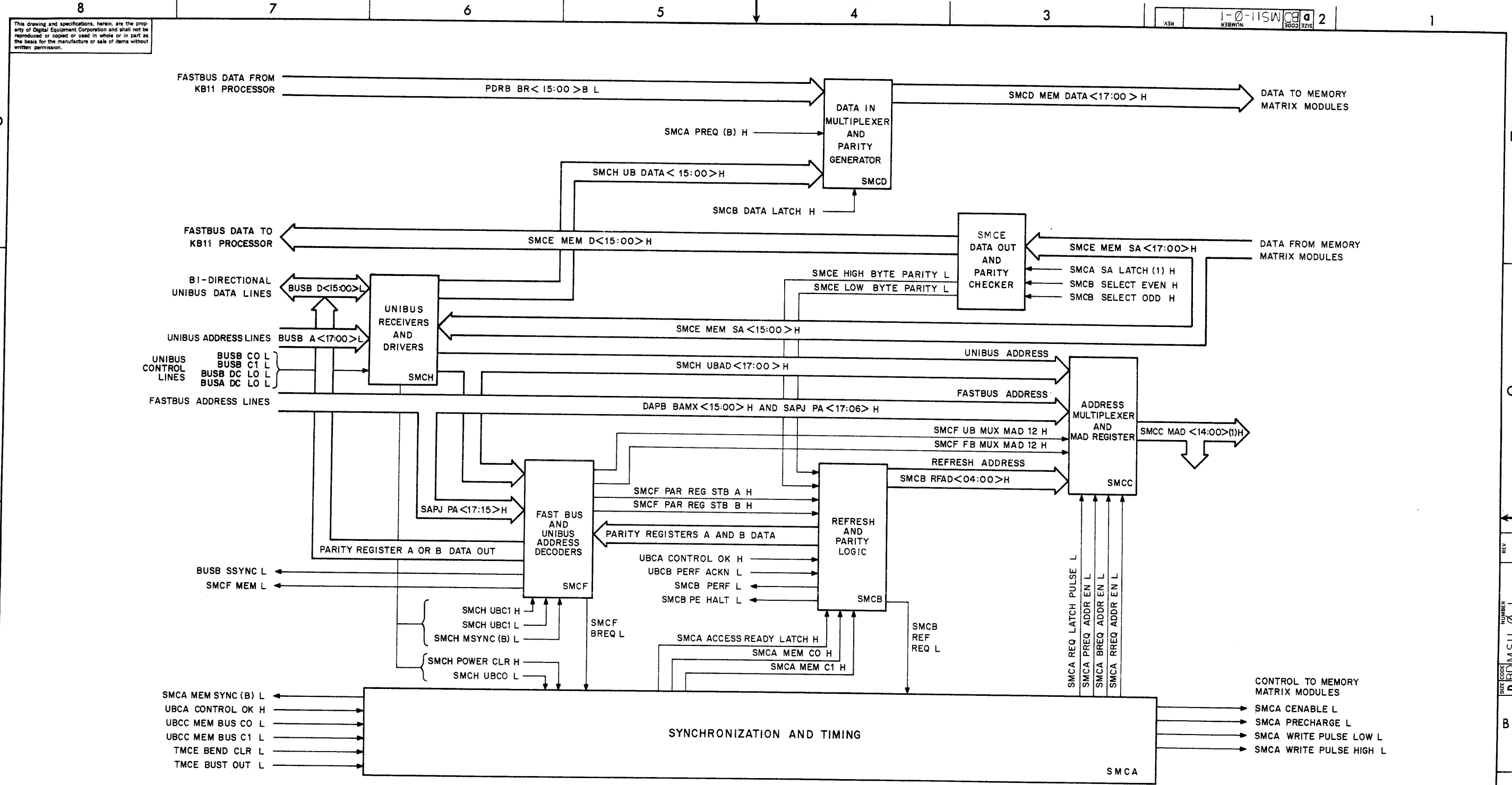


MS11-B
MOS memory
engineering drawings

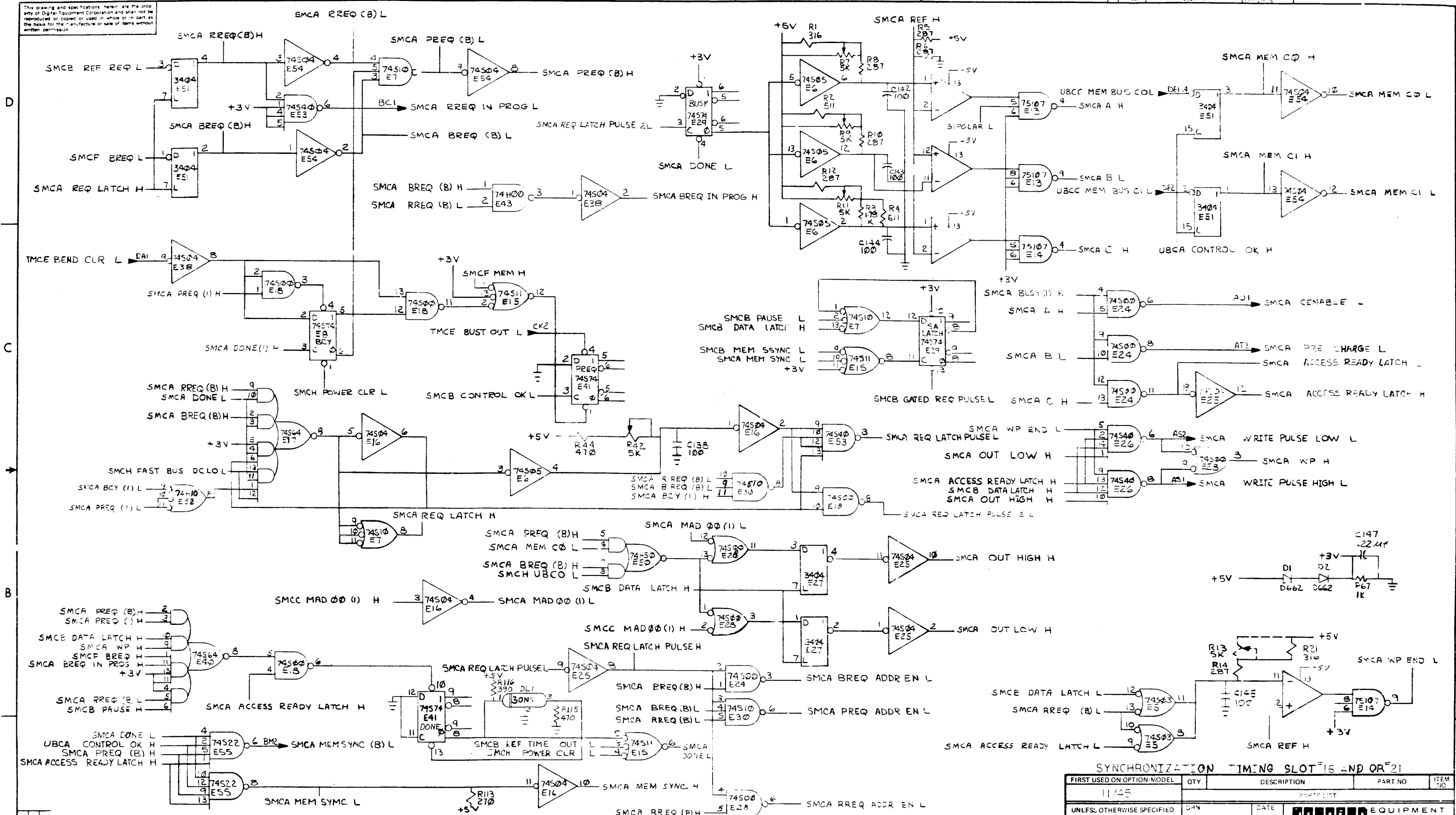


This drawing and specifications, herein, are the property of Digital Equipment Corporation and shall not be reproduced or copied or used in whole or in part as the basis for the manufacture or sale of items without written permission.

REV.	
CHG	
CHK	

FIRST USED ON OPTION/MODEL	QTY.	DESCRIPTION	PART NO.	ITEM NO.
11/45				
PARTS LIST				
UNLESS OTHERWISE SPECIFIED DIMENSION IN INCHES. TOLERANCES		DATE 4/12/72		
DECIMALS	ANGLES	DATE 4/28/72		
.XXX = .005	± 0° 30'	DATE 4/28/72	TITLE BLOCK DIAGRAM	
.XX = .02		DATE 4/28/72		
.X = .1		DATE 4/28/72	REMOVE BURRS AND BREAK SHARP CORNERS SURFACE QUALITY	
		DATE 4/28/72		
MATERIAL	NEXT HIGHER ASSY.		SIZE CODE	NUMBER
			D	BD MS11-0-1
FINISH	SCALE	SHEET	DIST.	REV.
		1 OF 1		

This drawing and specifications herein are the property of Digital Equipment Corporation and shall not be reproduced or copied or used in whole or in part as the basis for the manufacture or sale of items without written permission.



SYNCHRONIZATION TIMING SLOT 16 AND OR 21

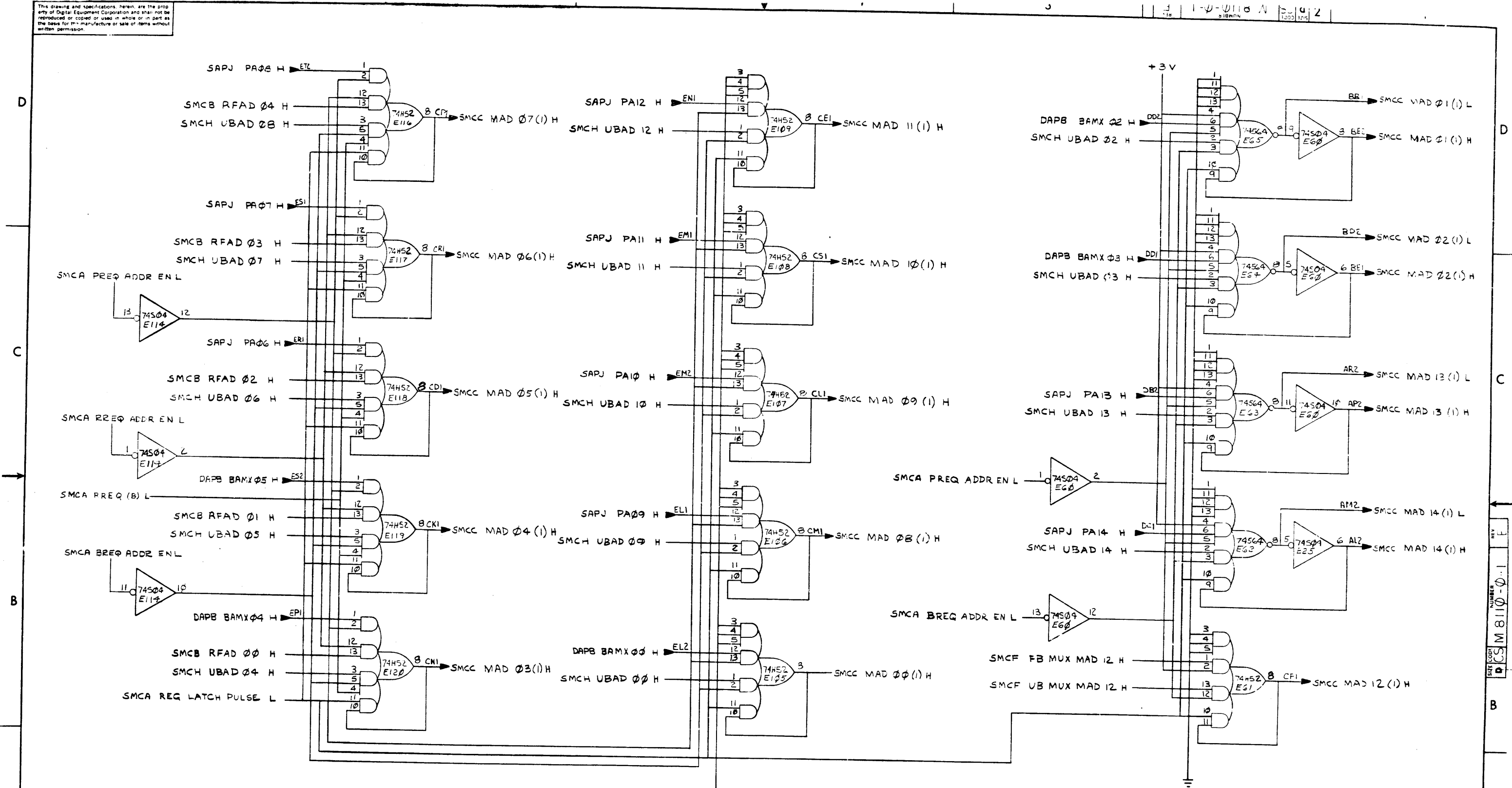
FIRST USED ON OPTION MODEL	QTY.	DESCRIPTION	PART NO.	ITEM NO.
11/45				
UNLESS OTHERWISE SPECIFIED DIMENSION IN INCHES TOLERANCES				
DECIMALS	ANGLES	DATE	PARTS LIST	
XXX - .005	10° ± 30'	DATE	TITLE	
XX - .02		DATE	SEMI CONDUCTOR	
X - .1		DATE	MEMORY CONTROL	
REMOVE BURRS AND BREAK SHARP CORNERS SURFACE QUALITY		DATE	S.C.A.	
MATERIAL	NEXT HIGHER ASSY	DATE	SIZE CODE	NUMBER
			D	M 8110-0-1
FINISH	SCALE	DATE	SHEET	REV
			2 OF 9	

REV	
CHK	
CHANGE NO	
EVISIONS	

REV. 1
M 8110-0-1
DCC
D
B
A

This drawing and specifications herein are the property of Digital Equipment Corporation and shall not be reproduced or copied or used in whole or in part as the basis for the manufacture or sale of items without written permission.

11-0-0110 A 2



ADDRESS MULTIPLEXER SLOT 16 AND OR21

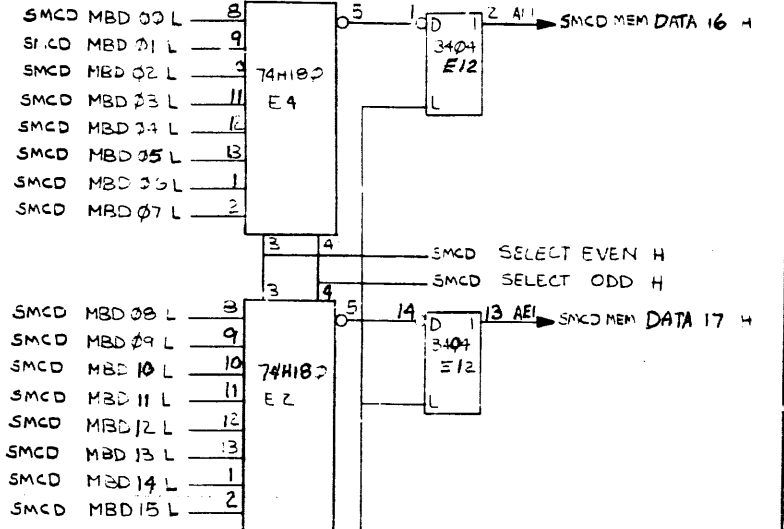
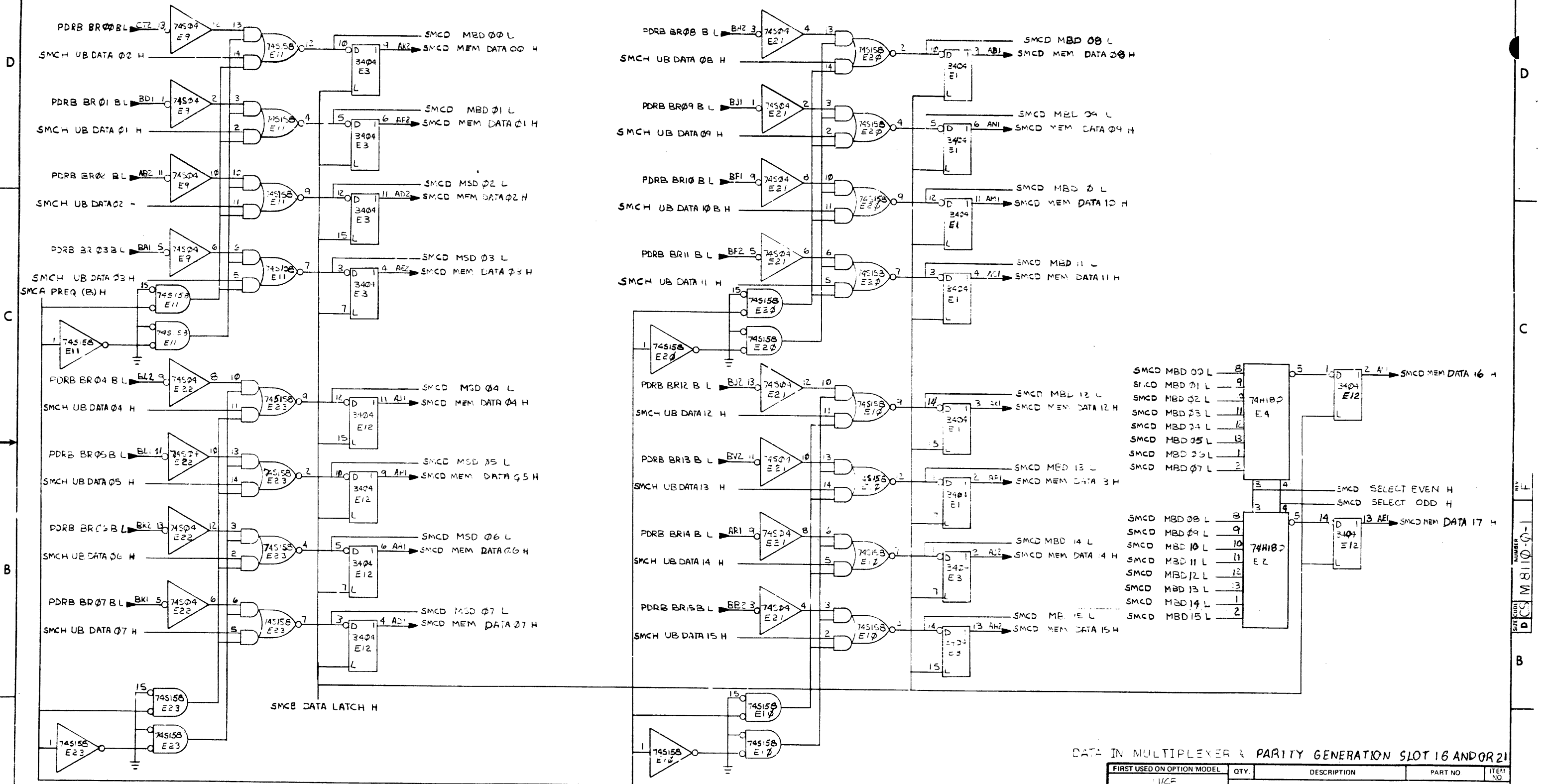
REV	
CHANGE NO	
REVISIONS	
CHK	

FIRST USED ON OPTION/MODEL	QTY.	DESCRIPTION	PART NO.	ITEM NO.
11/45				
UNLESS OTHERWISE SPECIFIED DIMENSION IN INCHES. TOLERANCES				
DECIMALS	ANGLES	DRN	DATE	digital EQUIPMENT CORPORATION <small>MAYNARD MASSACHUSETTS</small>
.xxx - .005	±0° 30'	CHK'D	DATE	
.xx - .02		ENG.	DATE	
.x - .1		PROJ. ENG.	DATE	
		PROD.	DATE	
REMOVE BURRS AND BREAK SHARP CORNERS SURFACE QUALITY				
MATERIAL		NEXT HIGHER ASSY.		
FINISH		SCALE		
		SHEET OF 3		
		DIST		

TITLE
SEMI CONDUCTOR
MEMORY CONTROL
(SMCC)

SIZE CO. E NUMBER
DCS M8110-0-1 REV
E

This drawing and specifications herein are the property of Digital Equipment Corporation and shall not be reproduced or used in whole or in part as the basis for the manufacture or sale of items without written permission.

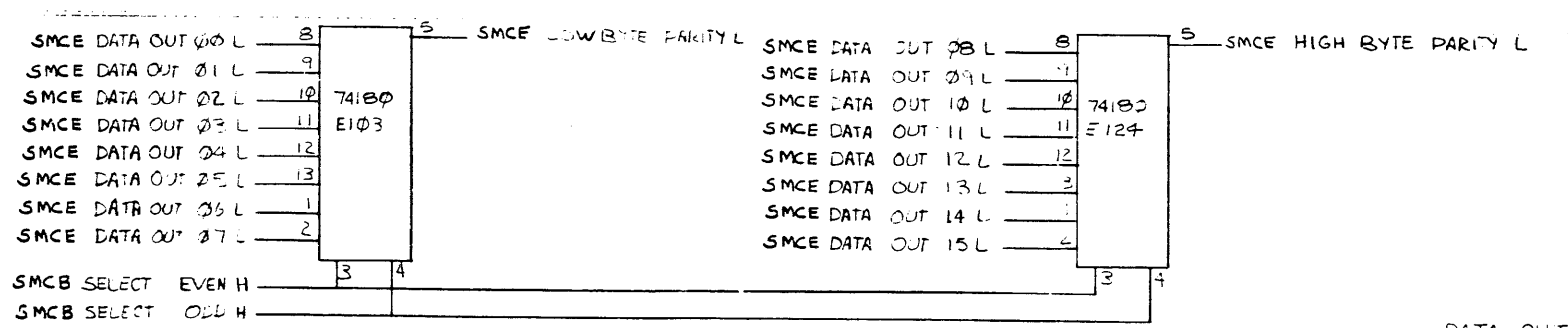
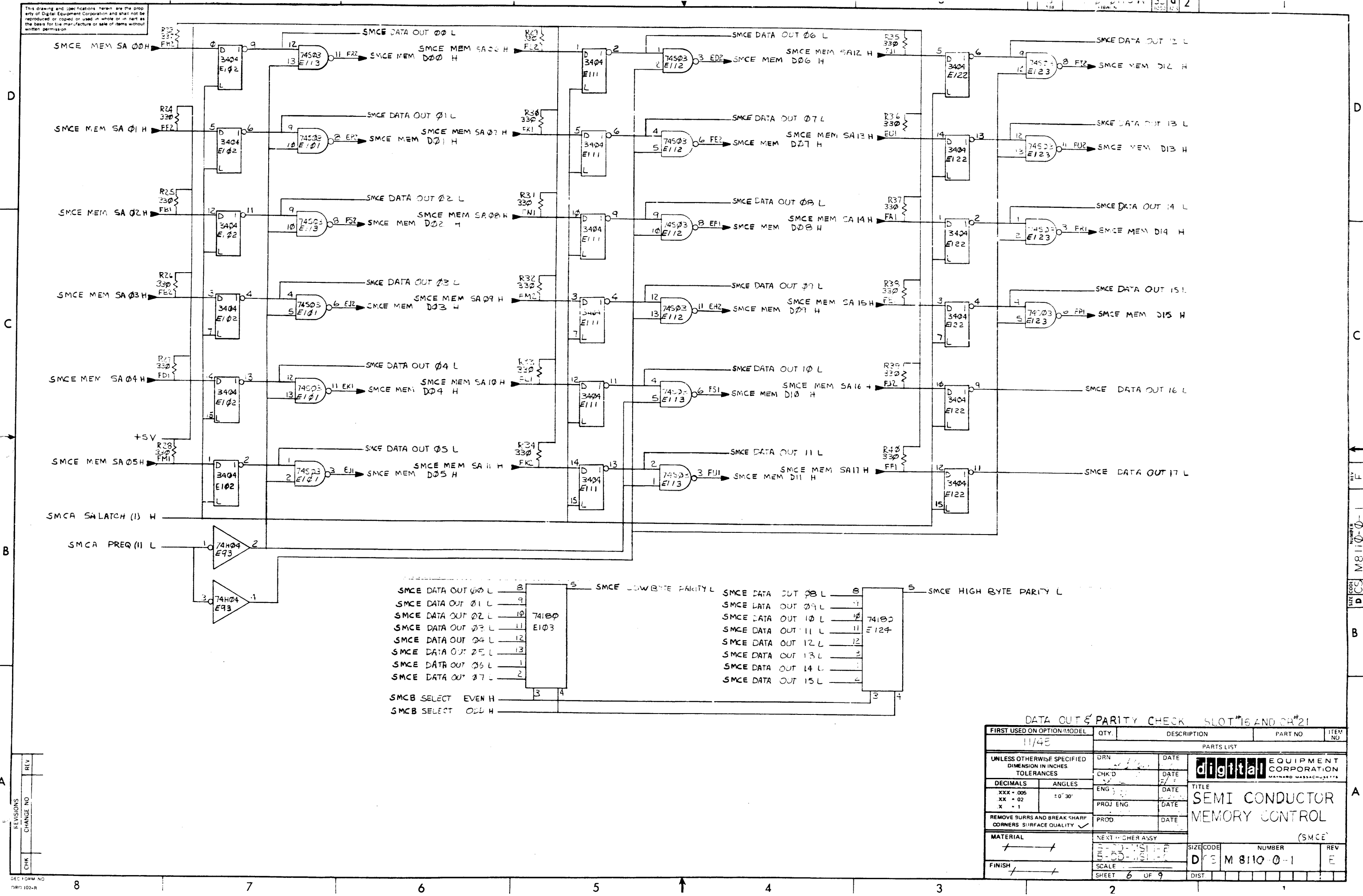


DATA IN MULTIPLEXER & PARITY GENERATION SLOT 16 AND/OR 21

FIRST USED ON OPTION MODEL	QTY.	DESCRIPTION	PART NO.	ITEM NO.
1145				
PARTS LIST				
UNLESS OTHERWISE SPECIFIED DIMENSION IN INCHES TOLERANCES	DRN	DATE	digital EQUIPMENT CORPORATION MAYNARD, MASSACHUSETTS	
DECIMALS	CHK'D	DATE		
ANGLES	ENG	DATE	TITLE SEMI CONDUCTOR MEMORY CONTROL	
XX - .005 XX - .02 X - .1	PROJ ENG.	DATE		
REMOVE BURRS AND BREAK SHARP CORNERS SURFACE QUALITY	PROD	DATE	MATERIAL NEXT HIGHER ASSY 3-DD-NS11-E 3-DB-NS11-C	
FINISH	SCALE	SHEET 5 OF 9	SIZE CODE DCS	NUMBER M 8110 0-1
				REV E

REV	CHG	NO

This drawing and specifications herein are the property of Digital Equipment Corporation and shall not be reproduced or copied or used in whole or in part as the basis for the manufacture or sale of items without written permission.

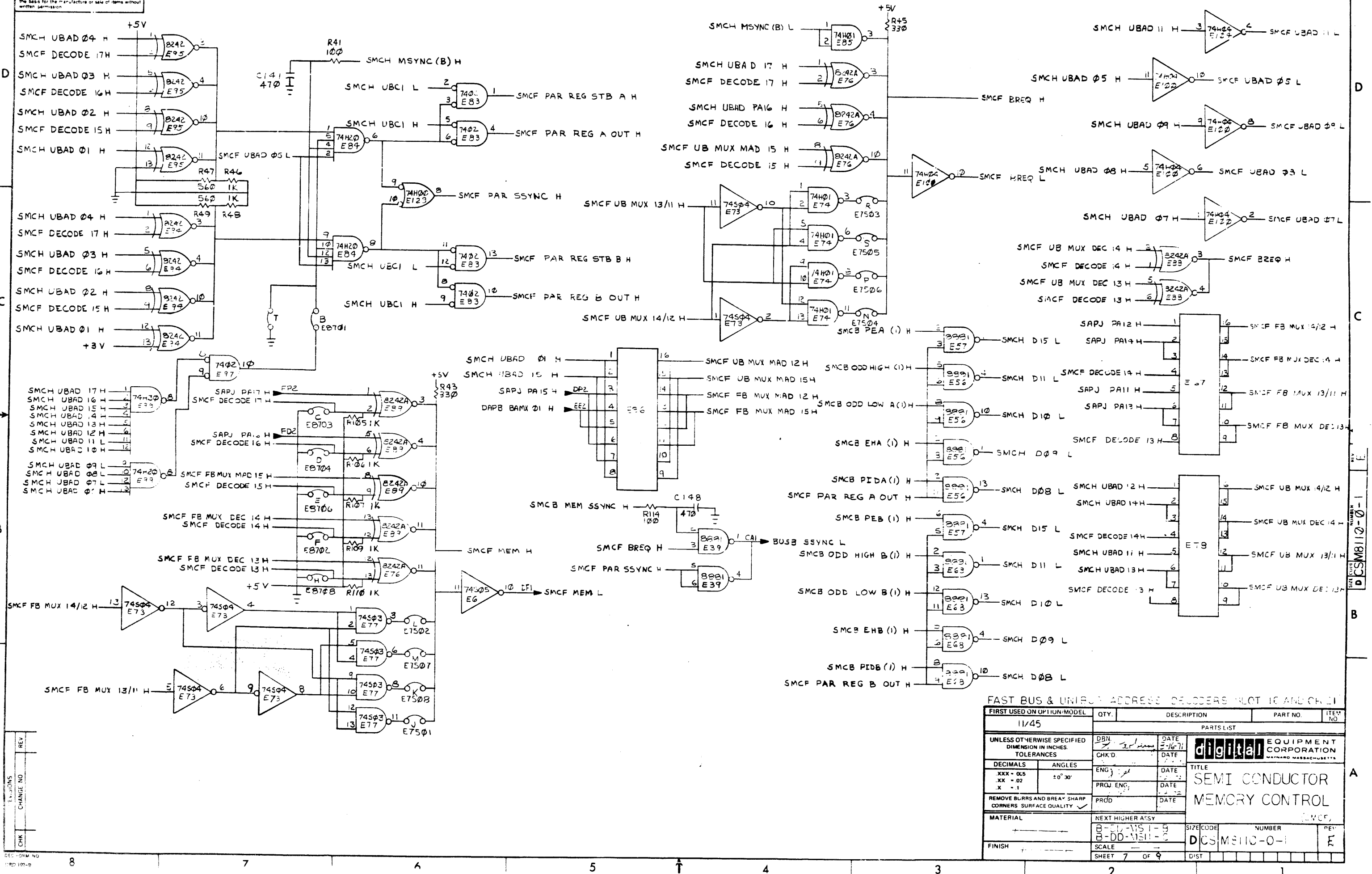


DATA OUT & PARITY CHECK SLOT #16 AND CR #21

FIRST USED ON OPTION/MODEL	QTY.	DESCRIPTION	PART NO.	ITEM NO.
11/48				
PARTS LIST				
UNLESS OTHERWISE SPECIFIED DIMENSION IN INCHES TOLERANCES	DRN	DATE	 TITLE SEMI CONDUCTOR MEMORY CONTROL (SMCE)	
DECIMALS	CHK'D	DATE		
ANGLES	ENG	DATE		
xxx - 005 xx - 02 x - 1	PROJ ENG	DATE		
REMOVE BURRS AND BREAK SHARP CORNERS SURFACE QUALITY ✓	PROD	DATE		
MATERIAL	NEXT HIGHER ASSY			
FINISH	SCALE	SIZE CODE	NUMBER	REV
		D 3 M 8110-0-1		E
	SHEET 6 OF 9	DIST		

REV	CHANGE NO

This drawing and specifications herein are the property of Digital Equipment Corporation and shall not be reproduced or copied in whole or in part as the basis for the manufacture or sale of items without written permission.

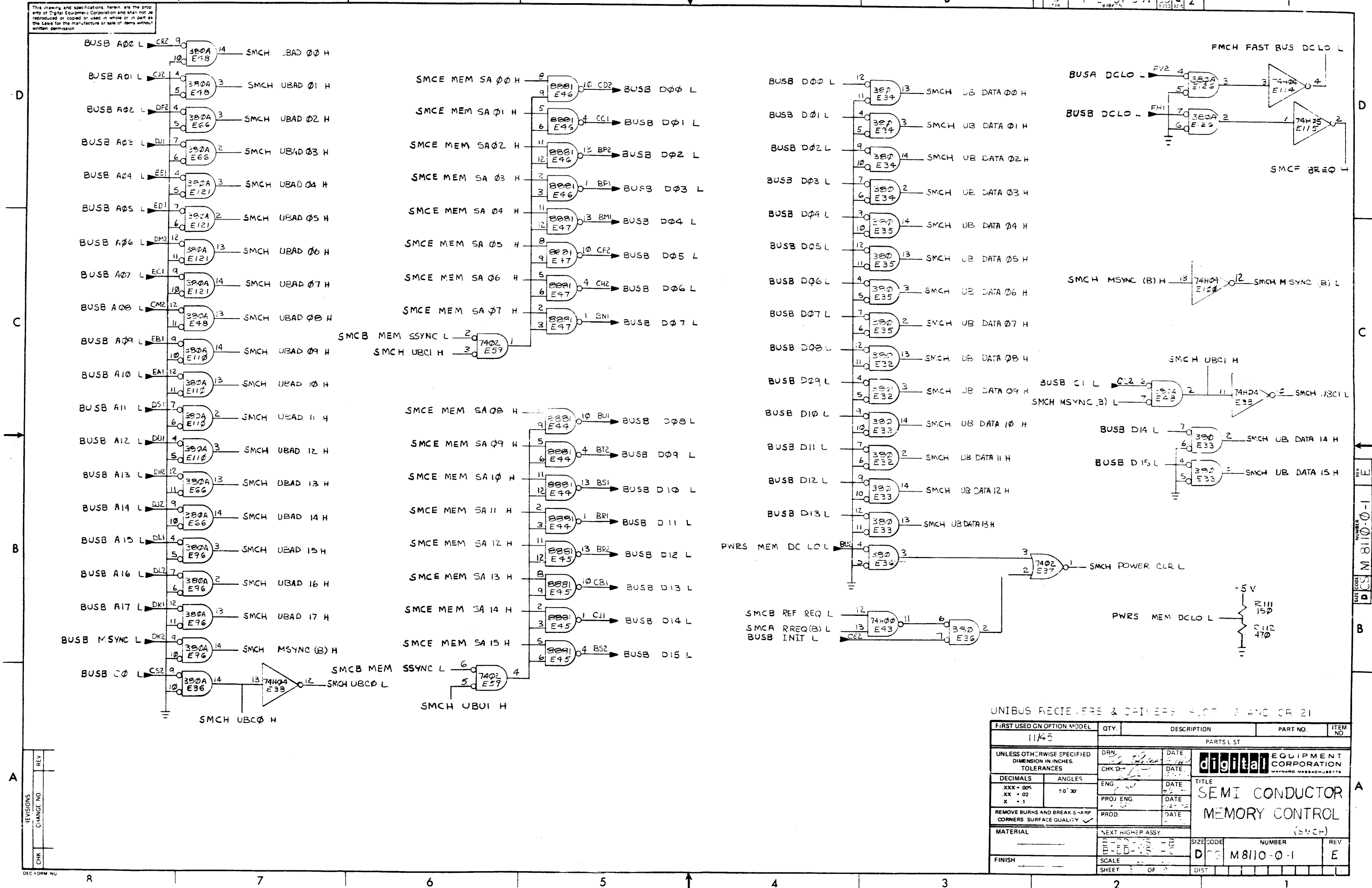


FAST BUS & UNIBUS ADDRESS DECODERS (NOT TO SCALE)				
FIRST USED ON OPTION/MODEL	QTY.	DESCRIPTION	PART NO.	ITEM NO.
11/45				
PARTS LIST				
UNLESS OTHERWISE SPECIFIED DIMENSION IN INCHES TOLERANCES				
DECIMALS	ANGLES	DATE	TITLE	
XXX - 005	±0° 30'	3-16-71	SEMI CONDUCTOR	
.XX - 02			MEMORY CONTROL	
.X - 1				
REMOVE BURRS AND BREAK SHARP CORNERS SURFACE QUALITY				
MATERIAL		NEXT HIGHER ASSY	SIZE CODE	NUMBER
		B-00-MST-9		
		B-DD-MST-0		
FINISH		SCALE	DCS MEMC-0-1	
		SHEET 7 OF 9	REV E	

CHK	CHANGE NO	REV

SIZE CODE NUMBER
 DCS MEMC-0-1

This drawing and specifications, herein, are the property of Digital Equipment Corporation and shall not be reproduced or copied or used in whole or in part as the basis for the manufacture or sale of items without written permission.



UNIBUS RECEIVERS & DRIVERS SLOT 3 AND CR 21

FIRST USED ON OPTION MODEL	QTY.	DESCRIPTION	PART NO.	ITEM NO.
11145		PARTS LIST		
UNLESS OTHERWISE SPECIFIED DIMENSION IN INCHES. TOLERANCES		DRN. DATE	 digital EQUIPMENT CORPORATION MAYNARD MASSACHUSETTS	
DECIMALS		CHK'D. DATE		
ANGLES		ENG. DATE		
.XXX = 005		PROJ. ENG. DATE		
.XX = 02		PROD. DATE	TITLE	
X = 1			SEMI CONDUCTOR MEMORY CONTROL (SMCH)	
REMOVE BURRS AND BREAK S-APP CORNERS SURFACE QUALITY			MATERIAL	
			NEXT HIGHER ASSY.	
			SCALE	
			FINISH	
			SIZE CODE	
			NUMBER	
			REV	
			DGS M8110-0-1 E	
			SHEET OF	
			DIST	

REVISIONS

NO.	DATE	DESCRIPTION
1		
2		
3		
4		
5		
6		
7		
8		

A TO SET UP MEMORY CONTROL FOR BIPOLAR MEMORY

1) CUT JUMPERS IN THE FOLLOWING LOCATIONS:

E6702	E7802	E8603
E6704	E7804	E8604
E6706	E7806	E8607
E6708	E7808	E8608

2) DECODE ADDRESS BITS 17-13 BY CUTTING THE FOLLOWING JUMPERS FOR A ONE AND LEAVING IN JUMPERS FOR A ZERO.

ADDRESS BIT	JUMPER	LOCATION
17	C	E8703
16	D	E8704
15	E	E8706
14	F	E8702
13	H	E8708

3) DECODE ADDRESS BITS 11 AND 12 FOR THE FAST BUS BY CUTTING THE JUMPERS FOR THE ADDRESS COMBINATION WHERE MEMORY EXISTS.

12	11	JUMPER	LOCATION
0	0	J	E7501
0	1	K	E7508
1	0	L	E7502
1	1	M	E7507

4) DECODE ADDRESS BITS 11 AND 12 FOR THE UNIBUS BY CUTTING THE JUMPERS FOR THE ADDRESS COMBINATION WHERE MEMORY EXISTS.

12	11	JUMPER	LOCATION
0	0	N	E7504
0	1	P	E7506
1	0	R	E7503
1	1	S	E7505

5) FOR A PARITY CONTROL CUT JUMPER T LOCATED UNDER PIN 2 OF E85.

6) FOR NON-PARITY CONTROL CUT JUMPER B LOCATED AT E8701.

7) CUT THE FOLLOWING RESISTORS OUT:

R1
R2
R12
R3

8) TIMING ADJUSTMENT.
A) SYNC PROBE 1
B) ALL MEASUREMENTS AT THE 1.5V POINTS OF LOW GOING EDGES UNLESS OTHERWISE NOTED.

TO ADJUST	PROBE 1	PROBE 2	ADJUST	FOR
ADDRESS SET-UP	E17 PIN 8	E24 PIN 8	R42	85 NS
PRE-CHARGE	E24 PIN 8*		R9	60 NS
ACCESS TIME	E24 PIN 8	E25 PIN 12**	R11	60 NS

* ADJUST WIDTH OF PULSE.
** FROM LOW GOING EDGE OF E24 PIN 8 TO HIGH GOING EDGE OF E25 PIN 12.

REV	
CHG	
CHK	
REVISIONS	
CHANGE NO	
NO	

B TO SET UP MEMORY CONTROL FOR MOS MEMORY

1) CUT JUMPERS IN THE FOLLOWING LOCATIONS:

E8701	E7801	E8603
E8703	E7803	E8604
E8705	E7805	E8607
E8707	E7807	E8608

E 8705 (JUMPER A)

2) DECODE ADDRESS BITS 17-15 BY CUTTING THE FOLLOWING JUMPERS FOR A ONE AND LEAVING IN JUMPERS FOR A ZERO.

ADDRESS BIT	JUMPER	LOCATION
17	C	E8703
16	D	E8704
15	E	E8706

3) DECODE ADDRESS BITS 13 AND 14 FOR THE FAST BUS BY CUTTING THE JUMPERS FOR THE ADDRESS COMBINATION WHERE MEMORY EXISTS.

14	13	JUMPER	LOCATION
0	0	J	E7501
0	1	K	E7508
1	0	L	E7502
1	1	M	E7507

4) DECODE ADDRESS BITS 13 AND 14 FOR THE UNIBUS BY CUTTING THE JUMPERS FOR THE ADDRESS COMBINATION WHERE MEMORY EXISTS.

14	13	JUMPER	LOCATION
0	0	N	E7504
0	1	P	E7506
1	0	R	E7503
1	1	S	E7505

5) FOR A PARITY CONTROL CUT JUMPER T LOCATED UNDER PIN 2 OF E85.

6) FOR NON-PARITY CONTROL CUT JUMPER B LOCATED AT E8701.

7) CUT THE FOLLOWING RESISTORS OUT:

R1
R2
R12
R4

8) TIMING ADJUSTMENT.
A) SYNC PROBE 1
B) ALL MEASUREMENTS AT THE 1.5V POINTS OF LOW GOING EDGES UNLESS OTHERWISE NOTED.

TO ADJUST	PROBE 1	PROBE 2	ADJUST	FOR
ADDRESS SET-UP	E17 PIN 8	E24 PIN 8	R42	85 NS
ENABLE	E24 PIN 8	E24 PIN 6	R7	70 NS
PRE-CHARGE	*E24 PIN 8		R9	90 NS
ACCESS TIME	E24 PIN 8	E16 PIN 12	R11	200 NS

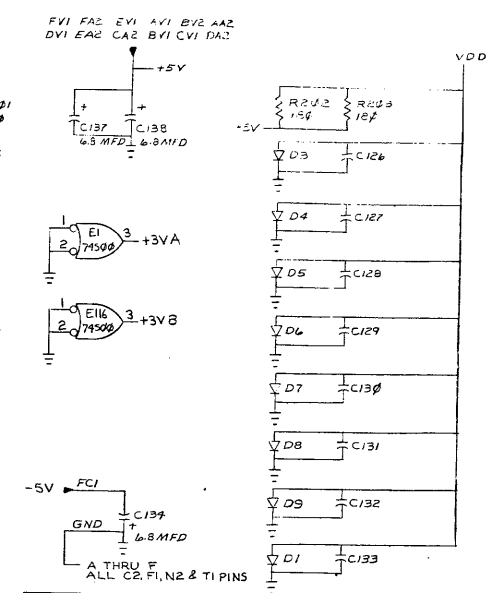
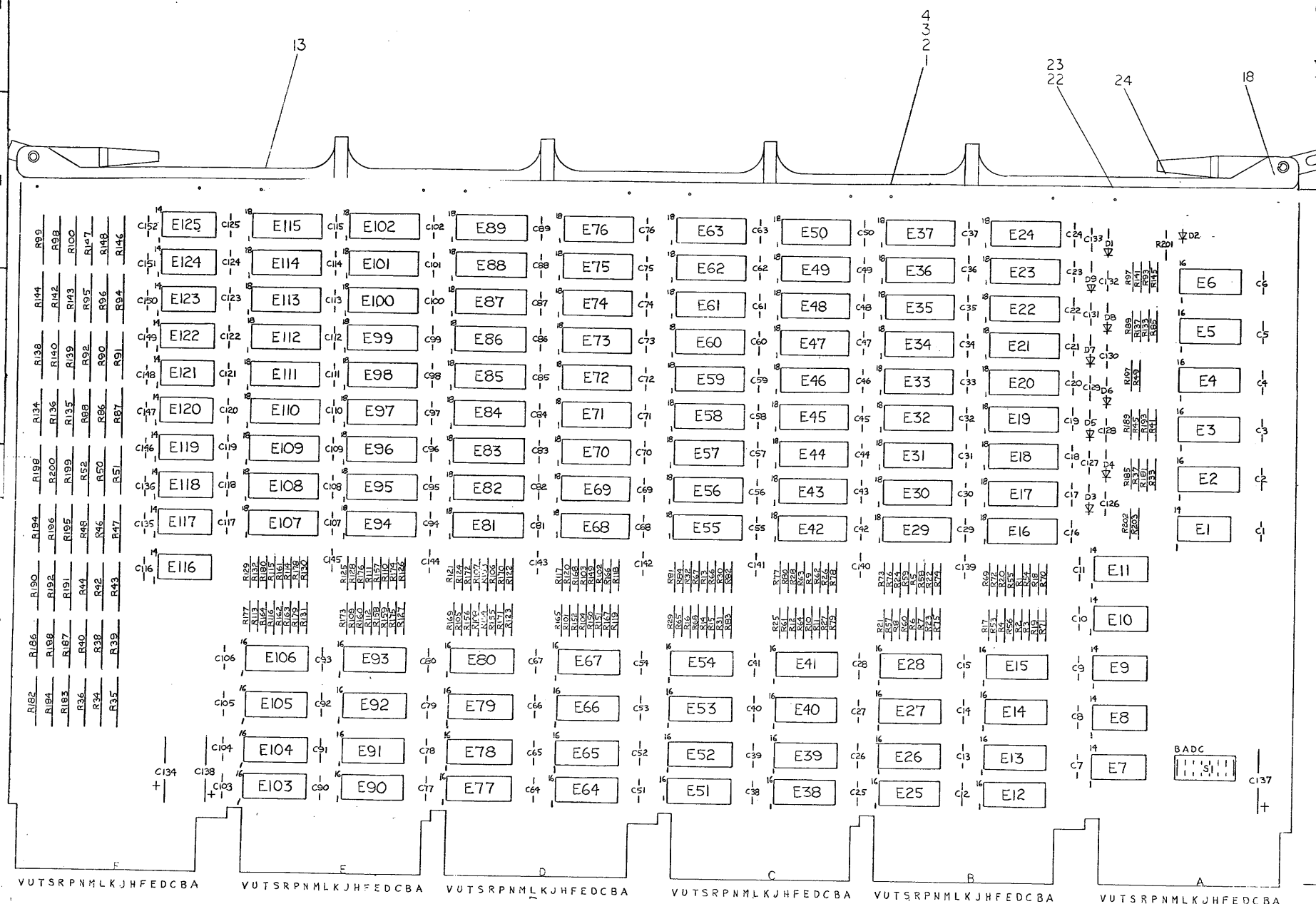
* ADJUST WIDTH OF PULSE.

JUMPER NOTES SLOT #16 AND CR #21

FIRST USED ON OPTION MODEL	QTY	DESCRIPTION	PART NO	ITEM NO
11/45				
UNLESS OTHERWISE SPECIFIED DIMENSION IN INCHES TOLERANCES				
DECIMALS	ANGLES	DRN	DATE	
.XX - .005	± 0° 30'	CHK'D	DATE	
.XX - .02		ENG	DATE	
X - .1		PROJ ENG	DATE	
REMOVE BURRS AND BREAK SHARP CORNERS SURFACE QUALITY				
MATERIAL	NEX - HIGHER ASSY	PROD	DATE	
FINISH				
TITLE: SEMI CONDUCTOR MEMORY CONTROL (SMCJ)				
SIZE CODE: DCS		NUMBER: M8110-0-1		REV: E
SCALE: 1:1		SHEET: 9 OF 9		DIST:

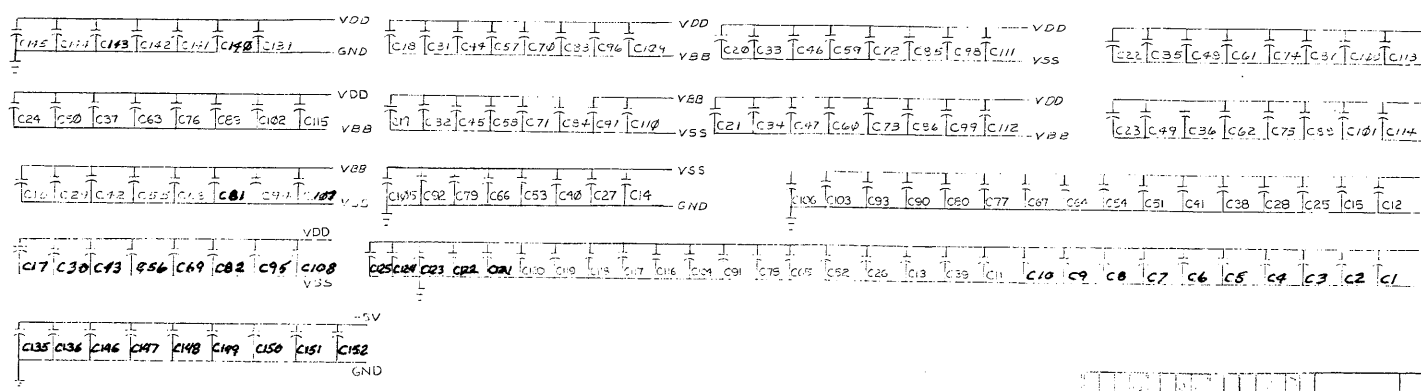
REV E
ITEM NO
M8110-0-1
DCS

This drawing and its specifications are the property of Digital Equipment Corporation and shall not be reproduced, stored in a retrieval system, or used in any form or by any means, electronic, mechanical, photocopying, recording, or by any information storage and retrieval system, without the prior written permission of Digital Equipment Corporation.



QTY	REF	DESIGNATION	DESCRIPTION	PART NO.	STEN NO.
1	1	G401 YA	6401		
1	1	S1	SWITCH, JUMPER	1001610	26
11	11	C135, C136, C146 THRU C154	CAP. 0.1MFD	1001610	25
		AS REQUIRED	TUBING TEFLON 22 GAUGE	9101256-9	24
10	10		SCREW NYLON 1/40 X .218	9006401-4	23
10	10		NUT HEX NYLON 4/40 X 1/4 X .332	9007992	22
1	1	D2	DIODE LED	1110625	21
9	9	E117 THRU E125	IC DEC 75108	1910725	20
3	3	E1, E7, E116	IC DEC 74500	1910532	19
2	2		EYELET	9006732	18
2	2	E8, E9	IC DEC 74564	1910542	17
2	2	E10, E11	IC DEC 74540	1910541	16
37	37	E2 THRU E6, E12 THRU E15, E25 THRU E28, E38 THRU E41, E51 THRU E54, E64 THRU E67, E77 THRU E80, E90 THRU E93, E103 THRU E106	IC DEC 3207-1	1910726	15
72	64	E16 THRU E24, E29 THRU E37, E42 THRU E50, E55 THRU E63, E68 THRU E76, E81 THRU E89, E94 THRU E102, E107 THRU E115	IC DEC 1103-1	2110732	14
1	1		HANDLE, MODULE	D-30-7401618-00	13
116	146	R1 THRU R33, R37, R41, R45, R49, R53 THRU R85, R89, R93, R97, R101 THRU R133, R137, R141, R145, R149 THRU R181, R185, R189, R193, R197	RES, 33, 1/4W, 10%	1301315	12
1	1	R201	RES, 470, 1/4W, 5%	1300316	11
2	2	R202, R203	RES, 180, 1/4W, 5%	1301322	10
36	36	R34, R35, R38, R39, R42, R43, R46, R47, R50, R51, R86, R87, R90, R91, R94, R95, R98, R99, R134, R135, R138, R139, R42, R43, R46, R47, R50, R51, R86, R87, R90, R91, R94, R95, R98, R99	RES, 196, 1/8W, 1% MF	1302956	9
18	18	R36, R40, R44, R48, R52, R88, R92, R96, R100, R136, R140, R144, R148, R154, R158, R192, R196, R200	RES, 10K, 1/8W, 1% MF	1300312	8
8	8	D3, D4 THRU D9	DIODE, D662	1100113	7
135	139	C1 THRU C125, C126 THRU C133, C139 THRU C145	CAP, .22MFD	1010272	6
3	3	C137, C138	CAP, 6.8MFD, 35V, 10%, TANT	1009306	5
1	1		ETCHED CIRCUIT BOARD	5009792	4
1	1		ASSY DRILLING HOLE LAYOUT	E-4H-6401-0-5	3
1	1		X-Y COORDINATE HOLE LOCATION	K-CO-6401-0-9	2
1	1		MODULE ECO HISTORY	B-MH 6001 6	1

NOTE:
 1. UNLESS OTHERWISE NOTED RESISTANCE IS IN Ω . CAPACITANCE IS IN PICO-FARADS. CAPS WITHOUT VALUE NOTED ARE .22 MFD.
 2. A, B, C, D ARE JUMPERS
 * 3. E21, E34, E47, E60, E68, E81, E94 AND E107, ARE INSTALLED IN G401 YA PARITY VARIATION ONLY.

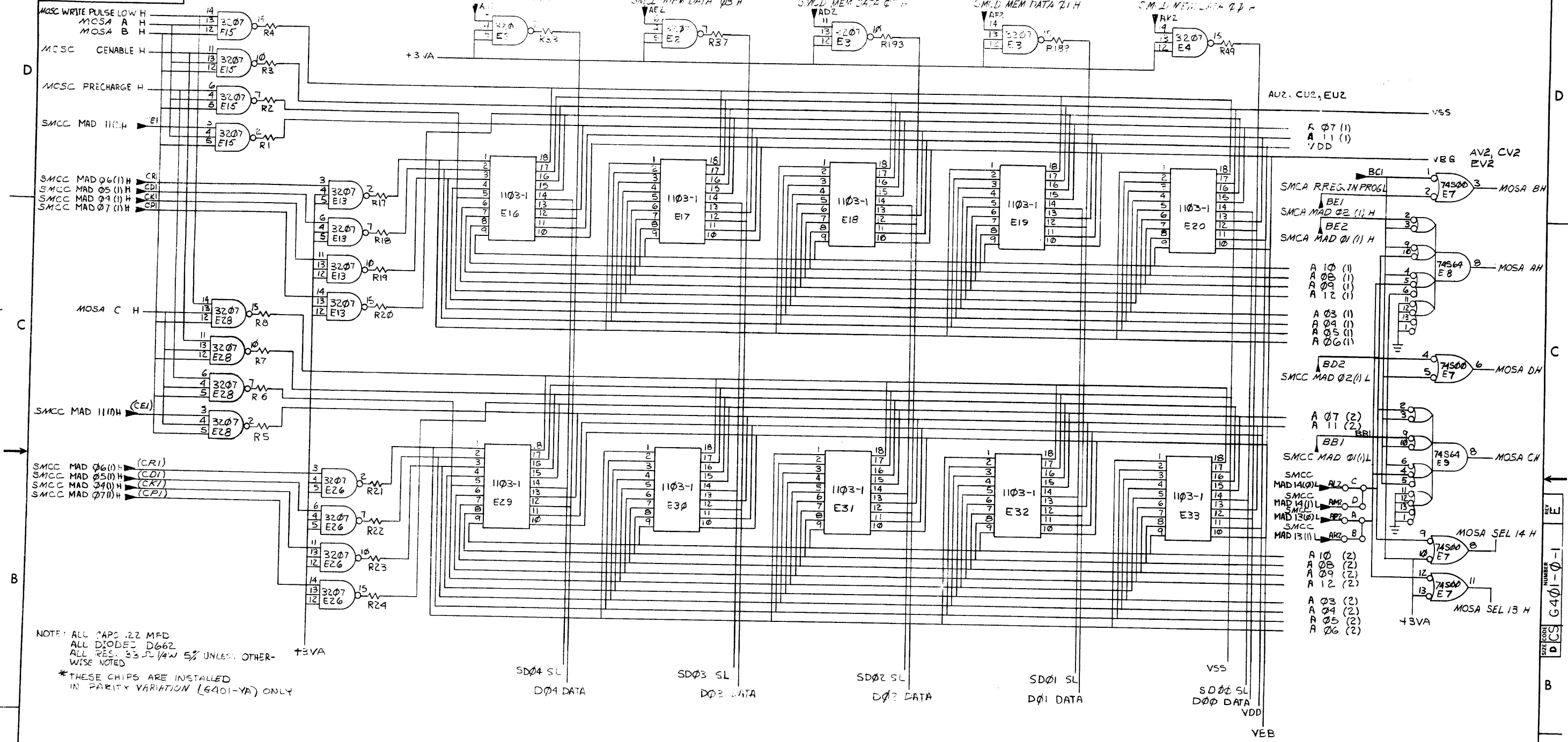


ITEM NO.	QTY	FROM	TO	PT
DEC 3207-1	B	16		

D664 IN645

DIGITAL EQUIPMENT CORPORATION
 HIGH SPEED MOS MEMORY MATRIX
 PICS 6401-0-1

This drawing and specifications, herein, are the property of Digital Equipment Corporation and shall not be reproduced or copied or used in whole or in part as the basis for the manufacture or sale of items without written permission.



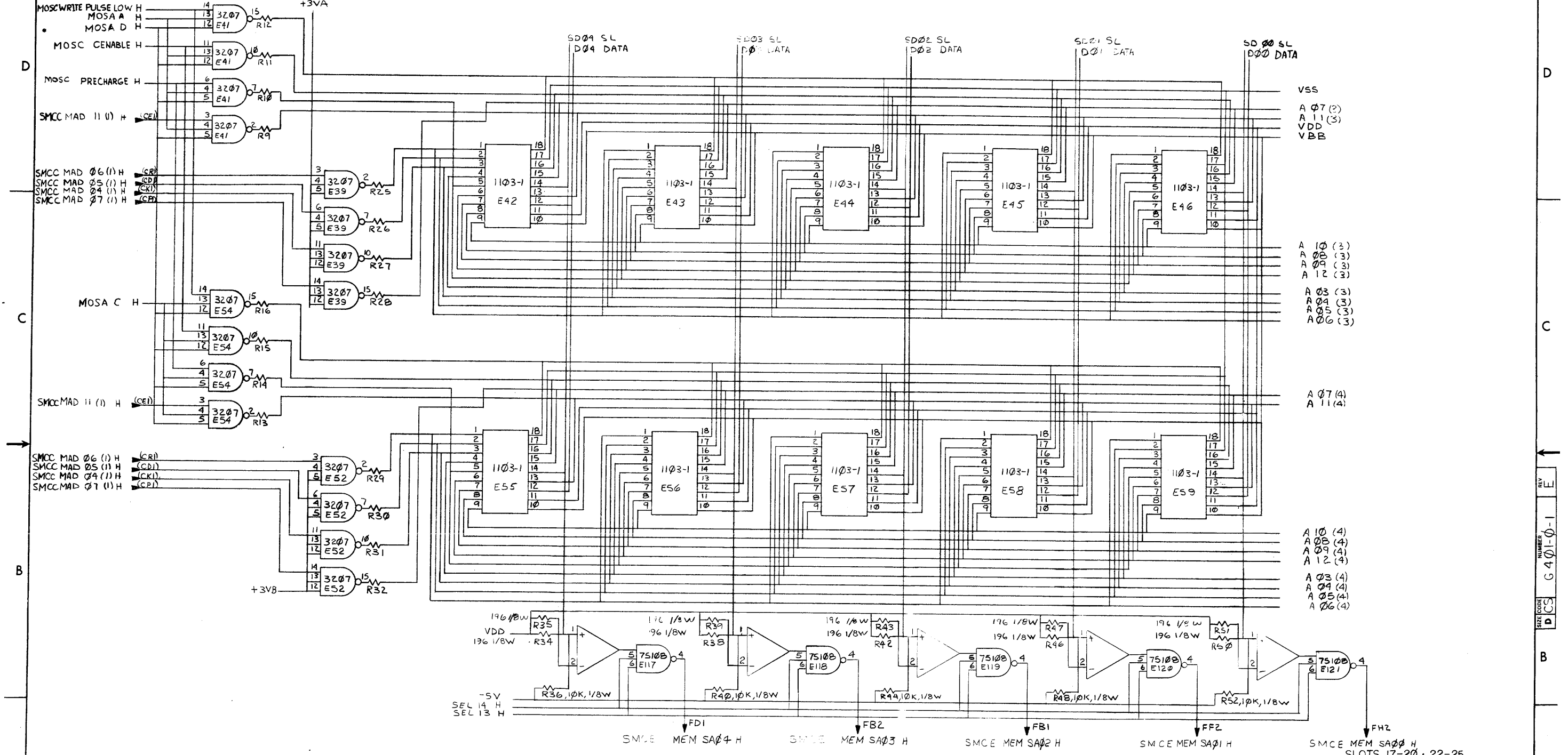
NOTE: ALL CAPS .22 MFD
 ALL DIODES D662
 ALL RES. 33 Ω 1/4W 5% UNLESS OTHERWISE NOTED
 *THESE CHIPS ARE INSTALLED IN PARITY VARIATION (G401-YA) ONLY

JUMPER CONFIGURATION	
CU ⁺ JUMPER	FOR
B,D	1ST 4K OF 16K BANK
A,D	2ND 4K OF 16K BANK
B,C	3RD 4K OF 16K BANK
A,C	4TH 4K OF 16K BANK

REV	CHANGE NO.

FIRST USED ON OPTION/MODEL	QTY.	DESCRIPTION	PART NO.	ITEM NO.
11/45				
PARTS LIST				
UNLESS OTHERWISE SPECIFIED DIMENSION IN INCHES. TOLERANCES				
DECIMALS	ANGLES	TITLE		
.XXX = .005	±0° 30'	HIGH SPEED MOS		
.XX = .02		MEMORY MATRIX		
.X = .1				
REMOVE BURRS AND BREAK SHARP CORNERS SURFACE QUALITY				
MATERIAL		NEXT HIGHER ASSY.		
FINISH		B-DD-11/45-0		
		SCALE	SIZE CODE	NUMBER
		SHEET 2 OF 9	D CS	G401-0-1
			DIST.	REV. E

This drawing and specifications, herein, are the property of Digital Equipment Corporation and shall not be reproduced or copied or used in whole or in part as the basis for the manufacture or sale of items without written permission.



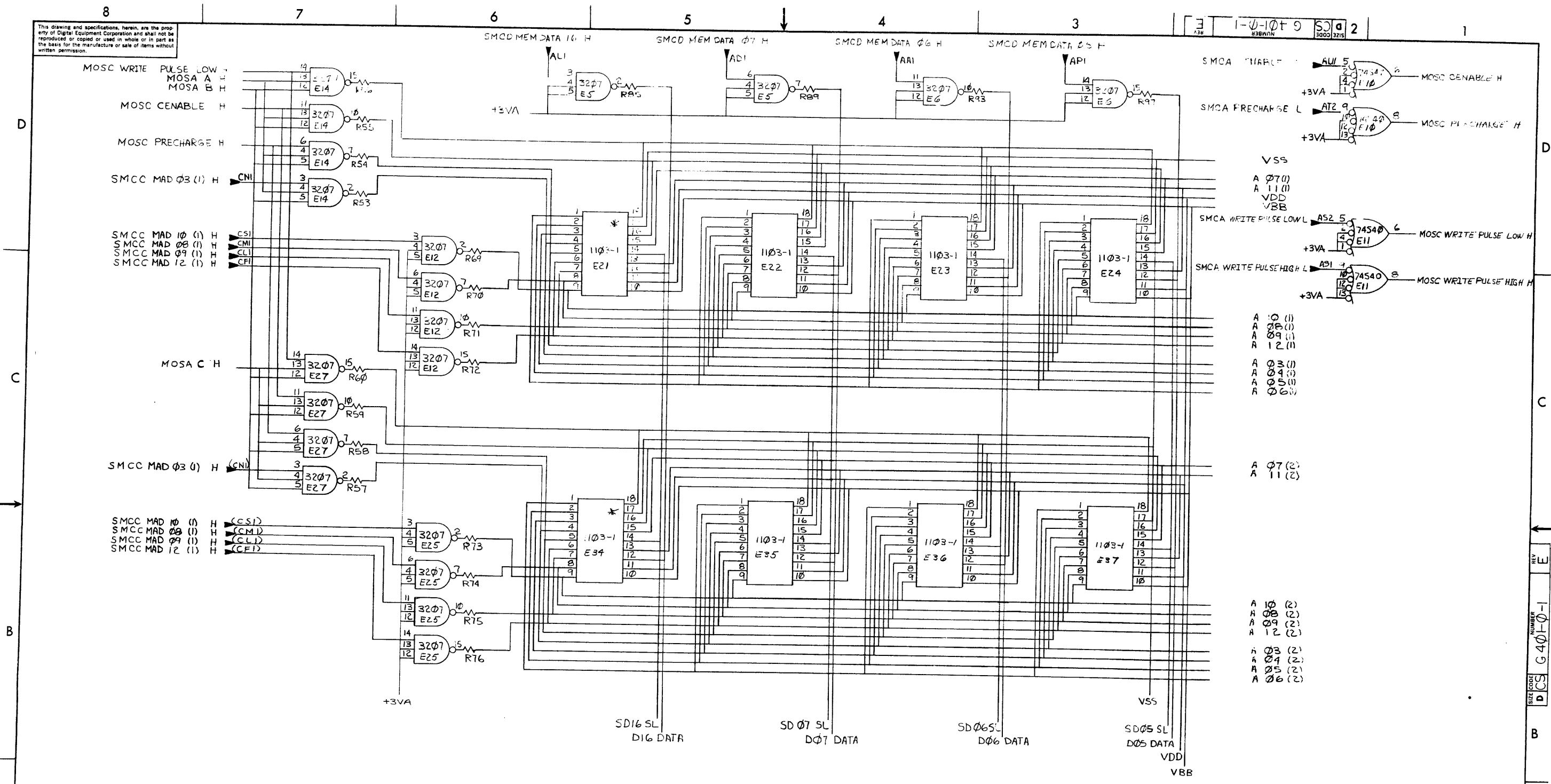
REV	CHANGE NO.

DEC FORM NO DRD 102-B

FIRST USED ON OPTION/MODEL	QTY.	DESCRIPTION	PART NO.	ITEM NO.
11/45				
PARTS LIST				
UNLESS OTHERWISE SPECIFIED DIMENSION IN INCHES. TOLERANCES		DATE 9/25/71	 DIGITAL EQUIPMENT CORPORATION MAYNARD, MASSACHUSETTS	
DECIMALS	ANGLES	DATE 2/23/72		
.XXX - .006	±0° 30'	DATE 2/23/72		
.XX - .02		DATE 2/23/72		
REMOVE BURRS AND BREAK SHARP CORNERS. SURFACE QUALITY		DATE 2/23/72	TITLE HIGH SPEED MOS MEMORY MATRIX (MOSB)	
MATERIAL		DATE 2/23/72		
NEXT HIGHER ASSY.		DATE 2/23/72	SIZE CODE NUMBER REV. DCS G401-0-1 E	
FINISH		DATE 2/23/72		
SCALE		SHEET 3 OF 9		DIST.

REV. E
NUMBER G401-0-1
D CS

This drawing and specifications, herein, are the property of Digital Equipment Corporation and shall not be reproduced or copied or used in whole or in part as the basis for the manufacture or sale of items without written permission.



- A 0 (1)
- A 08 (1)
- A 09 (1)
- A 12 (1)
- A 03 (1)
- A 04 (1)
- A 05 (1)
- A 06 (1)
- A 07 (2)
- A 11 (2)
- A 10 (2)
- A 08 (2)
- A 09 (2)
- A 12 (2)
- A 03 (2)
- A 04 (2)
- A 05 (2)
- A 06 (2)

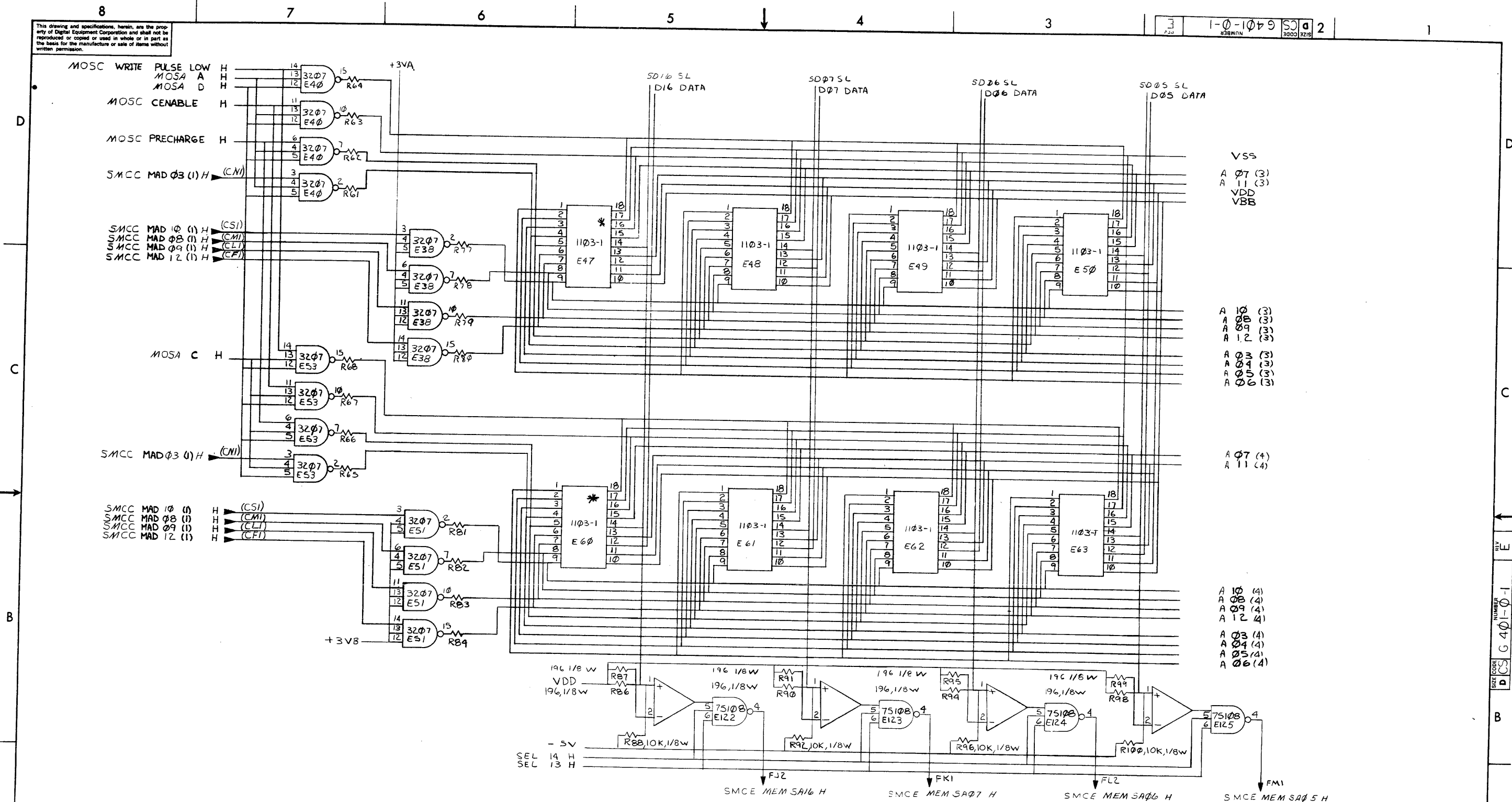
REV.	
CHG	

DEC FORM NO. DRP 102-B

FIRST USED ON OPTION/MODEL		QTY.	DESCRIPTION	PART NO.	ITEM NO.
11/45					
UNLESS OTHERWISE SPECIFIED DIMENSION IN INCHES. TOLERANCES		PARTS LIST			
DECIMALS	ANGLES	digital EQUIPMENT CORPORATION MAYNARD MASSACHUSETTS			
.XXX - .005	± 0° 30'	TITLE			
.XX - .02		HIGH SPEED MOS MEMORY MATRIX (MOSC)			
X - .1		MATERIAL			
REMOVE BURRS AND BREAK SHARP CORNERS SURFACE QUALITY		NEXT HIGHER ASSY.			
		B-DD-11/45-0		SIZE CODE	NUMBER
				DCS	G 401-0-1
		SCALE		DIST.	
		SHEET 4 OF 9			

REV. E
NUMBER G 401-0-1
DCS

This drawing and specifications, herein, are the property of Digital Equipment Corporation and shall not be reproduced or copied or used in whole or in part as the basis for the manufacture or sale of items without written permission.



VSS
A 07 (3)
A 11 (3)
VDD
VBB

A 10 (3)
A 08 (3)
A 09 (3)
A 12 (3)
A 03 (3)
A 04 (3)
A 05 (3)
A 06 (3)

A 07 (4)
A 11 (4)

A 10 (4)
A 08 (4)
A 09 (4)
A 12 (4)
A 03 (4)
A 04 (4)
A 05 (4)
A 06 (4)

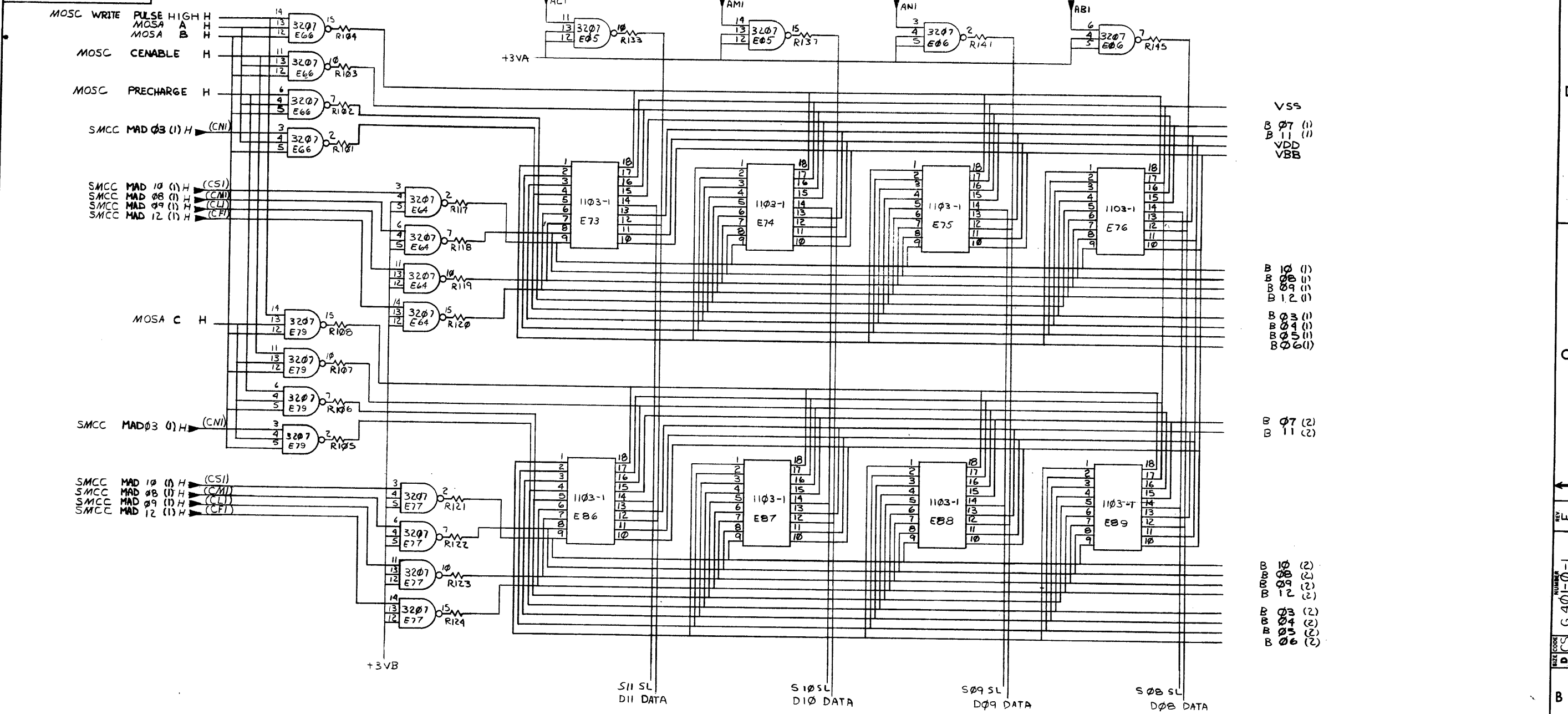
SLOTS 17-20; 22-25

REV.	
CHANGE NO.	
CHK	

DEC FORM NO. DRD 102-B

FIRST USED ON OPTION/MODEL	QTY.	DESCRIPTION	PART NO.	ITEM NO.
11/45				
PARTS LIST				
UNLESS OTHERWISE SPECIFIED DIMENSION IN INCHES. TOLERANCES		DRN: <i>DeWitt</i> DATE: 9/29/71	digital EQUIPMENT CORPORATION MAYNARD, MASSACHUSETTS	
DECIMALS ANGLES		DATE: 2/23/72		
.XXX = .005	±0° 30'	ENG. DATE: 2/23/72	TITLE HIGH SPEED MOS MEMORY MATRIX (MOSD)	
.XX = .02		PROB. ENG. DATE: 2/23/72		
.X = .1		DATE: 2/23/72		
REMOVE BURRS AND BREAK SHARP CORNERS SURFACE QUALITY		PROD. DATE: 2/23/72		
MATERIAL		NEXT HIGHER ASSY.		
FINISH		B-DD-11/45-0	SIZE CODE: DCS	NUMBER: G 401-0-1
SCALE		SHEET 5 OF 9	REV. E	

This drawing and specifications, herein, are the property of Digital Equipment Corporation and shall not be reproduced or copied or used in whole or in part as the basis for the manufacture or sale of items without written permission.



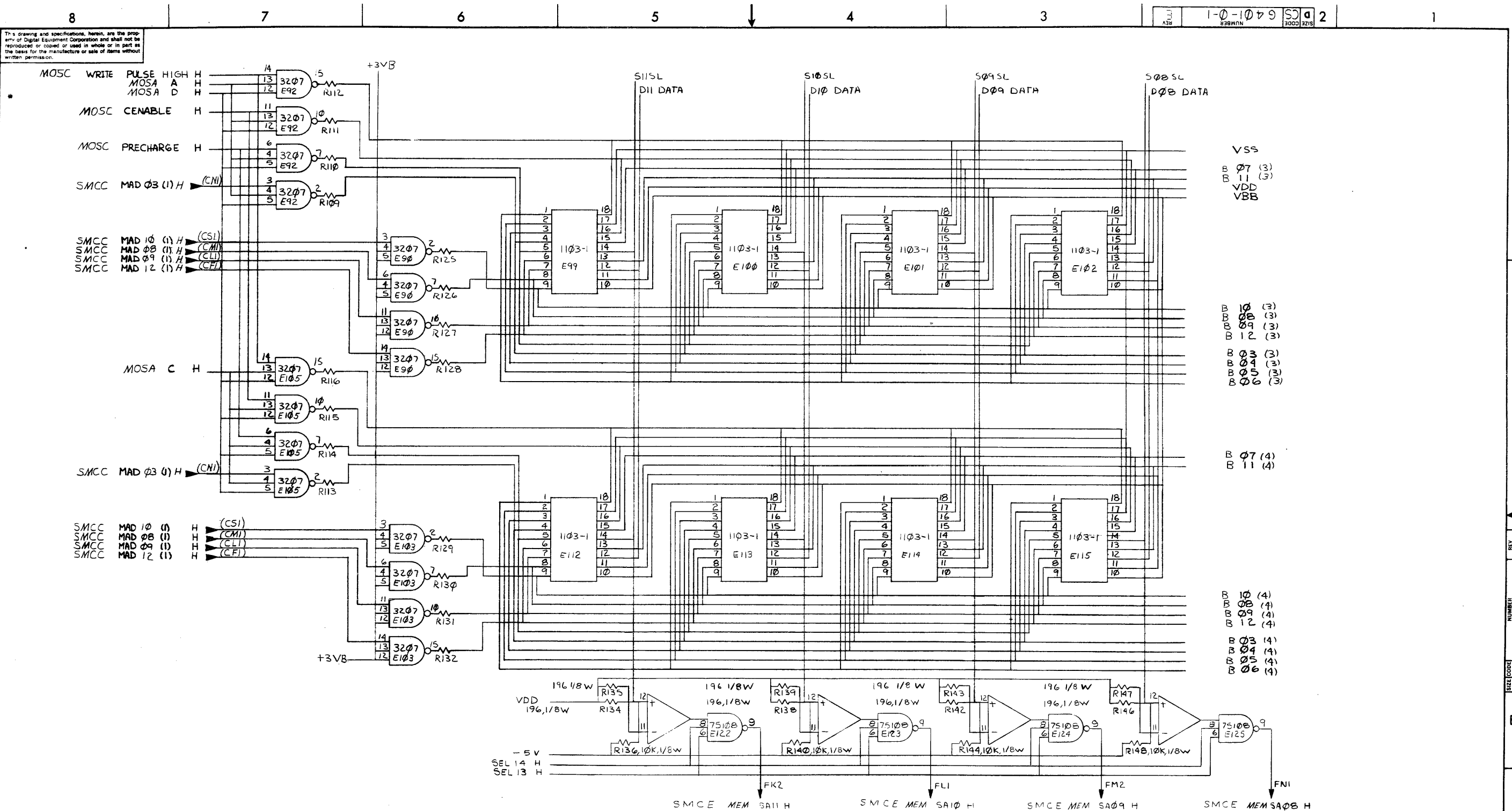
- VSS
- B 07 (1)
- B 11 (1)
- VDD
- VBB
- B 10 (1)
- B 08 (1)
- B 09 (1)
- D 12 (1)
- B 03 (1)
- B 04 (1)
- B 05 (1)
- B 06 (1)
- B 07 (2)
- B 11 (2)
- B 10 (2)
- B 08 (2)
- B 09 (2)
- B 12 (2)
- B 03 (2)
- B 04 (2)
- B 05 (2)
- B 06 (2)

SLOTS 17-20 ; 22-25

FIRST USED ON OPTION/MODEL	QTY.	DESCRIPTION	PART NO.	ITEM NO.
11/45				
PARTS LIST				
UNLESS OTHERWISE SPECIFIED DIMENSION IN INCHES. TOLERANCES		DRN <i>[Signature]</i> DATE 7/50/71	digital EQUIPMENT CORPORATION MAYNARD, MASSACHUSETTS	
DECIMALS	ANGLES	DATE 2/23/72		
.XXX - .005	±0° 30'	ENG. DATE 2/23/72	TITLE HIGH SPEED MOS MEMORY MATRIX (MOSE)	
.XX - .02		PROJ. ENG. DATE 2/23/72		
REMOVE BURRS AND BREAK SHARP CORNERS SURFACE QUALITY ✓		PROD. DATE 2/23/72		
MATERIAL	NEXT HIGHER ASSY.			
FINISH	B-DD-11/45-0	SCALE	SIZE CODE	NUMBER
	SHEET 6 OF 9		D CS	G 401-0-1

REV.	
CHANGE NO.	
CHK	

This drawing and specifications, herein, are the property of Digital Equipment Corporation and shall not be reproduced or copied or used in whole or in part as the basis for the manufacture or sale of items without written permission.



VSS
B 07 (3)
B 11 (3)
VDD
VBB

B 10 (3)
B 08 (3)
B 09 (3)
B 12 (3)
B 03 (3)
B 04 (3)
B 05 (3)
B 06 (3)

B 07 (4)
B 11 (4)

B 10 (4)
B 08 (4)
B 09 (4)
B 12 (4)
B 03 (4)
B 04 (4)
B 05 (4)
B 06 (4)

SLOTS 17-20; 22-25

FIRST USED ON OPTION/MODEL	QTY.	DESCRIPTION	PART NO.	ITEM NO.
11/45		PARTS LIST		
UNLESS OTHERWISE SPECIFIED DIMENSION IN INCHES. TOLERANCES				
DECIMALS	ANGLES	TITLE		
.XXX = .005	±0° 30'	HIGH SPEED MOS MEMORY MATRIX (MOSF)		
.XX = .02		MATERIAL		
.X = .1		NEXT HIGHER ASSY.		
REMOVE BURRS AND BREAK SHARP CORNERS SURFACE QUALITY		MATERIAL		
		FINISH		
		SCALE		
		SHEET 7 OF 9		
		SIZE CODE		
		NUMBER		
		REV.		
		D C S G 401-0-1 E		
		DIST.		

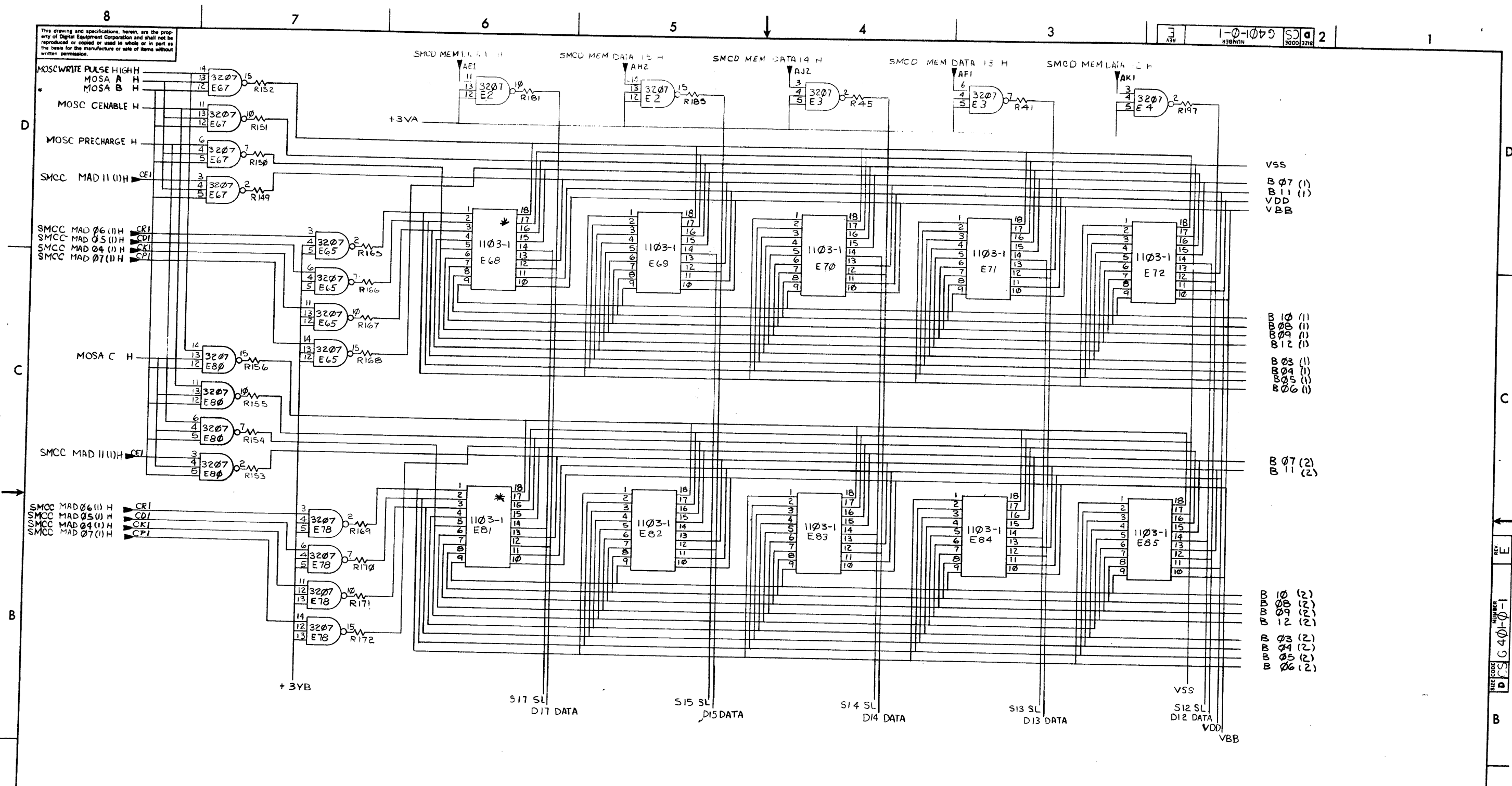
REV	CHANGE NO.

DEC FORM NO DRD 102-B

REV E
G 401-0-1
D C S

This drawing and specifications, herein, are the property of Digital Equipment Corporation and shall not be reproduced or copied or used in whole or in part as the basis for the manufacture or sale of items without written permission.

REV 1-0-1079 DCS 2



VSS
B 07 (1)
B 11 (1)
VDD
VBB

B 08 (1)
B 09 (1)
B 10 (1)
B 03 (1)
B 04 (1)
B 05 (1)
B 06 (1)

B 07 (2)
B 11 (2)

B 08 (2)
B 09 (2)
B 10 (2)
B 12 (2)
B 03 (2)
B 04 (2)
B 05 (2)
B 06 (2)

VSS
S12 SL D12 DATA
VDD
VBB

SLOTS 17-20; 22-25

FIRST USED ON OPTION/MODEL	QTY.	DESCRIPTION	PART NO.	ITEM NO.
11/45				
PARTS LIST				
UNLESS OTHERWISE SPECIFIED DIMENSION IN INCHES. TOLERANCES		DRN	DATE	 digital EQUIPMENT CORPORATION MATTHARD, MASSACHUSETTS
DECIMALS	ANGLES	ENG	DATE	
.XXX = .005	± 0° 30'	PROJ. ENG.	DATE	
.XX = .02		PBOD.	DATE	
REMOVE BURRS AND BREAK SHARP CORNERS SURFACE QUALITY				TITLE
				HIGH SPEED MOS MEMORY MATRIX (MOSH)
MATERIAL		NEXT HIGHER ASSY.		SIZE CODE
+		B-DD-11/45-0		DCS
FINISH		SCALE	SHEET 8 OF 9	NUMBER
+				G401-0-1
				REV.
				E

REV.	CHANGE NO.

DEC FORM NO DRD 102-B