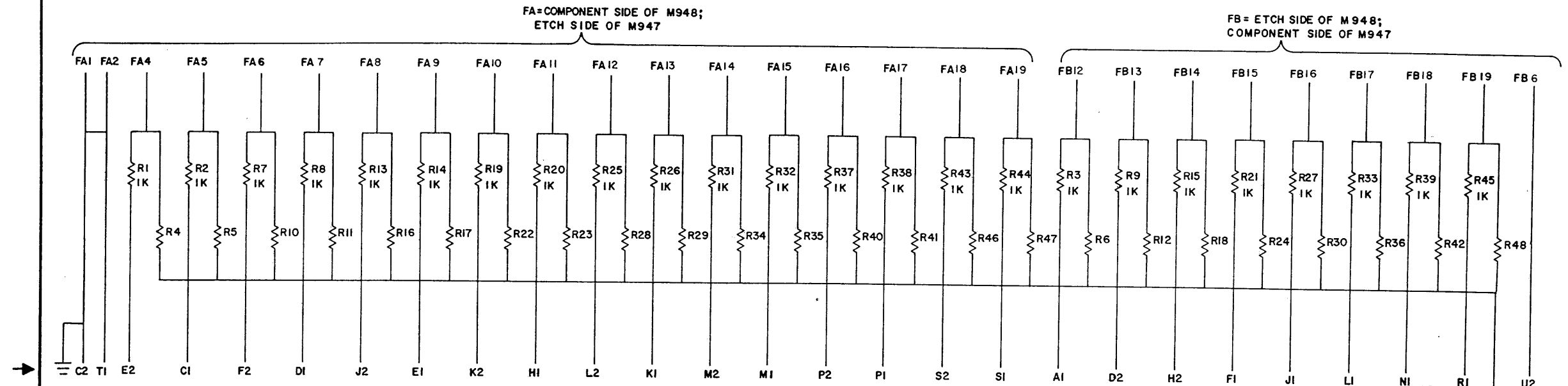
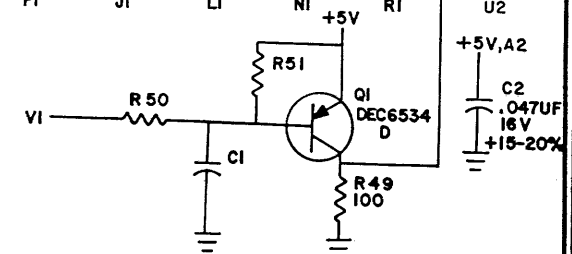
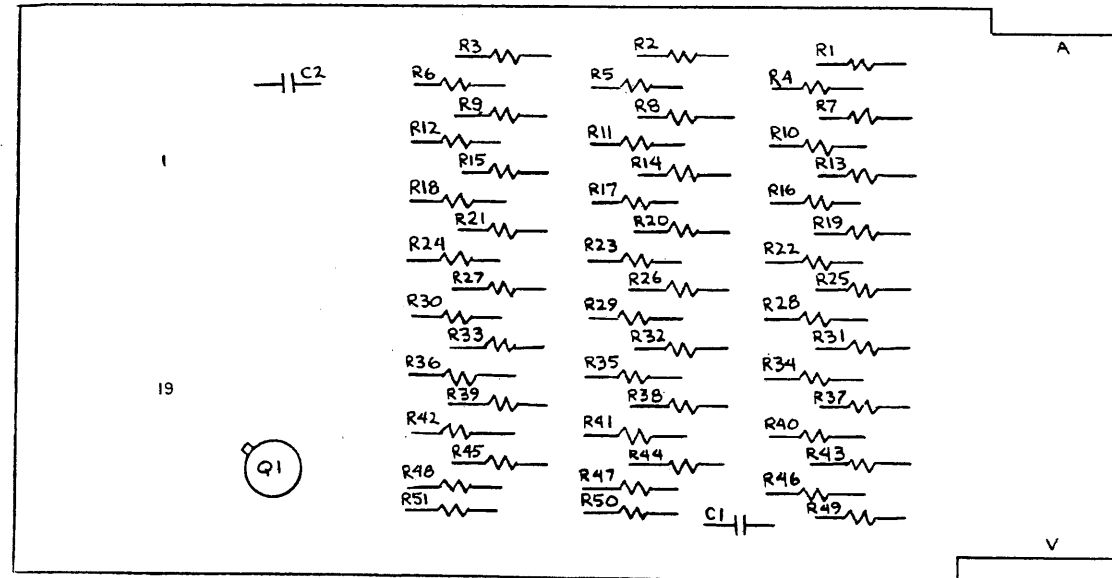


THIS SCHEMATIC IS FURNISHED ONLY FOR TEST AND MAINTENANCE PURPOSES. THE CIRCUITS ARE PROPRIETARY IN NATURE AND SHOULD BE TREATED ACCORDINGLY. COPYRIGHT 1970 BY DIGITAL EQUIPMENT CORPORATION



UNLESS OTHERWISE INDICATED:  
RESISTORS ARE 3.3K, 1/4W, 5%  
CAPACITORS ARE .01UF, 100V, 20%



ITEM NO.	DEC PART NO.	DESCRIPTION	QTY
10	1503409-00	TRANSISTOR DEC 6534D	1
9	1300439	RES. 3.3K 1/4W 5%	26
8	1300365	RES. 1K 1/4W 5%	24
7	1300231	RES. 100 1/4W 10%	1
6	1009678	CAP. .047 UF 16V 50 -20%	1
5	1001610	CAF. .01 UF 100V 20% DISC	1
4	5009449	ETCHED CKT. BOARD	1
3	B-MH-M948-0-6	MODULE ECO HISTORY	
2	C-AH-M948-0-5	ASSY/DRILLING HOLE LAYOUT	
1	K-CO-M948-0-4	X-Y COORDINATE HOLE LOCATION	

PARTS LIST

REVISIONS CHK CHG NO. REV.	DRN. <i>S. Cooper</i>	DATE <i>5/14/70</i>	TRANSISTOR & DIODE CONVERSION CHART		<b>digital</b> EQUIPMENT CORPORATION MAYNARD, MASSACHUSETTS	TITLE KI 10 INDICATOR BOARD			
	DATE <i>5/14/70</i>	DATE <i>5/14/70</i>	DEC	EIA		SIZE C	CODE CS	NUMBER M948-0-1	REV. A
	ENG. <i>S. Cooper</i>	DATE <i>3-24-71</i>	DEC6534D	MPS6534					
	PROD.	DATE							

DEC FORM NO. DRC 102

REV. A  
NUMBER M948-0-1  
SIZE CODE C CS

*Part B...*