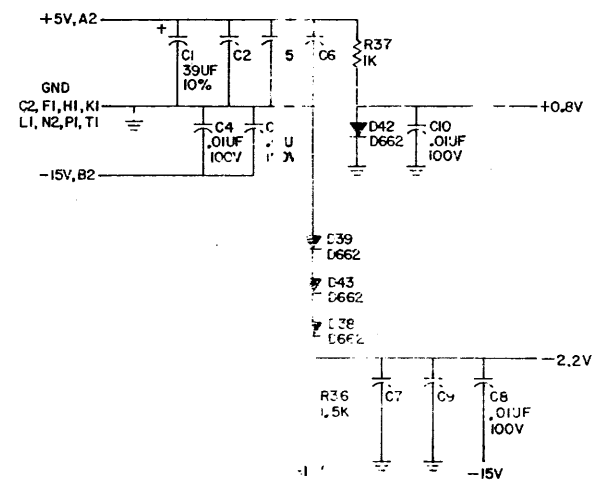
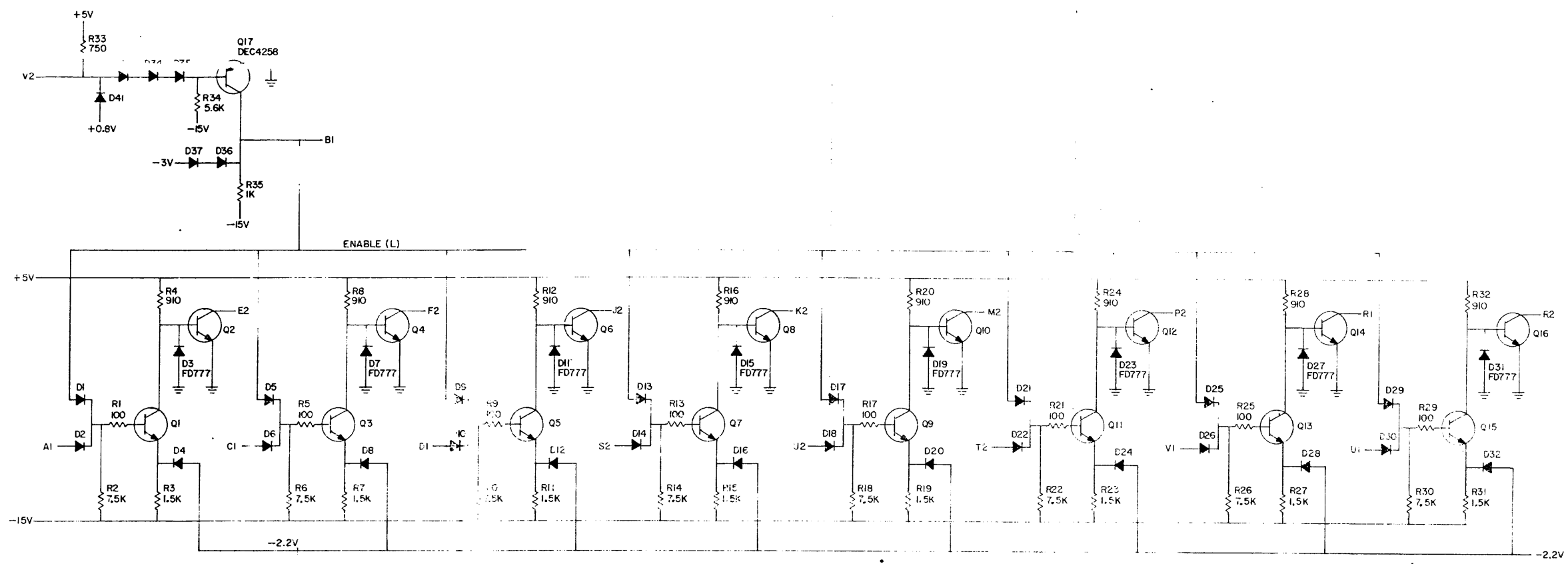
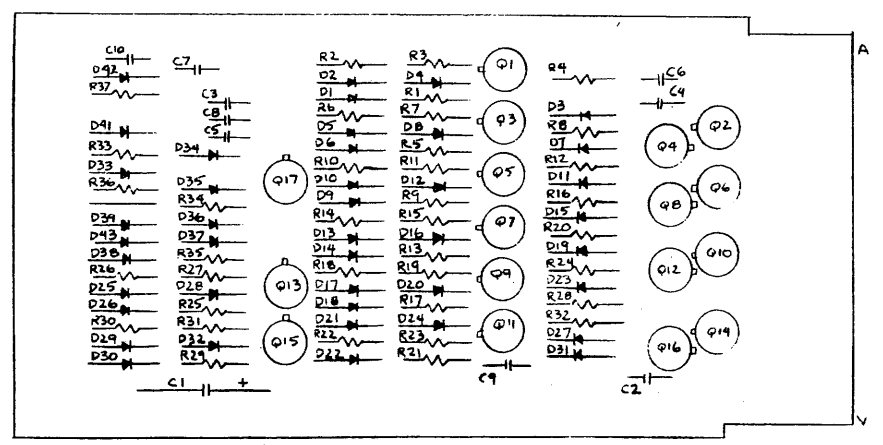


THIS SCHEMATIC IS FURNISHED ONLY FOR TEST AND MAINTENANCE PURPOSES THE CIRCUITS ARE PROPRIETARY IN NATURE AND SHOULD BE TREATED ACCORDINGLY COPYRIGHT 1970 BY DIGITAL EQUIPMENT CORPORATION

0-999W 0



UNLESS OTHERWISE INDICATED:  
 CAPACITORS = .047UF, 16V, +15-20%  
 DIODES = D664  
 RESISTORS = 1/4W, 5%  
 TRANSISTORS = DEC4274



21	1305374	RES. 910 $\frac{1}{4}$ W 5%	8
20	1301874	RES. 5.6K $\frac{1}{4}$ W 5%	1
19	9008337-06	HANDLE, FLIP CHIP - MAGENTA	1
18	9006732	EYELET # GS 4-7	2
17	1505321	TRANSISTOR DEC 4258	1
16	1505302	TRANSISTOR DEC 4274	16
15	1301422	RES. 7.5K $\frac{1}{4}$ W 5%	8
14	1301401	RES. 750 $\frac{1}{4}$ W 5%	1
13	1300391	RES. 1.5K $\frac{1}{4}$ W 5%	9
12	1300365	RES. 1K $\frac{1}{4}$ W 5%	20
11	1300229	RES. 100 $\frac{1}{4}$ W 5%	4
10	1103041	DIODE FD777	30
9	1100114	DIODE D664	4
8	1100113	DIODE D662	4
7	1009678	CAP. .047UF, 16V, 15-20%	5
6	1001610	CAP. .01UF, 100V, 20% DISC	4
5	1000076	CAP. 39UF, 10V, 10% S. TANT	1
4	5009324	ETCHED CIRCUIT BOARD	1
3	R-MEM-565-0-6	MODULE EQN HISTORY	
2	D-AH-565-0-5	ASSY/DRILLING HOLE LAYOUT	
1	D-C-M565-0-4	X-Y COORDINATE HOLE LOCATION	
REF:	66 PART LC.	DESCRIPTION	QTY.
SEC:		DESCRIPTION	
		PARTS LIST	

REV. 1	DATE 12/2/70	DESIGNED BY	DATE	DEC 70	DATE	DEC 70	DATE	DEC 70	DATE	DEC 70
CHK'D BY	DATE	DATE	DATE	DATE	DATE	DATE	DATE	DATE	DATE	DATE
DATE	DATE	DATE	DATE	DATE	DATE	DATE	DATE	DATE	DATE	DATE
DATE	DATE	DATE	DATE	DATE	DATE	DATE	DATE	DATE	DATE	DATE

TRANSISTOR & DIODE CONVERSION CHART

DEC	EA	DEC	EA
DEC4274	2N4274	D664	1N564
D662	1N662	DEC4258	1N4258
FD777	SAME		

digital EQUIPMENT CORPORATION

TITLE: MEMORY BUS RECEIVER 1565

SIZE: D CS NUMBER: 1565-0-1 REV: D

PRINTED CIRCUIT REV: C