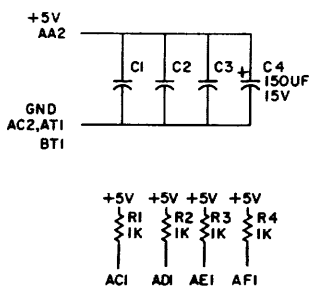
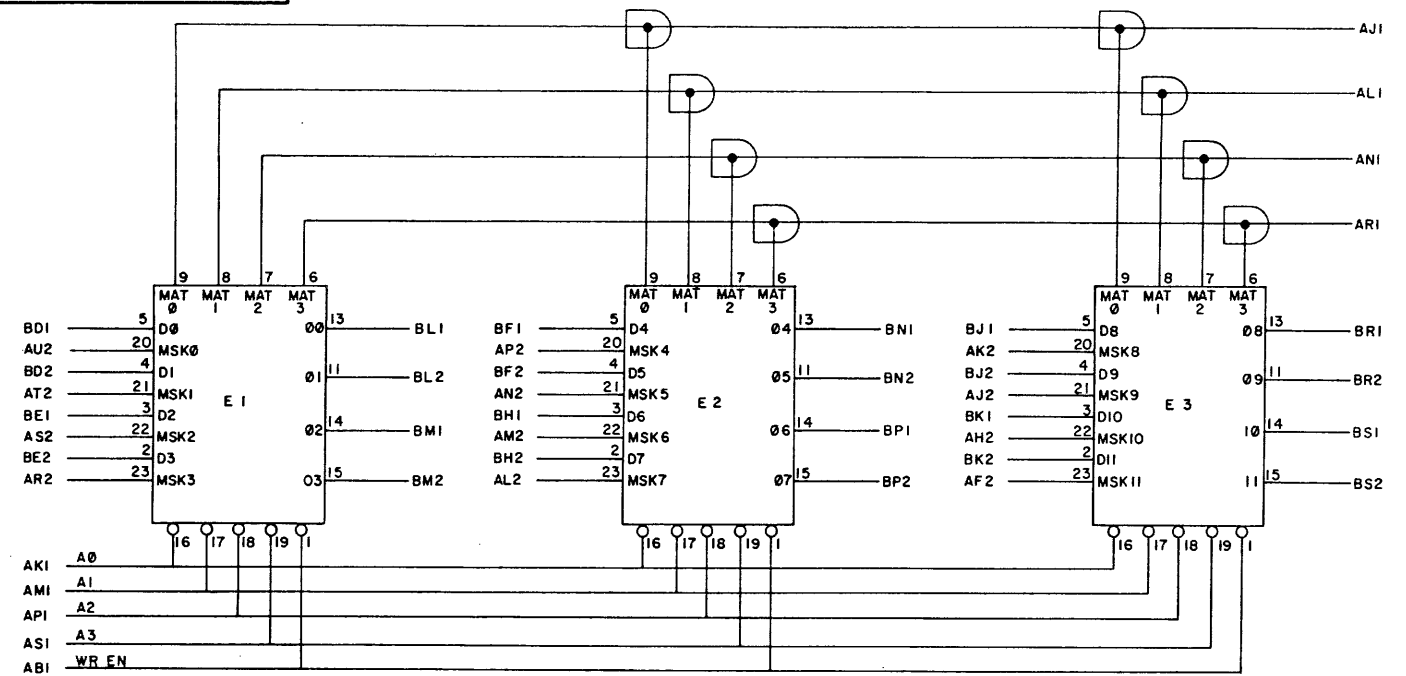
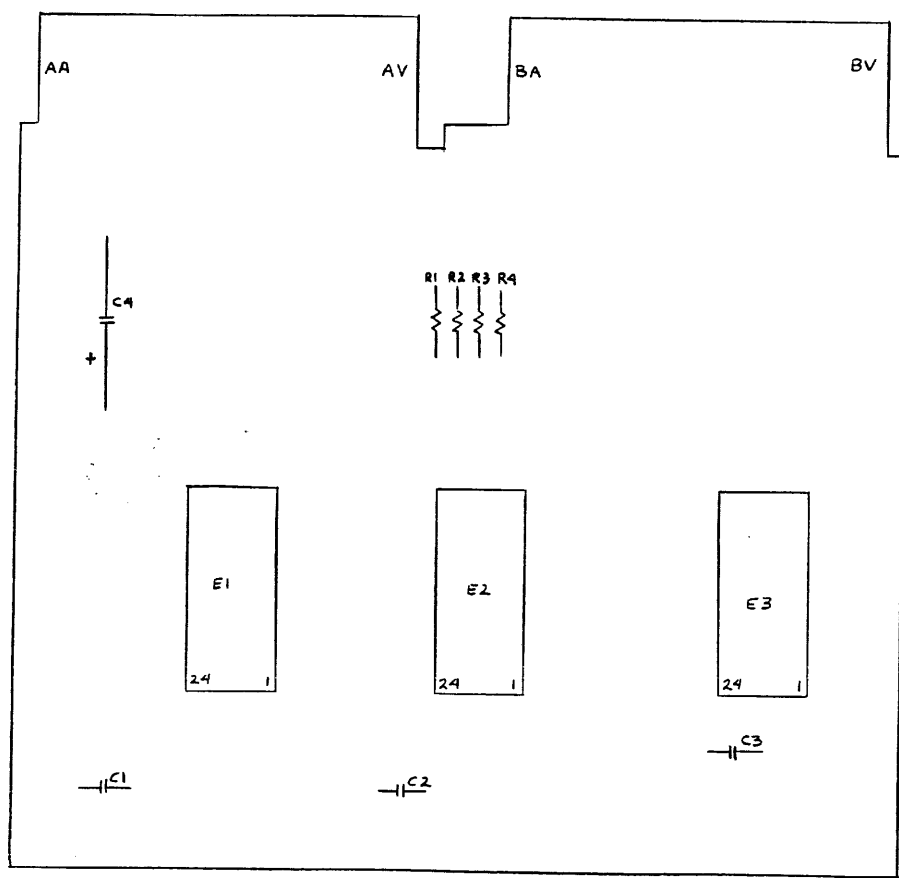


THIS SCHEMATIC IS FURNISHED ONLY FOR TEST AND MAINTENANCE PURPOSES. THE CIRCUITS ARE PROPRIETARY IN NATURE AND SHOULD BE TREATED ACCORDINGLY. COPYRIGHT 1971 BY DIGITAL EQUIPMENT CORPORATION.



UNLESS OTHERWISE INDICATED:
 RESISTORS ARE 1/4W, 5%
 CAPACITORS ARE .01UF, 100V, 20%
 IC'S ARE DEC4102
 PIN 12 = GND
 PIN 24 = +5V ON EACH IC



ITEM NO.	PART NO.	DESCRIPTION	QTY
10	9008337-06	HANDLE, FLIP CHIP - MAGENTA	2
9	9006732	EYELET #GS 4-7	4
8	1909721	I.C. DEC 4102	3
7	1300365	RES. 1K, 1/4W, 5%	12
6	1001610	CAP. .01UF, 100V, 20% DISC	3
5	1000084	CAP. 150UF, 15V, 20%	1
4	5009394	ETCHED CIRCUIT BOARD	1
3	B-MH-M260-0-6	MODULE ECO HISTORY	
2	D-AH-M260-0-5	ASSY/DRILLING HOLE LAYOUT	
1	R-CO-M260-0-4	X-Y COORDINATE HOLE LOCATION	

REVISIONS: CHG NO. REV. _____

DATE: 5/1/72
 BY: S. Cooper
 DATE: 12/11/71
 DATE: 12/11/71

TRANSISTOR & DIODE CONVERSION CHART

DEC	EIA	DEC	EIA

digital EQUIPMENT CORPORATION
 TITLE: 16 WORD X 12 BIT ASS. MEM. CELL M260
 NUMBER: D CS M260-0-1
 PRINTED CIRCUIT REV. A

REV. 1/72
 NUMBER
 D CS M260-0-1