



Red Hat Enterprise Linux 7 Load Balancer Administration

Load Balancer Add-on for Red Hat Enterprise Linux

Red Hat Enterprise Linux 7 Load Balancer Administration

Load Balancer Add-on for Red Hat Enterprise Linux

Legal Notice

Copyright © 2015 Red Hat, Inc. and others.

This document is licensed by Red Hat under the [Creative Commons Attribution-ShareAlike 3.0 Unported License](#). If you distribute this document, or a modified version of it, you must provide attribution to Red Hat, Inc. and provide a link to the original. If the document is modified, all Red Hat trademarks must be removed.

Red Hat, as the licensor of this document, waives the right to enforce, and agrees not to assert, Section 4d of CC-BY-SA to the fullest extent permitted by applicable law.

Red Hat, Red Hat Enterprise Linux, the Shadowman logo, JBoss, MetaMatrix, Fedora, the Infinity Logo, and RHCE are trademarks of Red Hat, Inc., registered in the United States and other countries.

Linux® is the registered trademark of Linus Torvalds in the United States and other countries.

Java® is a registered trademark of Oracle and/or its affiliates.

XFS® is a trademark of Silicon Graphics International Corp. or its subsidiaries in the United States and/or other countries.

MySQL® is a registered trademark of MySQL AB in the United States, the European Union and other countries.

Node.js® is an official trademark of Joyent. Red Hat Software Collections is not formally related to or endorsed by the official Joyent Node.js open source or commercial project.

The OpenStack® Word Mark and OpenStack Logo are either registered trademarks/service marks or trademarks/service marks of the OpenStack Foundation, in the United States and other countries and are used with the OpenStack Foundation's permission. We are not affiliated with, endorsed or sponsored by the OpenStack Foundation, or the OpenStack community.

All other trademarks are the property of their respective owners.

Abstract

Building a Load Balancer Add-On system offers a highly available and scalable solution for production services using specialized Linux Virtual Servers (LVS) for routing and load-balancing techniques configured through Keepalived and HAProxy. This book discusses the configuration of high-performance systems and services using the Load Balancer technologies in Red Hat Enterprise Linux 7.

Table of Contents

Chapter 1. Load Balancer Overview	2
1.1. keepalived	2
1.2. haproxy	2
1.3. keepalived and haproxy	2
Chapter 2. Keepalived Overview	4
2.1. A Basic Keepalived Load Balancer Configuration	4
2.2. A Three-Tier keepalived Load Balancer Configuration	6
2.3. keepalived Scheduling Overview	7
2.4. Routing Methods	10
2.5. Persistence and Firewall Marks with Keepalived	12
Chapter 3. Setting Up Load Balancer Prerequisites for Keepalived	14
3.1. The NAT Load Balancer Network	14
3.2. Load Balancer via Direct Routing	16
3.3. Putting the Configuration Together	19
3.4. Multi-port Services and Load Balancer	20
3.5. Configuring FTP	21
3.6. Saving Network Packet Filter Settings	24
3.7. Turning on Packet Forwarding and Nonlocal Binding	24
3.8. Configuring Services on the Real Servers	24
Chapter 4. Initial Load Balancer Configuration with Keepalived	26
4.1. A Basic Keepalived configuration	26
4.2. Keepalived Direct Routing Configuration	28
4.3. Starting the service	29
Chapter 5. HAProxy Configuration	31
5.1. HAProxy Scheduling Algorithms	31
5.2. global Settings	32
5.3. default Settings	33
5.4. frontend Settings	33
5.5. backend Settings	34
5.6. Starting haproxy	34
Revision History	35
Index	35

Chapter 1. Load Balancer Overview

The Load Balancer is a set of integrated software components that provide for balancing IP traffic across a set of real servers. It consists of two main technologies to monitor cluster members and cluster services: Keepalived and HAProxy. Keepalived uses LVS to perform load balancing and failover tasks on, while HAProxy performs load balancing and high-availability services to TCP and HTTP applications.

1.1. keepalived

The **keepalived** daemon runs on both the active and passive LVS routers. All routers running **keepalived** use the *Virtual Redundancy Routing Protocol* (VRRP). The active router sends VRRP advertisements at periodic intervals; if the backup routers fail to receive these advertisements, a new active router is elected.

On the active router, **keepalived** can also perform load balancing tasks for real servers.

Keepalived is the controlling process related to LVS routers. At boot time, the daemon is started by the **systemctl** command, which reads the configuration file `/etc/keepalived/keepalived.conf`. On the active router, the **keepalived** daemon starts the LVS service and monitors the health of the services based on configured topology. Using VRRP, the active router sends periodic advertisements to the backup routers. On the backup routers, the VRRP instance determines the running status of the active router. If the active router fails advertise after a user-configurable interval, Keepalived initiates failover. During failover, the virtual servers are cleared. The new active router takes control of the VIP, sends out an ARP message, sets up IPVS table entries (virtual servers), begins health checks, and starts sending VRRP advertisements.

Keepalived performs failover on layer 4, or the Transport layer, upon which TCP conducts connection-based data transmissions. When a real server fails to reply to simple timeout TCP connection, **keepalived** detects that the server has failed and removes it from the server pool.

1.2. haproxy

HAProxy offers load balanced services to HTTP and TCP-based services, such as internet-connected services and web-based applications. Depending on the load balancer scheduling algorithm chosen, **haproxy** is able to process several events on thousands of connections across a pool of multiple real servers acting as one virtual server. The scheduler determines the volume of connections and either assigns them equally in non-weighted schedules or given higher connection volume to servers that can handle higher capacity in weighted algorithms.

HAProxy allows users to define several proxy services, and performs load balancing services of the traffic for the proxies. Proxies are made up of a frontend and one or more backends. The frontend defines IP address (the VIP) and port the on which the proxy listens, as well as defines the backends to use for a particular proxy.

The backend is a pool of real servers, and defines the load balancing algorithm.

HAProxy performs load-balancing management on layer 7, or the Application layer. In most cases, administrators deploy HAProxy for HTTP-based load balancing, such as production web applications, for which high availability infrastructure is a necessary part of business continuity.

1.3. keepalived and haproxy

Administrators can use both Keepalived and HAProxy together for a more robust and scalable high availability environment. Using the speed and scalability of HAProxy to perform load balancing for HTTP and other TCP-based services in conjunction with Keepalived failover services, administrators can increase availability by distributing load across real servers as well as ensuring continuity in the event of router outage by performing failover to the backup router(s).

Chapter 2. Keepalived Overview

Keepalived runs on an *active LVS router* as well as one or more optional *backup LVS routers*. The active LVS router serves two roles:

- To balance the load across the real servers.
- To check the integrity of the services on each real server.

The active (master) router informs the backup routers of its active status using the *Virtual Router Redundancy Protocol* (VRRP), which requires the master router to send out advertisements at regular intervals. If the active router stops sending advertisements, a new master is elected.

This chapter provides an overview of The Load Balancer components and functions, and consists of the following sections:

- [Section 2.1, “A Basic Keepalived Load Balancer Configuration”](#)
- [Section 2.2, “A Three-Tier keepalived Load Balancer Configuration”](#)
- [Section 2.3, “keepalived Scheduling Overview”](#)
- [Section 2.4, “Routing Methods”](#)
- [Section 2.5, “Persistence and Firewall Marks with Keepalived”](#)

2.1. A Basic Keepalived Load Balancer Configuration

[Figure 2.1, “A Basic Load Balancer Configuration”](#) shows a simple Keepalived Load Balancer configuration consisting of two layers. On the first layer is one active and several backup LVS router. Each LVS router has two network interfaces, one interface on the Internet and one on the private network, enabling them to regulate traffic between the two networks. For this example the active router is using *Network Address Translation* or *NAT* to direct traffic from the Internet to a variable number of real servers on the second layer, which in turn provide the necessary services. Therefore, the real servers in this example are connected to a dedicated private network segment and pass all public traffic back and forth through the active LVS router. To the outside world, the servers appears as one entity.

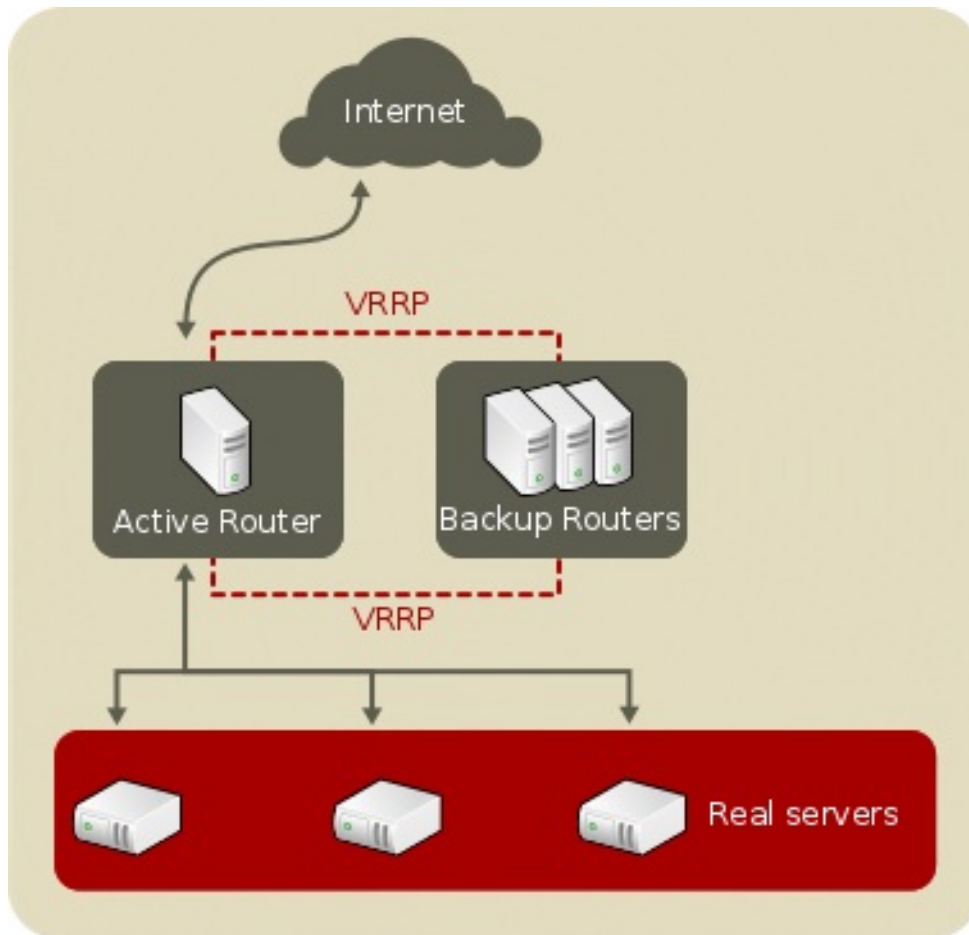


Figure 2.1. A Basic Load Balancer Configuration

Service requests arriving at the LVS router are addressed to a *virtual IP* address, or *VIP*. This is a publicly-routable address the administrator of the site associates with a fully-qualified domain name, such as `www.example.com`, and is assigned to one or more *virtual servers*. A virtual server is a service configured to listen on a specific virtual IP. A VIP address migrates from one LVS router to the other during a failover, thus maintaining a presence at that IP address (also known as *floating IP addresses*).

VIP addresses may be assigned to the same device which connects the LVS router to the Internet. For instance, if `eth0` is connected to the Internet, then multiple virtual servers can be assigned to `eth0`. Alternatively, each virtual server can be associated with a separate device per service. For example, HTTP traffic can be handled on `eth0` at `192.168.1.111` while FTP traffic can be handled on `eth0` at `192.168.1.222`.

In a deployment scenario involving both one active and one passive router, the role of the active router is to redirect service requests from virtual IP addresses to the real servers. The redirection is based on one of eight supported load-balancing algorithms described further in [Section 2.3, “keepalived Scheduling Overview”](#).

The active router also dynamically monitors the overall health of the specific services on the real servers through three built-in health checks: simple TCP connect, HTTP, and HTTPS. For TCP connect, the active router will periodically check that it can connect to the real servers on a certain port. For HTTP and HTTPS, the active router will periodically fetch a URL on the real servers and verify its content.

The backup routers perform the role of standby systems. Router failover is handled by VRRP. On startup, all routers will join a multicast group. This multicast group is used to send and receive VRRP advertisements. Since VRRP is a priority based protocol, the router with the highest priority is elected

the master. Once a router has been elected master, it is responsible for sending VRRP advertisements at periodic intervals to the multicast group.

If the backup routers fail to receive advertisements within a certain time period (based on the advertisement interval), a new master will be elected. The new master will take over the VIP and send an *Address Resolution Protocol* (ARP) message. When a router returns to active service, it may either become a backup or a master. The behavior is determined by the router's priority.

The simple, two-layered configuration used in [Figure 2.1, “A Basic Load Balancer Configuration”](#) is best for serving data which does not change very frequently — such as static webpages — because the individual real servers do not automatically sync data between each node.

2.2. A Three-Tier keepalived Load Balancer Configuration

[Figure 2.2, “A Three-Tier Load Balancer Configuration”](#) shows a typical three-tier Keepalived Load Balancer topology. In this example, the active LVS router routes the requests from the Internet to the pool of real servers. Each of the real servers then accesses a shared data source over the network.

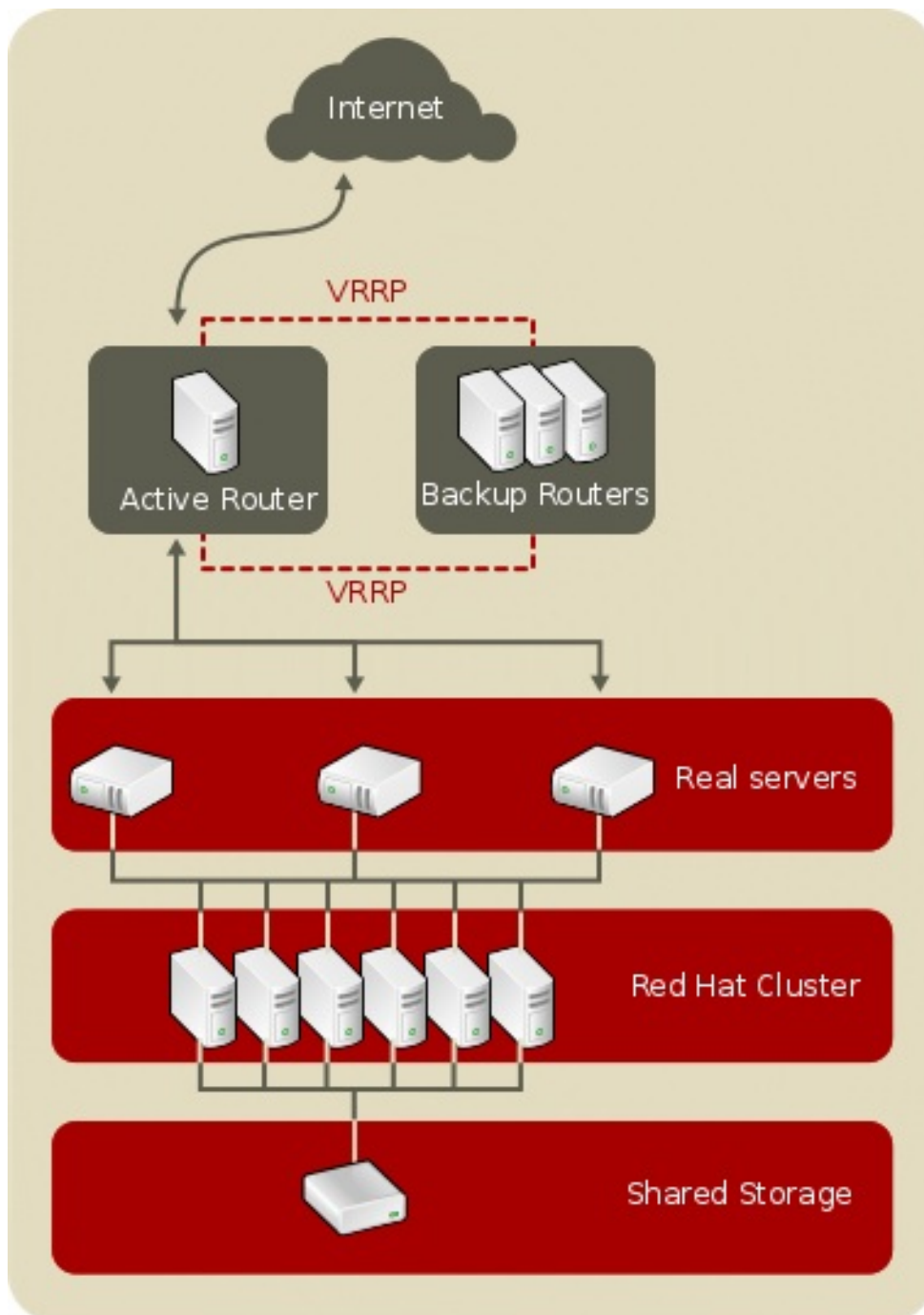


Figure 2.2. A Three-Tier Load Balancer Configuration

This configuration is ideal for busy FTP servers, where accessible data is stored on a central, highly available server and accessed by each real server via an exported NFS directory or Samba share. This topology is also recommended for websites that access a central, highly available database for transactions. Additionally, using an active-active configuration with the Load Balancer Add-on, administrators can configure one high-availability cluster to serve both of these roles simultaneously.

The third tier in the above example does not have to use the Load Balancer Add-on, but failing to use a highly available solution would introduce a critical single point of failure.

2.3. keepalived Scheduling Overview

Using Keepalived provides a great deal of flexibility in distributing traffic across real servers, in part

due to the variety of scheduling algorithms supported. Load balancing is superior to less flexible methods, such as *Round-Robin DNS* where the hierarchical nature of DNS and the caching by client machines can lead to load imbalances. Additionally, the low-level filtering employed by the LVS router has advantages over application-level request forwarding because balancing loads at the network packet level causes minimal computational overhead and allows for greater scalability.

Using assigned weights gives arbitrary priorities to individual machines. Using this form of scheduling, it is possible to create a group of real servers using a variety of hardware and software combinations and the active router can evenly load each real server.

The scheduling mechanism for Keepalived is provided by a collection of kernel patches called *IP Virtual Server* or *IPVS* modules. These modules enable *layer 4 (L4)* transport layer switching, which is designed to work well with multiple servers on a single IP address.

To track and route packets to the real servers efficiently, IPVS builds an *IPVS table* in the kernel. This table is used by the active LVS router to redirect requests from a virtual server address to and returning from real servers in the pool.

2.3.1. Keepalived Scheduling Algorithms

The structure that the IPVS table takes depends on the scheduling algorithm that the administrator chooses for any given virtual server. To allow for maximum flexibility in the types of services you can cluster and how these services are scheduled, Keepalived supports the following scheduling algorithms listed below.

Round-Robin Scheduling

Distributes each request sequentially around the pool of real servers. Using this algorithm, all the real servers are treated as equals without regard to capacity or load. This scheduling model resembles round-robin DNS but is more granular due to the fact that it is network-connection based and not host-based. Load Balancer round-robin scheduling also does not suffer the imbalances caused by cached DNS queries.

Weighted Round-Robin Scheduling

Distributes each request sequentially around the pool of real servers but gives more jobs to servers with greater capacity. Capacity is indicated by a user-assigned weight factor, which is then adjusted upward or downward by dynamic load information.

Weighted round-robin scheduling is a preferred choice if there are significant differences in the capacity of real servers in the pool. However, if the request load varies dramatically, the more heavily weighted server may answer more than its share of requests.

Least-Connection

Distributes more requests to real servers with fewer active connections. Because it keeps track of live connections to the real servers through the IPVS table, least-connection is a type of dynamic scheduling algorithm, making it a better choice if there is a high degree of variation in the request load. It is best suited for a real server pool where each member node has roughly the same capacity. If a group of servers have different capabilities, weighted least-connection scheduling is a better choice.

Weighted Least-Connections

Distributes more requests to servers with fewer active connections relative to their capacities. Capacity is indicated by a user-assigned weight, which is then adjusted upward or downward by dynamic load information. The addition of weighting makes this algorithm ideal when the real server pool contains hardware of varying capacity.

Locality-Based Least-Connection Scheduling

Distributes more requests to servers with fewer active connections relative to their destination IPs. This algorithm is designed for use in a proxy-cache server cluster. It routes the packets for an IP address to the server for that address unless that server is above its capacity and has a server in its half load, in which case it assigns the IP address to the least loaded real server.

Locality-Based Least-Connection Scheduling with Replication Scheduling

Distributes more requests to servers with fewer active connections relative to their destination IPs. This algorithm is also designed for use in a proxy-cache server cluster. It differs from Locality-Based Least-Connection Scheduling by mapping the target IP address to a subset of real server nodes. Requests are then routed to the server in this subset with the lowest number of connections. If all the nodes for the destination IP are above capacity, it replicates a new server for that destination IP address by adding the real server with the least connections from the overall pool of real servers to the subset of real servers for that destination IP. The most loaded node is then dropped from the real server subset to prevent over-replication.

Destination Hash Scheduling

Distributes requests to the pool of real servers by looking up the destination IP in a static hash table. This algorithm is designed for use in a proxy-cache server cluster.

Source Hash Scheduling

Distributes requests to the pool of real servers by looking up the source IP in a static hash table. This algorithm is designed for LVS routers with multiple firewalls.

Shortest Expected Delay

Distributes connection requests to the server that has the shortest delay expected based on number of connections on a given server divided by its assigned weight.

Never Queue

A two-pronged scheduler that first finds and sends connection requests to a server that is idling, or has no connections. If there are no idling servers, the scheduler defaults to the server that has the least delay in the same manner as *Shortest Expected Delay*.

2.3.2. Server Weight and Scheduling

The administrator of Load Balancer can assign a *weight* to each node in the real server pool. This weight is an integer value which is factored into any *weight-aware* scheduling algorithms (such as weighted least-connections) and helps the LVS router more evenly load hardware with different capabilities.

Weights work as a ratio relative to one another. For instance, if one real server has a weight of 1 and the other server has a weight of 5, then the server with a weight of 5 gets 5 connections for every 1 connection the other server gets. The default value for a real server weight is 1.

Although adding weight to varying hardware configurations in a real server pool can help load-balance the cluster more efficiently, it can cause temporary imbalances when a real server is introduced to the real server pool and the virtual server is scheduled using weighted least-connections. For example, suppose there are three servers in the real server pool. Servers A and B

are weighted at 1 and the third, server C, is weighted at 2. If server C goes down for any reason, servers A and B evenly distributes the abandoned load. However, once server C comes back online, the LVS router sees it has zero connections and floods the server with all incoming requests until it is on par with servers A and B.

2.4. Routing Methods

Red Hat Enterprise Linux uses *Network Address Translation (NAT routing)* or direct routing for Keepalived. This allows the administrator tremendous flexibility when utilizing available hardware and integrating the Load Balancer into an existing network.

2.4.1. NAT Routing

[Figure 2.3, “Load Balancer Implemented with NAT Routing”](#), illustrates Load Balancer utilizing NAT routing to move requests between the Internet and a private network.

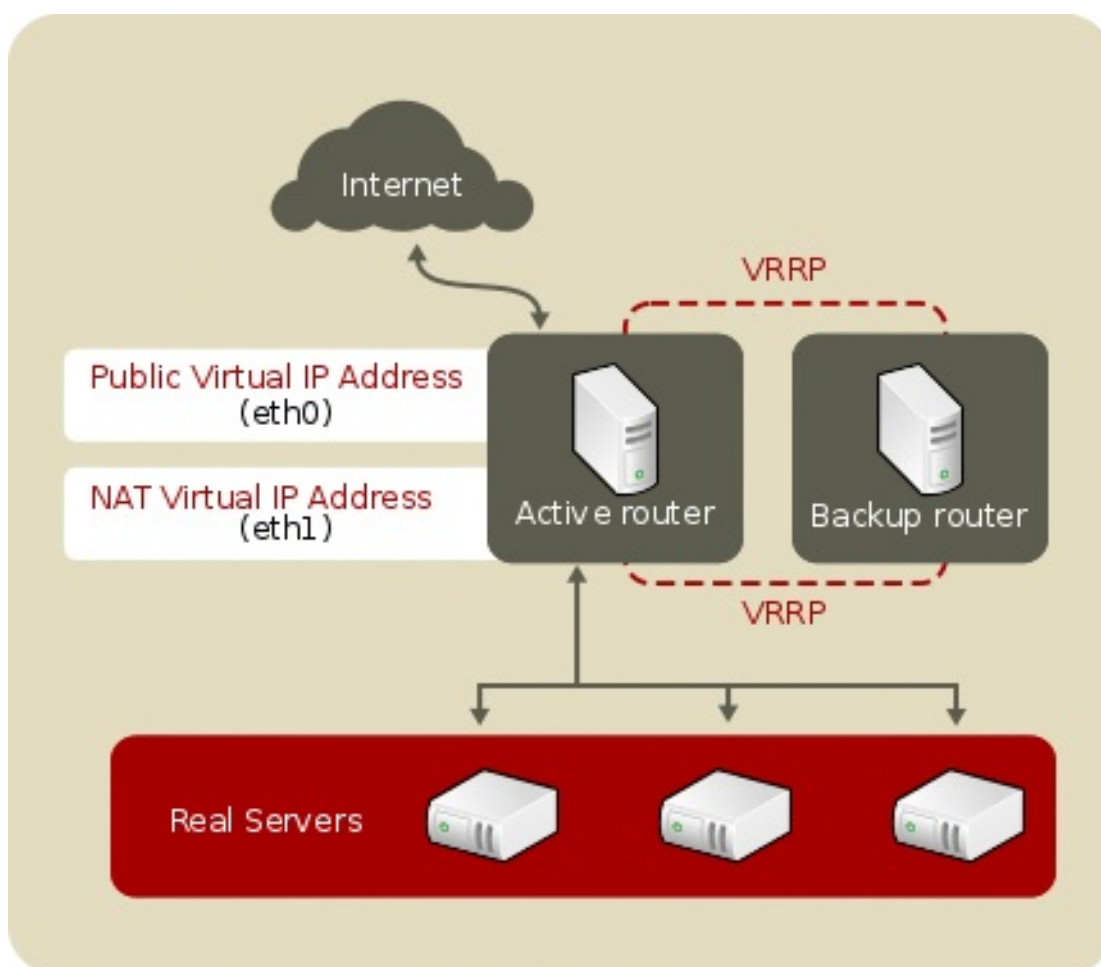


Figure 2.3. Load Balancer Implemented with NAT Routing

In the example, there are two NICs in the active LVS router. The NIC for the Internet has a *real IP address* and a floating IP address on eth0. The NIC for the private network interface has a real IP address and a floating IP address on eth1. In the event of failover, the virtual interface facing the Internet and the private facing virtual interface are taken-over by the backup LVS router simultaneously. All of the real servers located on the private network use the floating IP for the NAT router as their default route to communicate with the active LVS router so that their abilities to respond to requests from the Internet is not impaired.

In this example, the LVS router's public floating IP address and private NAT floating IP address are assigned to physical NICs. While it is possible to associate each floating IP address to its own physical device on the LVS router nodes, having more than two NICs is not a requirement.

Using this topology, the active LVS router receives the request and routes it to the appropriate server. The real server then processes the request and returns the packets to the LVS router which uses network address translation to replace the address of the real server in the packets with the LVS router's public VIP address. This process is called *IP masquerading* because the actual IP addresses of the real servers is hidden from the requesting clients.

Using this NAT routing, the real servers may be any kind of machine running various operating systems. The main disadvantage is that the LVS router may become a bottleneck in large cluster deployments because it must process outgoing as well as incoming requests.

2.4.2. Direct Routing

Building a Load Balancer setup that uses direct routing provides increased performance benefits compared to other Load Balancer networking topologies. Direct routing allows the real servers to process and route packets directly to a requesting user rather than passing all outgoing packets through the LVS router. Direct routing reduces the possibility of network performance issues by relegating the job of the LVS router to processing incoming packets only.

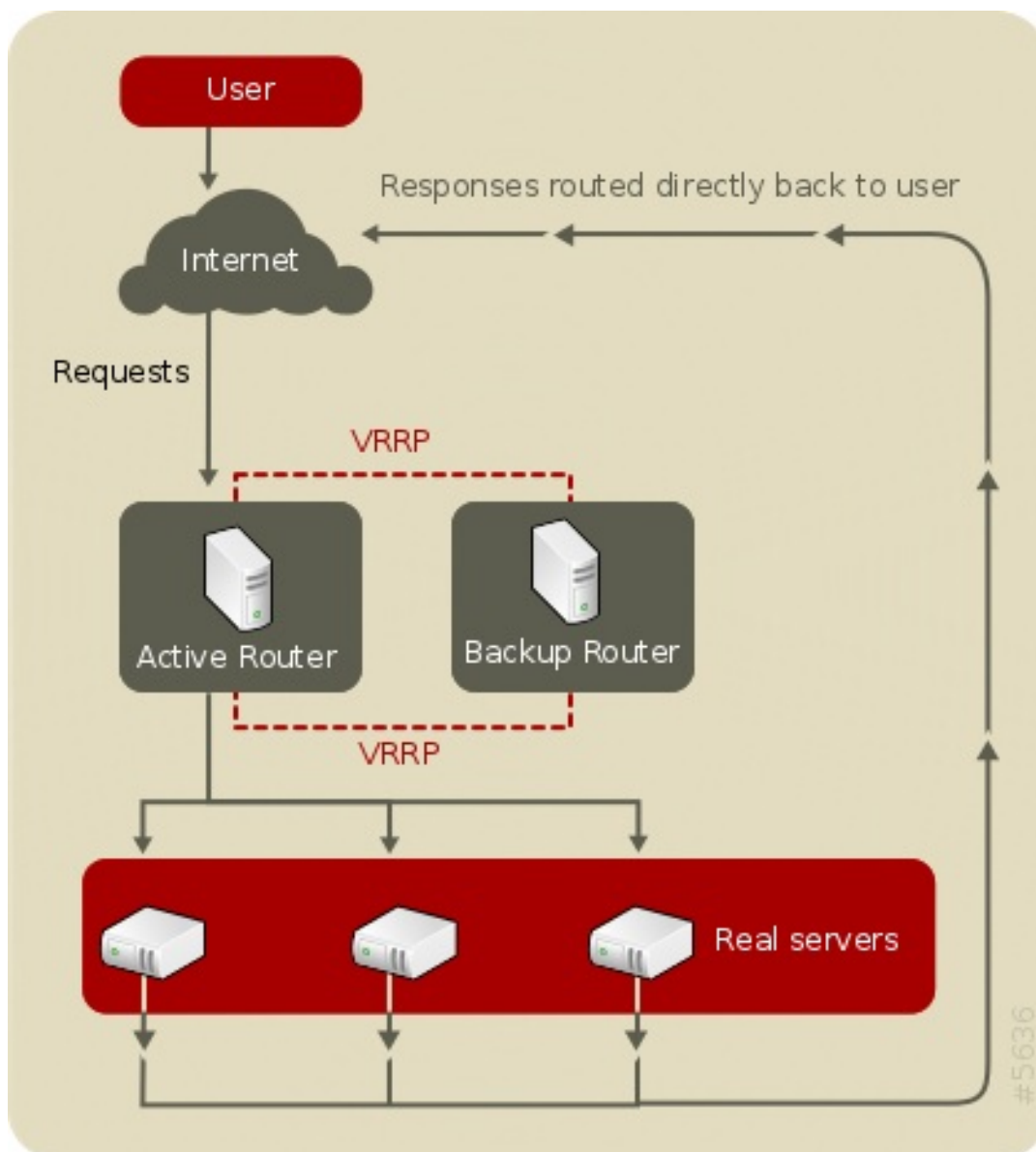


Figure 2.4. Load Balancer Implemented with Direct Routing

In the typical direct routing Load Balancer setup, the LVS router receives incoming server requests through the virtual IP (VIP) and uses a scheduling algorithm to route the request to the real servers. The real server processes the request and sends the response directly to the client, bypassing the LVS router. This method of routing allows for scalability in that real servers can be added without the added burden on the LVS router to route outgoing packets from the real server to the client, which can become a bottleneck under heavy network load.

2.4.2.1. Direct Routing and the ARP Limitation

While there are many advantages to using direct routing in Load Balancer, there are limitations as well. The most common issue with Load Balancer via direct routing is with *Address Resolution Protocol* (ARP).

In typical situations, a client on the Internet sends a request to an IP address. Network routers typically send requests to their destination by relating IP addresses to a machine's MAC address with ARP. ARP requests are broadcast to all connected machines on a network, and the machine with the correct IP/MAC address combination receives the packet. The IP/MAC associations are stored in an ARP cache, which is cleared periodically (usually every 15 minutes) and refilled with IP/MAC associations.

The issue with ARP requests in a direct routing Load Balancer setup is that because a client request to an IP address must be associated with a MAC address for the request to be handled, the virtual IP address of the Load Balancer system must also be associated to a MAC as well. However, since both the LVS router and the real servers all have the same VIP, the ARP request will be broadcast to all the machines associated with the VIP. This can cause several problems, such as the VIP being associated directly to one of the real servers and processing requests directly, bypassing the LVS router completely and defeating the purpose of the Load Balancer setup.

To solve this issue, ensure that the incoming requests are always sent to the LVS router rather than one of the real servers. This can be done by using either the `arptables_jf` or the `iptables` packet filtering tool for the following reasons:

- » The `arptables_jf` prevents ARP from associating VIPs with real servers.
- » The `iptables` method completely sidesteps the ARP problem by not configuring VIPs on real servers in the first place.

2.5. Persistence and Firewall Marks with Keepalived

In certain situations, it may be desirable for a client to reconnect repeatedly to the same real server, rather than have a load balancing algorithm send that request to the best available server. Examples of such situations include multi-screen web forms, cookies, SSL, and FTP connections. In these cases, a client may not work properly unless the transactions are being handled by the same server to retain context. Keepalived provides two different features to handle this: *persistence* and *firewall marks*.

2.5.1. Persistence

When enabled, persistence acts like a timer. When a client connects to a service, Load Balancer remembers the last connection for a specified period of time. If that same client IP address connects again within that period, it is sent to the same server it connected to previously — bypassing the load-balancing mechanisms. When a connection occurs outside the time window, it is handled according to the scheduling rules in place.

Persistence also allows the administrator to specify a subnet mask to apply to the client IP address test as a tool for controlling what addresses have a higher level of persistence, thereby grouping connections to that subnet.

Grouping connections destined for different ports can be important for protocols which use more than one port to communicate, such as FTP. However, persistence is not the most efficient way to deal with the problem of grouping together connections destined for different ports. For these situations, it is best to use *firewall marks*.

2.5.2. Firewall Marks

Firewall marks are an easy and efficient way to a group ports used for a protocol or group of related protocols. For instance, if Load Balancer is deployed to run an e-commerce site, firewall marks can be used to bundle HTTP connections on port 80 and secure, HTTPS connections on port 443. By assigning the same firewall mark to the virtual server for each protocol, state information for the transaction can be preserved because the LVS router forwards all requests to the same real server after a connection is opened.

Because of its efficiency and ease-of-use, administrators of Load Balancer should use firewall marks instead of persistence whenever possible for grouping connections. However, administrators should still add persistence to the virtual servers in conjunction with firewall marks to ensure the clients are reconnected to the same server for an adequate period of time.

Chapter 3. Setting Up Load Balancer Prerequisites for Keepalived

Load Balancer using Keepalived consists of two basic groups: the LVS routers and the real servers. To prevent a single point of failure, each group should contain at least two member systems.

The LVS router group should consist of two identical or very similar systems running Red Hat Enterprise Linux. One will act as the active LVS router while the other stays in hot standby mode, so they need to have as close to the same capabilities as possible.

Before choosing and configuring the hardware for the real server group, determine which of the three Load Balancer topologies to use.

3.1. The NAT Load Balancer Network

The NAT topology allows for great latitude in utilizing existing hardware, but it is limited in its ability to handle large loads because all packets going into and coming out of the pool pass through the Load Balancer router.

Network Layout

The topology for Load Balancer using NAT routing is the easiest to configure from a network layout perspective because only one access point to the public network is needed. The real servers pass all requests back through the LVS router so they are on their own private network.

Hardware

The NAT topology is the most flexible in regards to hardware because the real servers do not need to be Linux machines to function correctly. In a NAT topology, each real server only needs one NIC since it will only be responding to the LVS router. The LVS routers, on the other hand, need two NICs each to route traffic between the two networks. Because this topology creates a network bottleneck at the LVS router, gigabit Ethernet NICs can be employed on each LVS router to increase the bandwidth the LVS routers can handle. If gigabit Ethernet is employed on the LVS routers, any switch connecting the real servers to the LVS routers must have at least two gigabit Ethernet ports to handle the load efficiently.

Software

Because the NAT topology requires the use of **iptables** for some configurations, there can be a fair amount of software configuration outside of Keepalived. In particular, FTP services and the use of firewall marks requires extra manual configuration of the LVS routers to route requests properly.

3.1.1. Configuring Network Interfaces for Load Balancer with NAT

To set up Load Balancer with NAT, you must first configure the network interfaces for the public network and the private network on the LVS routers. In this example, the LVS routers' public interfaces (**eth0**) will be on the 192.168.26/24 network (This is not a routable IP, but assume there is a firewall in front of the LVS router) and the private interfaces which link to the real servers (**eth1**) will be on the 10.11.12/24 network.



Important

Note that editing of the following files pertain to the **network** service and the Load Balancer is not compatible with the **NetworkManager** service.

So on the active or *primary* LVS router node, the public interface's network script, `/etc/sysconfig/network-scripts/ifcfg-eth0`, could look something like this:

```
DEVICE=eth0
BOOTPROTO=static
ONBOOT=yes
IPADDR=192.168.26.9
NETMASK=255.255.255.0
GATEWAY=192.168.26.254
```

The `/etc/sysconfig/network-scripts/ifcfg-eth1` for the private NAT interface on the LVS router could look something like this:

```
DEVICE=eth1
BOOTPROTO=static
ONBOOT=yes
IPADDR=10.11.12.9
NETMASK=255.255.255.0
```

In this example, the VIP for the LVS router's public interface will be 192.168.26.10 and the VIP for the NAT or private interface will be 10.11.12.10. So, it is essential that the real servers route requests back to the VIP for the NAT interface.



Important

The sample Ethernet interface configuration settings in this section are for the real IP addresses of an LVS router and *not* the floating IP addresses.

After configuring the primary LVS router node's network interfaces, configure the backup LVS router's real network interfaces — taking care that none of the IP address conflict with any other IP addresses on the network.



Important

Be sure each interface on the backup node services the same network as the interface on primary node. For instance, if eth0 connects to the public network on the primary node, it must also connect to the public network on the backup node as well.

3.1.2. Routing on the Real Servers

The most important thing to remember when configuring the real servers network interfaces in a NAT topology is to set the gateway for the NAT floating IP address of the LVS router. In this example, that address is 10.11.12.10.



Note

Once the network interfaces are up on the real servers, the machines will be unable to ping or connect in other ways to the public network. This is normal. You will, however, be able to ping the real IP for the LVS router's private interface, in this case 10.11.12.9.

So the real server's `/etc/sysconfig/network-scripts/ifcfg-eth0` file could look similar to this:

```
DEVICE=eth0
ONBOOT=yes
BOOTPROTO=static
IPADDR=10.11.12.1
NETMASK=255.255.255.0
GATEWAY=10.11.12.10
```



Warning

If a real server has more than one network interface configured with a **GATEWAY=** line, the first one to come up will get the gateway. Therefore if both **eth0** and **eth1** are configured and **eth1** is used for Load Balancer, the real servers may not route requests properly.

It is best to turn off extraneous network interfaces by setting **ONBOOT=no** in their network scripts within the `/etc/sysconfig/network-scripts/` directory or by making sure the gateway is correctly set in the interface which comes up first.

3.1.3. Enabling NAT Routing on the LVS Routers

In a simple NAT Load Balancer configuration where each clustered service uses only one port, like HTTP on port 80, the administrator needs only to enable packet forwarding on the LVS routers for the requests to be properly routed between the outside world and the real servers. However, more configuration is necessary when the clustered services require more than one port to go to the same real server during a user session.

Once forwarding is enabled on the LVS routers and the real servers are set up and have the clustered services running, use the **keepalived** to configure IP information.



Warning

Do not configure the floating IP for **eth0** or **eth1** by manually editing network scripts or using a network configuration tool. Instead, configure them via **keepalived.conf** file.

When finished, start the **keepalived** service. Once it is up and running, the active LVS router will begin routing requests to the pool of real servers.

3.2. Load Balancer via Direct Routing

Direct routing allows real servers to process and route packets directly to a requesting user rather than passing outgoing packets through the LVS router. Direct routing requires that the real servers be physically connected to a network segment with the LVS router and be able to process and direct outgoing packets as well.

Network Layout

In a direct routing Load Balancer setup, the LVS router needs to receive incoming requests and route them to the proper real server for processing. The real servers then need to *directly* route the response to the client. So, for example, if the client is on the Internet, and sends the packet through the LVS router to a real server, the real server must be able to go directly to the client via the Internet. This can be done by configuring a gateway for the real server to pass packets to the Internet. Each real server in the server pool can have its own separate gateway (and each gateway with its own connection to the Internet), allowing for maximum throughput and scalability. For typical Load Balancer setups, however, the real servers can communicate through one gateway (and therefore one network connection).

Hardware

The hardware requirements of a Load Balancer system using direct routing is similar to other Load Balancer topologies. While the LVS router needs to be running Red Hat Enterprise Linux to process the incoming requests and perform load-balancing for the real servers, the real servers do not need to be Linux machines to function correctly. The LVS routers need one or two NICs each (depending on if there is a back-up router). You can use two NICs for ease of configuration and to distinctly separate traffic — incoming requests are handled by one NIC and routed packets to real servers on the other.

Since the real servers bypass the LVS router and send outgoing packets directly to a client, a gateway to the Internet is required. For maximum performance and availability, each real server can be connected to its own separate gateway which has its own dedicated connection to the carrier network to which the client is connected (such as the Internet or an intranet).

Software

There is some configuration outside of **keepalived** that needs to be done, especially for administrators facing ARP issues when using Load Balancer via direct routing. Refer to [Section 3.2.1, “Direct Routing and **arptables_jf**”](#) or [Section 3.2.2, “Direct Routing and **iptables**”](#) for more information.

3.2.1. Direct Routing and **arptables_jf**

In order to configure direct routing using **arptables_jf**, each real server must have their virtual IP address configured, so they can directly route packets. ARP requests for the VIP are ignored entirely by the real servers, and any ARP packets that might otherwise be sent containing the VIPs are mangled to contain the real server's IP instead of the VIPs.

Using the **arptables_jf** method, applications may bind to each individual VIP or port that the real server is servicing. For example, the **arptables_jf** method allows multiple instances of Apache HTTP Server to be running bound explicitly to different VIPs on the system. There are also significant performance advantages to using **arptables_jf** over the **iptables** option.

However, using the **arptables_jf** method, VIPs can not be configured to start on boot using standard Red Hat Enterprise Linux system configuration tools.

To configure each real server to ignore ARP requests for each virtual IP addresses, perform the following steps:

1. Create the ARP table entries for each virtual IP address on each real server (the `real_ip` is the IP the director uses to communicate with the real server; often this is the IP bound to `eth0`):

```
arptables -A IN -d <virtual_ip> -j DROP
arptables -A OUT -s <virtual_ip> -j mangle --mangle-ip-s <real_ip>
```

This will cause the real servers to ignore all ARP requests for the virtual IP addresses, and change any outgoing ARP responses which might otherwise contain the virtual IP so that they contain the real IP of the server instead. The only node that should respond to ARP requests for any of the VIPs is the current active LVS node.

2. Once this has been completed on each real server, save the ARP table entries by typing the following commands on each real server:

```
service arptables_jf save
```

```
chkconfig --level 2345 arptables_jf on
```

The `chkconfig` command will cause the system to reload the arptables configuration on bootup — before the network is started.

3. Configure the virtual IP address on all real servers using `ip addr` to create an IP alias. For example:

```
# ip addr add 192.168.76.24 dev eth0
```

4. Configure Keepalived for Direct Routing. This can be done by adding `lb_kind DR` to the `keepalived.conf` file. Refer to [Chapter 4, Initial Load Balancer Configuration with Keepalived](#) for more information.

3.2.2. Direct Routing and iptables

You may also work around the ARP issue using the direct routing method by creating `iptables` firewall rules. To configure direct routing using `iptables`, you must add rules that create a transparent proxy so that a real server will service packets sent to the VIP address, even though the VIP address does not exist on the system.

The `iptables` method is simpler to configure than the `arptables_jf` method. This method also circumvents the LVS ARP issue entirely, because the virtual IP address(es) only exist on the active LVS director.

However, there are performance issues using the `iptables` method compared to `arptables_jf`, as there is overhead in forwarding/masquerading every packet.

You also cannot reuse ports using the `iptables` method. For example, it is not possible to run two separate Apache HTTP Server services bound to port 80, because both must bind to `INADDR_ANY` instead of the virtual IP addresses.

To configure direct routing using the `iptables` method, perform the following steps:

1. On each real server, run the following command for every VIP, port, and protocol (TCP or UDP) combination intended to be serviced for the real server:

```
iptables -t nat -A PREROUTING -p <tcp|udp> -d <vip> --dport <port> -j REDIRECT
```

This command will cause the real servers to process packets destined for the VIP and port that they are given.

2. Save the configuration on each real server:

```
# service iptables save
# chkconfig --level 2345 iptables on
```

The commands above cause the system to reload the **iptables** configuration on bootup — before the network is started.

3.2.3. Direct Routing and `sysctl`

Another way to deal with the ARP limitation when employing Direct Routing is using the **sysctl** interface. Administrators can configure two **sysctl** settings such that the real server will not announce the VIP in ARP requests and will not reply to ARP requests for the VIP address. To enable this, run the following commands:

```
echo 1 > /proc/sys/net/ipv4/conf/eth0/arp_ignore
echo 2 > /proc/sys/net/ipv4/conf/eth0/arp_announce
```

Alternatively, you may add the following lines to `/etc/sysctl.d/arp.conf`:

```
net.ipv4.conf.eth0.arp_ignore = 1
net.ipv4.conf.eth0.arp_announce = 2
```

3.3. Putting the Configuration Together

After determining which of the preceding routing methods to use, the hardware should be linked together on the network.



Important

The adapter devices on the LVS routers must be configured to access the same networks. For instance if **eth0** connects to public network and **eth1** connects to the private network, then these same devices on the backup LVS router must connect to the same networks.

Also the gateway listed in the first interface to come up at boot time is added to the routing table and subsequent gateways listed in other interfaces are ignored. This is especially important to consider when configuring the real servers.

After physically connecting together the hardware, configure the network interfaces on the primary and backup LVS routers. This can be done using a graphical application such as **system-config-network** or by editing the network scripts manually. For more information about adding devices using **system-config-network**, see the chapter titled *Network Configuration* in the *Red Hat Enterprise Linux Deployment Guide*.

3.3.1. General Load Balancer Networking Tips

Configure the real IP addresses for both the public and private networks on the LVS routers before attempting to configure Load Balancer using Keepalived. The sections on each topology give example network addresses, but the actual network addresses are needed. Below are some useful commands for bringing up network interfaces or checking their status.

Bringing Up Real Network Interfaces

To bring up a real network interface, use the following command as root, replacing *N* with the number corresponding to the interface (**eth0** and **eth1**).

```
/usr/sbin/ifup ethN
```



Warning

Do *not* use the **ifup** scripts to bring up any floating IP addresses you may configure using Keepalived (**eth0 : 1** or **eth1 : 1**). Use the **service** or **systemctl** command to start **keepalived** instead.

Bringing Down Real Network Interfaces

To bring down a real network interface, use the following command as root, replacing *N* with the number corresponding to the interface (**eth0** and **eth1**).

```
/usr/sbin/ifdown ethN
```

Checking the Status of Network Interfaces

If you need to check which network interfaces are up at any given time, type the following:

```
/usr/sbin/ifconfig
```

To view the routing table for a machine, issue the following command:

```
/usr/sbin/route
```

3.4. Multi-port Services and Load Balancer

LVS routers under any topology require extra configuration when creating multi-port Load Balancer services. Multi-port services can be created artificially by using firewall marks to bundle together different, but related protocols, such as HTTP (port 80) and HTTPS (port 443), or when Load Balancer is used with true multi-port protocols, such as FTP. In either case, the LVS router uses firewall marks to recognize that packets destined for different ports, but bearing the same firewall mark, should be handled identically. Also, when combined with persistence, firewall marks ensure connections from the client machine are routed to the same host, as long as the connections occur within the length of time specified by the persistence parameter.

Unfortunately, the mechanism used to balance the loads on the real servers — IPVS — can recognize the firewall marks assigned to a packet, but cannot itself assign firewall marks. The job of *assigning* firewall marks must be performed by the network packet filter, **iptables**.

3.4.1. Assigning Firewall Marks

To assign firewall marks to a packet destined for a particular port, the administrator must use **iptables**.

This section illustrates how to bundle HTTP and HTTPS as an example; however, FTP is another commonly clustered multi-port protocol.

The basic rule to remember when using firewall marks is that for every protocol using a firewall mark in Keepalived there must be a commensurate **iptables** rule to assign marks to the network packets.

Before creating network packet filter rules, make sure there are no rules already in place. To do this, open a shell prompt, login as root, and type:

```
/usr/sbin/service iptables status
```

If **iptables** is not running, the prompt will instantly reappear.

If **iptables** is active, it displays a set of rules. If rules are present, type the following command:

```
/sbin/service iptables stop
```

If the rules already in place are important, check the contents of `/etc/sysconfig/iptables` and copy any rules worth keeping to a safe place before proceeding.

The first load balancer related configuring firewall rules is to allow VRRP traffic for the Keepalived service to function.

```
/usr/sbin/iptables -I INPUT -p vrrp -j ACCEPT
```

Below are rules which assign the same firewall mark, 80, to incoming traffic destined for the floating IP address, *n.n.n.n*, on ports 80 and 443.

```
/usr/sbin/iptables -t mangle -A PREROUTING -p tcp -d n.n.n.n/32 -m  
multiport --dports 80,443 -j MARK --set-mark 80
```

Note that you must log in as root and load the module for **iptables** before issuing rules for the first time.

In the above **iptables** commands, *n.n.n.n* should be replaced with the floating IP for your HTTP and HTTPS virtual servers. These commands have the net effect of assigning any traffic addressed to the VIP on the appropriate ports a firewall mark of 80, which in turn is recognized by IPVS and forwarded appropriately.



Warning

The commands above will take effect immediately, but do not persist through a reboot of the system.

3.5. Configuring FTP

File Transport Protocol (FTP) is an old and complex multi-port protocol that presents a distinct set of challenges to an Load Balancer environment. To understand the nature of these challenges, you must first understand some key things about how FTP works.

3.5.1. How FTP Works

With most other server client relationships, the client machine opens up a connection to the server on a particular port and the server then responds to the client on that port. When an FTP client connects

to an FTP server it opens a connection to the FTP control port 21. Then the *client* tells the FTP *server* whether to establish an *active* or *passive* connection. The type of connection chosen by the client determines how the server responds and on what ports transactions will occur.

The two types of data connections are:

Active Connections

When an active connection is established, the *server* opens a data connection to the client from port 20 to a high range port on the client machine. All data from the server is then passed over this connection.

Passive Connections

When a passive connection is established, the *client* asks the FTP server to establish a passive connection port, which can be on any port higher than 10,000. The server then binds to this high-numbered port for this particular session and relays that port number back to the client. The client then opens the newly bound port for the data connection. Each data request the client makes results in a separate data connection. Most modern FTP clients attempt to establish a passive connection when requesting data from servers.



Note

The *client* determines the type of connection, not the server. This means to effectively cluster FTP, you must configure the LVS routers to handle both active and passive connections.

The FTP client/server relationship can potentially open a large number of ports that Keepalived does not know about.

3.5.2. How This Affects Load Balancer Routing

IPVS packet forwarding only allows connections in and out of the cluster based on it recognizing its port number or its firewall mark. If a client from outside the cluster attempts to open a port IPVS is not configured to handle, it drops the connection. Similarly, if the real server attempts to open a connection back out to the Internet on a port IPVS does not know about, it drops the connection. This means *all* connections from FTP clients on the Internet *must* have the same firewall mark assigned to them and all connections from the FTP server *must* be properly forwarded to the Internet using network packet filtering rules.



Note

In order to enable passive FTP connections, ensure that you have the `ip_vs_ftp` kernel module loaded, which you can do by running the command `modprobe ip_vs_ftp` as an administrative user at a shell prompt.

3.5.3. Creating Network Packet Filter Rules

Before assigning any `iptables` rules for FTP service, review the information in [Section 3.4.1, “Assigning Firewall Marks”](#) concerning multi-port services and techniques for checking the existing network packet filtering rules.

Below are rules which assign the same firewall mark, 21, to FTP traffic.

3.5.3.1. Rules for Active Connections

The rules for active connections tell the kernel to accept and forward connections coming to the *internal* floating IP address on port 20 — the FTP data port.

The following **iptables** command allows the LVS router to accept outgoing connections from the real servers that IPVS does not know about:

```
/usr/sbin/iptables -t nat -A POSTROUTING -p tcp -s n.n.n.0/24 --sport 20 -j MASQUERADE
```

In the **iptables** command, *n.n.n* should be replaced with the first three values for the floating IP for the NAT interface's internal network interface defined *virtual_server* section of the **keepalived.conf** file.

3.5.3.2. Rules for Passive Connections

The rules for passive connections assign the appropriate firewall mark to connections coming in from the Internet to the floating IP for the service on a wide range of ports — 10,000 to 20,000.



Warning

If you are limiting the port range for passive connections, you must also configure the VSFTP server to use a matching port range. This can be accomplished by adding the following lines to **/etc/vsftpd.conf**:

```
pasv_min_port=10000
```

```
pasv_max_port=20000
```

Setting **pasv_address** to override the real FTP server address should not be used since it is updated to the virtual IP address by LVS.

For configuration of other FTP servers, consult the respective documentation.

This range should be a wide enough for most situations; however, you can increase this number to include all available non-secured ports by changing **10000 : 20000** in the commands below to **1024 : 65535**.

The following **iptables** commands have the net effect of assigning any traffic addressed to the floating IP on the appropriate ports a firewall mark of 21, which is in turn recognized by IPVS and forwarded appropriately:

```
/usr/sbin/iptables -t mangle -A PREROUTING -p tcp -d n.n.n.n/32 --dport 21 -j MARK --set-mark 21
```

```
/usr/sbin/iptables -t mangle -A PREROUTING -p tcp -d n.n.n.n/32 --dport 10000:20000 -j MARK --set-mark 21
```

In the **iptables** commands, *n.n.n.n* should be replaced with the floating IP for the FTP virtual server defined in the *virtual_server* subsection of the **keepalived.conf** file.



Warning

The commands above take effect immediately, but do not persist through a reboot of the system.

Finally, you need to be sure that the appropriate service is set to activate on the proper runlevels.

3.6. Saving Network Packet Filter Settings

After configuring the appropriate network packet filters for your situation, save the settings so they get restored after a reboot. For **iptables**, type the following command:

```
/usr/sbin/service iptables save
```

This saves the settings in **/etc/sysconfig/iptables** so they can be recalled at boot time.

Once this file is written, you are able to use the **/usr/sbin/service** command to start, stop, and check the status (using the status switch) of **iptables**. The **/usr/sbin/service** will automatically load the appropriate module for you.

Finally, you need to be sure the appropriate service is set to activate on the proper runlevels.

3.7. Turning on Packet Forwarding and Nonlocal Binding

In order for the Keepalived service to forward network packets properly to the real servers, each router node must have IP forwarding turned on in the kernel. Log in as root and change the line which reads **net.ipv4.ip_forward = 0** in **/etc/sysctl.conf** to the following:

```
net.ipv4.ip_forward = 1
```

The changes take effect when you reboot the system.

Load balancing in HAProxy also requires the ability to bind to an IP address that are *nonlocal*, meaning that it is not assigned to a device on the local system. This allows a running load balancer instance to bind to a an IP that is not local for failover.

To enable, edit the line in **/etc/sysctl.conf** that reads **net.ipv4.ip_nonlocal_bind** to the following:

```
net.ipv4.ip_nonlocal_bind = 1
```

The changes take effect when you reboot the system.

To check if IP forwarding is turned on, issue the following command as root:

```
/usr/sbin/sysctl net.ipv4.ip_forward
```

To check if nonlocal binding is turned on, issue the following command as root:

```
/usr/sbin/sysctl net.ipv4.ip_nonlocal_bind
```

If both commands the above command returns a **1**, then the respective settings are enabled.

2.8 Configuring Services on the Real Servers

3.6. Configuring Services on the Real Servers

If the real servers are Red Hat Enterprise Linux systems, set the appropriate server daemons to activate at boot time. These daemons can include **httpd** for Web services or **xinetd** for FTP or Telnet services.

It may also be useful to access the real servers remotely, so the **sshd** daemon should also be installed and running.

Chapter 4. Initial Load Balancer Configuration with Keepalived

After installing Load Balancer packages, you must take some basic steps to set up the LVS router and the real servers for use with Keepalived. This chapter covers these initial steps in detail.

4.1. A Basic Keepalived configuration

In this basic example, two systems are configured as load balancers. LB1 (Active) and LB2 (Backup) will be routing requests for a pool of four Web servers running **httpd** with real IP addresses numbered 191.168.1.20 to 192.168.1.24, sharing a virtual IP address of 192.168.1.11. Each load balancer has two interfaces (**eth0** and **eth1**), one for handling external Internet traffic, and the other for routing requests to the real servers. The load balancing algorithm used is Round Robin and the routing method will be Network Address Translation.

4.1.1. Creating the `keepalived.conf` file

Keepalived is configured via the `keepalived.conf` file. To create a load balancer topology like the example shown in [Section 4.1, “A Basic Keepalived configuration”](#), use a text editor to open `keepalived.conf`. For example:

```
vi /etc/keepalived/keepalived.conf
```

A basic load balanced system with the configuration as detailed in [Section 4.1, “A Basic Keepalived configuration”](#) has a `keepalived.conf` file as explained in the following code sections.

4.1.1.1. Global Definitions

The Global Definitions section of the `keepalived.conf` file allows administrators to specify notification details when changes to the load balancer occurs. Note that the Global Definitions are optional and are not required for Keepalived configuration.

```
global_defs {
    notification_email {
        admin@example.com
    }
    notification_email_from noreply@example.com
    smtp_server 127.0.0.1
    smtp_connect_timeout 60
}
```

The `notification_email` is the administrator of the load balancer, while the `notification_email_from` is an address that sends the load balancer state changes. The SMTP specific configuration specifies the mail server from which the notifications are mailed.

4.1.1.2. VRRP Instance

```

vrrp_sync_group VG1 {
    group {
        RH_EXT
        RH_INT
    }
}

vrrp_instance RH_EXT {
    state MASTER
    interface eth0
    virtual_router_id 50
    priority 100
    advert_int 1
    authentication {
        auth_type PASS
    }
    auth_pass password123
    virtual_ipaddress {
        10.0.0.1
    }
}

vrrp_instance RH_INT {
    state MASTER
    interface eth1
    virtual_router_id 2
    priority 100
    advert_int 1
    authentication {
        auth_type PASS
        auth_pass password123
    }
    virtual_ipaddress {
        192.168.1.1
    }
}

```

In this example, the **vrrp_sync_group** stanza defines the VRRP group that stays together through any state changes (such as failover). In this example, there is an instance defined for the external interface that communicates with the Internet (RH_EXT), as well as one for the internal interface (RH_INT).

The **vrrp_instance RH1** line details the virtual interface configuration for the VRRP service daemon, which creates virtual IP instances. The **state MASTER** designates the active server; the backup server in the configuration would have an equivalent configuration as above but be configured as **state BACKUP**.

The **interface** parameter assigns the physical interface name to this particular virtual IP instance, and the **virtual_router_id** is a numerical identifier for the instance. The **priority 100** specifies the order in which the assigned interface to take over in a failover; the lower the number, the higher the priority.

The **authentication** block specifies the authentication type (**auth_type**) and password (**auth_pass**) used to authenticate servers for failover synchronization. **PASS** specifies password authentication; Keepalived also supports **AH**, or Authentication Headers for connection integrity.

Finally, the **virtual_ipaddress** option specifies the interface virtual IP address.

4.1.1.3. Virtual Server Definitions

```

virtual_server 192.168.1.11 80 {
    delay_loop 6
    lb_algo rr
    lb_kind NAT

    real_server 192.168.1.20 80 {
        TCP_CHECK {
            connect_timeout 10
        }
    }
    real_server 192.168.1.21 80 {
        TCP_CHECK {
            connect_timeout 10
        }
    }
    real_server 192.168.1.22 80 {
        TCP_CHECK {
            connect_timeout 10
        }
    }
    real_server 192.168.1.23 80 {
        TCP_CHECK {
            connect_timeout 10
        }
    }
}

```

In this block, the **virtual_server** is configured first with the IP address. Then a **delay_loop** configures the amount of time (in seconds) between health checks. The **lb_algo** option specifies the kind of algorithm used for availability (in this case, **rr** for Round-Robin). The **lb_kind** option determines routing method, which in this case Network Address Translation (or **nat**) is used.

After configuring the Virtual Server details, the **real_server** options are configured, again by specifying the IP Address first. The **TCP_CHECK** stanza checks for availability of the real server using TCP. The **connect_timeout** configures the time in seconds before a timeout occurs.

4.2. Keepalived Direct Routing Configuration

Direct Routing configuration of Keepalived is similar in configuration with NAT. In the following example, Keepalived is configured to provide load balancing for a group of real servers running HTTP on port 80. To configure Direct Routing, change the **lb_kind** parameter to **DR**. Other configuration options are discussed in [Section 4.1, “A Basic Keepalived configuration”](#).

```

global_defs {
    notification_email {
        admin@example.com
    }
    notification_email_from noreply_admin@example.com
    smtp_server 127.0.0.1
}

```



```
smtp_connect_timeout 60
}

vrrp_instance RH_1 {
    state MASTER
    interface eth0
    virtual_router_id 50
    priority 1
    advert_int 1
    authentication {
        auth_type PASS
        auth_pass password123
    }
    virtual_ipaddress {
        172.31.0.1
    }
}

virtual_server 172.31.0.1 80
    delay_loop 10
    lb_algo rr
    lb_kind DR
    persistence_timeout 9600
    protocol TCP

    real_server 192.168.0.1 80 {
        weight 1
        TCP_CHECK {
            connect_timeout 10
            connect_port 80
        }
    }
    real_server 192.168.0.2 80 {
        weight 1
        TCP_CHECK {
            connect_timeout 10
            connect_port 80
        }
    }
    real_server 192.168.0.3 80 {
        weight 1
        TCP_CHECK {
            connect_timeout 10
            connect_port 80
        }
    }
}
```

4.3. Starting the service

Start the service by running the following command:

```
systemctl start keepalived.service
```

To make Keepalived service persist through reboots, run the following command:

```
systemctl enable keepalived.service
```

Chapter 5. HAProxy Configuration

This chapter explains the configuration of a basic setup that highlights the common configuration options an administrator could encounter when deploying HAProxy services for high availability environments.

HAProxy has its own set of scheduling algorithms for load balancing. These algorithms are described in [Section 5.1, “HAProxy Scheduling Algorithms”](#).

HAProxy is configured by editing the `/etc/haproxy/haproxy.cfg` file.

Load Balancer configuration using HAProxy consists of five sections for configuration:

- ✦ [Section 5.2, “*global* Settings”](#)
- ✦ The proxies section, which consists of 4 subsections:
 - The [Section 5.3, “*default* Settings”](#) settings
 - The [Section 5.4, “*frontend* Settings”](#) settings
 - The [Section 5.5, “*backend* Settings”](#) settings

5.1. HAProxy Scheduling Algorithms

The HAProxy scheduling algorithms for load balancing can be edited in the ***balance*** parameter in the ***backend*** section of the `/etc/haproxy/haproxy.cfg` configuration file. Note that HAProxy supports configuration with multiple backends, and each backend can be configured with a scheduling algorithm.

Round-Robin (roundrobin)

Distributes each request sequentially around the pool of real servers. Using this algorithm, all the real servers are treated as equals without regard to capacity or load. This scheduling model resembles round-robin DNS but is more granular due to the fact that it is network-connection based and not host-based. Load Balancer round-robin scheduling also does not suffer the imbalances caused by cached DNS queries. However, in HAProxy, since configuration of server weights can be done on the fly using this scheduler, the number of active servers are limited to 4095 per backend.

Static Round-Robin (static-rr)

Distributes each request sequentially around a pool of real servers as does *Round-Robin*, but does not allow configuration of server weight dynamically. However, because of the static nature of server weight, there is no limitation on the number of active servers in the backend.

Least-Connection (leastconn)

Distributes more requests to real servers with fewer active connections. Administrators with a dynamic environment with varying session or connection lengths may find this scheduler a better fit for their environments. It is also ideal for an environment where a group of servers have different capacities, as administrators can adjust weight on the fly using this scheduler.

Source (source)

Distributes requests to servers by hashing requesting source IP address and dividing by

the weight of all the running servers to determine which server will get the request. In a scenario where all servers are running, the source IP request will be consistently served by the same real server. If there is a change in the number or weight of the running servers, the session may be moved to another server because the hash/weight result has changed.

URI (*uri*)

Distributes requests to servers by hashing the entire URI (or a configurable portion of a URI) and divides by the weight of all the running servers to determine which server will the request. In a scenario where all active servers are running, the source IP request will be consistently served by the same real server. This scheduler can be further configured by the length of characters at the start of a URI to computer the hash result and the depth of directories in a URI (designated by forward slashes in the URI) to compute the hash result.

URL Parameter (*url_param*)

Distributes requests to servers by looking up a particular parameter string in a source URL request and performing a hash calculation divided by the weight of all running servers. If the parameter is missing from the URL, the scheduler defaults to Round-robin scheduling. Modifiers may be used based on POST parameters as well as wait limits based on the number of maximum octets an administrator assigns to wait for a certain parameter before computing the hash result.

Header Name (*hdr*)

Distributes requests to servers by checking a particular header name in each source HTTP request and performing a hash calculation divided by the weight of all running servers. If the header is absent, the scheduler defaults to Round-robin scheduling.

RDP Cookie (*rdp-cookie*)

Distributes requests to servers by looking up the RDP cookie for every TCP request and performing a hash calculation divided by the weight of all running servers. If the header is absent, the scheduler defaults to Round-robin scheduling. This method is ideal for persistence as it maintains session integrity.

5.2. *global* Settings

The ***global*** settings configure parameters that apply to all servers running HAProxy. A typical ***global*** section may look like the following:

```
global
  log 127.0.0.1 local2
  maxconn 4000
  user haproxy
  group haproxy
  daemon
```

In the above configuration, the administrator has configured the service to ***log*** all entries to the local ***syslog*** server. By default, this could be ***/var/log/syslog*** or some user-designated location.

The ***maxconn*** parameter specifies the maximum number of concurrent connections for the service. By default, the maximum is 2000.

The ***user*** and ***group*** parameters specifies the username and groupname for which the ***haproxy*** process belongs.

Finally, the *daemon* parameter specifies that **haproxy** run as a background process.

5.3. *default* Settings

The *default* settings configure parameters that apply to all proxy subsections in a configuration (frontend, backend, and listen). A typical *default* section may look like the following:



Note

Any parameter configured in *proxy* subsection (*frontend*, *backend*, or *listen*) takes precedence over the parameter value in *default*.

```
defaults
  mode                http
  log                 global
  option              httplog
  option              dontlognull
  retries             3
  timeout http-request 10s
  timeout queue       1m
  timeout connect     10s
  timeout client      1m
  timeout server      1m
```

mode specifies the protocol for the HAProxy instance. Using the *http* mode connects source requests to real servers based on HTTP, ideal for load balancing web servers. For other applications, use the *tcp* mode.

log specifies log address and *syslog* facilities to which log entries are written. The *global* value refers the HAProxy instance to whatever is specified in the *log* parameter in the *global* section.

option httplog enables logging of various values of an HTTP session, including HTTP requests, session status, connection numbers, source address, and connection timers among other values.

option dontlognull disables logging of null connections, meaning that HAProxy will not log connections wherein no data has been transferred. This is not recommended for environments such as web applications over the Internet where null connections could indicate malicious activities such as open port-scanning for vulnerabilities.

retries specifies the number of times a real server will retry a connection request after failing to connect on the first try.

The various *timeout* values specify the number in seconds (s) or milliseconds (m) of inactivity for a given request, connection, or response. *http-request 10s* gives 10 seconds to wait for a complete HTTP request from a client. *queue 10m* sets the amount of time to wait before a connection is dropped and a client receives a 503 or "Service Unavailable" error. *connect 10s* specifies the number of seconds to wait for a successful connection to a server. *client 1m* specifies the amount of time a client can remain inactive (it neither accepts nor sends data). *server 10m* specifies the amount of time (in milliseconds) a server is given to accept or send data before timeout occurs.

5.4. *frontend* Settings

The **frontend** settings configure the servers' listening sockets for client connection requests. A typical HAProxy configuration of the **frontend** may look like the following:

```
frontend main
  bind 192.168.0.10:80
```

The **frontend** called **main** is configured to the 192.168.0.10 IP address and listening on port 80 using the **bind** parameter. Once connected, the **use backend** specifies that all sessions connect to the **app** backend.

5.5. backend Settings

The **backend** settings specify the real server IP addresses as well as the load balancer scheduling algorithm. The following example shows a typical **backend** section:

```
backend app
  balance roundrobin
  server app1 192.168.1.1:80 check
  server app2 192.168.1.2:80 check
  server app3 192.168.1.3:80 check inter 2s rise 4 fall 3
  server app4 192.168.1.4:80 backup
```

The backend server is named **app**. The **balance** specifies the load balancer scheduling algorithm to be used, which in this case is Round Robin (**roundrobin**), but can be any scheduler supported by HAProxy. For more information configuring schedulers in HAProxy, refer to [Section 5.1, "HAProxy Scheduling Algorithms"](#).

The **server** lines specify the servers available in the backend. **app1** to **app4** are the names assigned internally to each real server. Log files will specify server messages by name. The address is the assigned IP address. The value after the colon in the IP address is the port number to which the connection occurs on the particular server. The **check** option flags a server for periodic healthchecks to ensure that it is available and able receive and send data and take session requests. Server **app3** also configures the healthcheck interval to two seconds (**inter 2s**), the amount of checks **app3** has to pass to determine if the server is considered healthy (**rise 4**), and the number of times a server consecutively fails a check before it is considered failed (**fall 3**).

5.6. Starting haproxy

To start the HAProxy service, run the following command:

```
systemctl start haproxy.service
```

To make the HAProxy service persist through reboots, run the following command:

```
systemctl enable haproxy.service
```

Revision History

Revision 0.2-6	Mon Feb 16 2015	Steven Levine
Version for 7.1 GA release		
Revision 0.2-5	Thu Dec 11 2014	Steven Levine
Version for 7.1 Beta release		
Revision 0.1-15	Fri Dec 05 2014	Steven Levine
Updating to implement new sort order on the Red Hat Enterprise Linux splash page.		
Revision 0.2-4	Thu Dec 04 2014	Steven Levine
Version for 7.1 Beta release		
Revision 0.1-12	Tue Jun 03 2014	John Ha
Version for 7.0 GA Release		
Revision 0.1-6	Mon Jun 13 2013	John Ha
Build for beta of Red Hat Enterprise Linux 7		
Revision 0.1-2	Mon Jun 13 2013	John Ha
Alpha Draft for initial reaction		
Revision 0.1-1	Wed Jan 16 2013	John Ha
Branched from Red Hat Enterprise Linux 6 version of this Document		

Index

A

arptables_jf, [Direct Routing and arptables_jf](#)

D

direct routing

- and arptables_jf, [Direct Routing and arptables_jf](#)

F

FTP, [Configuring FTP](#)

- (see also Load Balancer)

H

HAProxy, [haproxy](#)

HAProxy and Keepalived, [keepalived and haproxy](#)

J

job scheduling, Keepalived , [keepalived Scheduling Overview](#)

K

Keepalived

- configuration, [A Basic Keepalived configuration](#)
- configuration file, [Creating the keepalived conf file](#)
- initial configuration, [Initial Load Balancer Configuration with Keepalived](#)
- job scheduling, [keepalived Scheduling Overview](#)
- scheduling, job, [keepalived Scheduling Overview](#)

Keepalived configuration

- Direct Routing, [Keepalived Direct Routing Configuration](#)

keepalived daemon, [keepalived](#)

keepalived.conf, [Creating the keepalived.conf file](#)

Keepalivedd

- LVS routers
 - primary node, [Initial Load Balancer Configuration with Keepalived](#)

L

least connections (see job scheduling, Keepalived)

Load Balancer

- direct routing
 - and arptables_jf, [Direct Routing and arptables_jf](#)
 - requirements, hardware, [Direct Routing, Load Balancer via Direct Routing](#)
 - requirements, network, [Direct Routing, Load Balancer via Direct Routing](#)
 - requirements, software, [Direct Routing, Load Balancer via Direct Routing](#)
- HAProxy, [haproxy](#)
- HAProxy and Keepalived, [keepalived and haproxy](#)
- Keepalived, [A Basic Keepalived configuration](#), [Keepalived Direct Routing Configuration](#)
- keepalived daemon, [keepalived](#)
- multi-port services, [Multi-port Services and Load Balancer](#)
 - FTP, [Configuring FTP](#)
- NAT routing
 - requirements, hardware, [The NAT Load Balancer Network](#)
 - requirements, network, [The NAT Load Balancer Network](#)
 - requirements, software, [The NAT Load Balancer Network](#)
- routing methods
 - NAT, [Routing Methods](#)
- routing prerequisites, [Configuring Network Interfaces for Load Balancer with NAT](#)
- three-tier
 - Load Balancer Add-on, [A Three-Tier keepalived Load Balancer Configuration](#)

Load Balancer Add-On

- packet forwarding, [Turning on Packet Forwarding and Nonlocal Binding](#)

LVS

- NAT routing
 - enabling, [Enabling NAT Routing on the LVS Routers](#)
- overview of, [Load Balancer Overview](#)
- real servers, [Load Balancer Overview](#)

M

multi-port services, [Multi-port Services and Load Balancer](#)

- (see also Load Balancer)

N**NAT**

- enabling, [Enabling NAT Routing on the LVS Routers](#)

- routing methods, Load Balancer , [Routing Methods](#)

network address translation (see NAT)

P**packet forwarding, [Turning on Packet Forwarding and Nonlocal Binding](#)**

- (see also Load Balancer Add-On)

R**real servers**

- configuring services, [Configuring Services on the Real Servers](#)

round robin (see job scheduling, Keepalived)

routing

- prerequisites for Load Balancer , [Configuring Network Interfaces for Load Balancer with NAT](#)

S

scheduling, job (Keepalived) , [keepalived Scheduling Overview](#)

W

weighted least connections (see job scheduling, Keepalived)

weighted round robin (see job scheduling, Keepalived)