



AON Lab Experience Introduction

LABAPP-1002

Floris Grandvarlet
Ryan Shuttleworth
Harald Liessmann



Cisco Networkers
2007

HOUSEKEEPING

- We value your feedback, don't forget to complete your online session evaluations after each session and complete the Overall Conference Evaluation which will be available online from Friday.
- Visit the World of Solutions on Level -01!
- Please remember this is a 'No Smoking' venue!
- Please switch off your mobile phones!
- Please remember to wear your badge at all times including the Party!
- Do you have a question? Feel free to ask them during the Q&A section or write your question on the Question form given to you and hand it to the Room Monitor when you see them holding up the Q&A sign.

AON What is it?



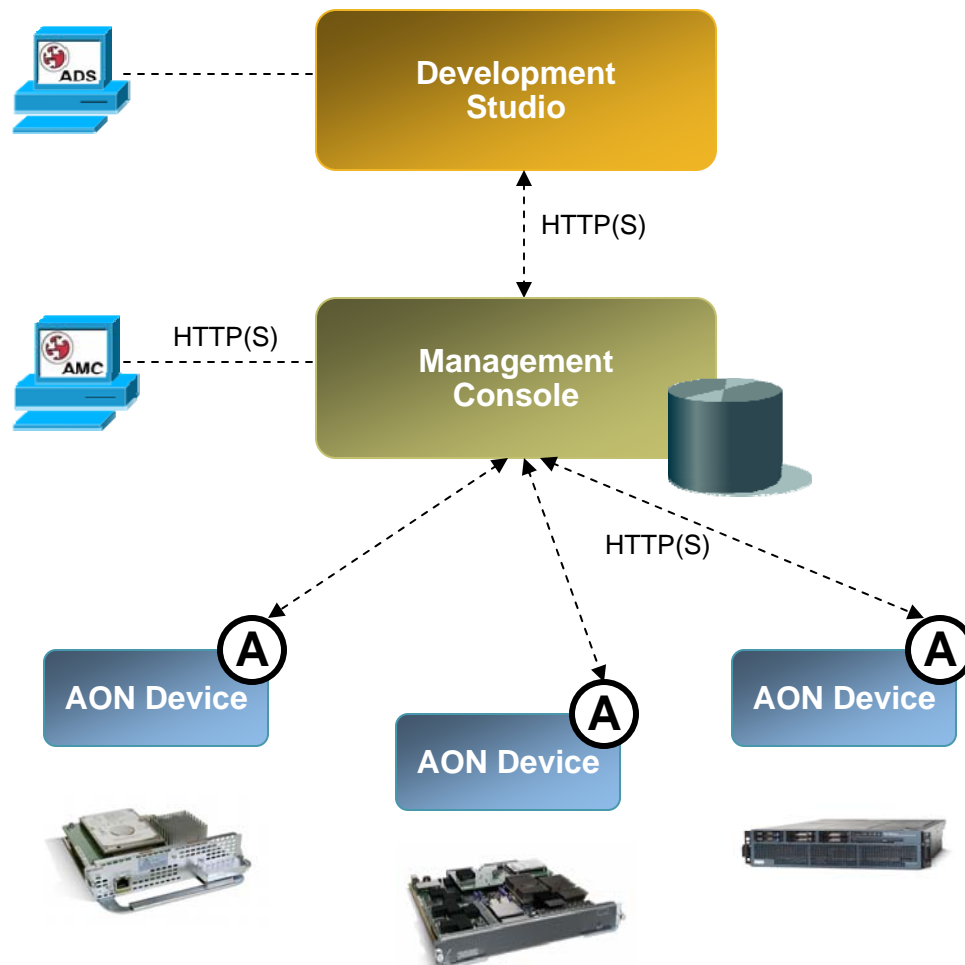
Introduction to the Technology, Terms and Tools

100,000 ft view of AON

Network device that *understands* applications

- **Translates:** One application '*language*' to another
- **Monitors:** Application '*conversations*'
- **Enforces:** How/when applications '*talk*'

AON Overview



Graphical Development

Drag-and-Drop tooling for definition of AON policy and integration rules

Manageability

Through Management Console and Management Agents, clustered monitoring and management of AON devices and policies

Flexible Form Factors

Available as Network Module for Branch, Catalyst 6500 for DataCentre and Appliance for Stand Alone Operation

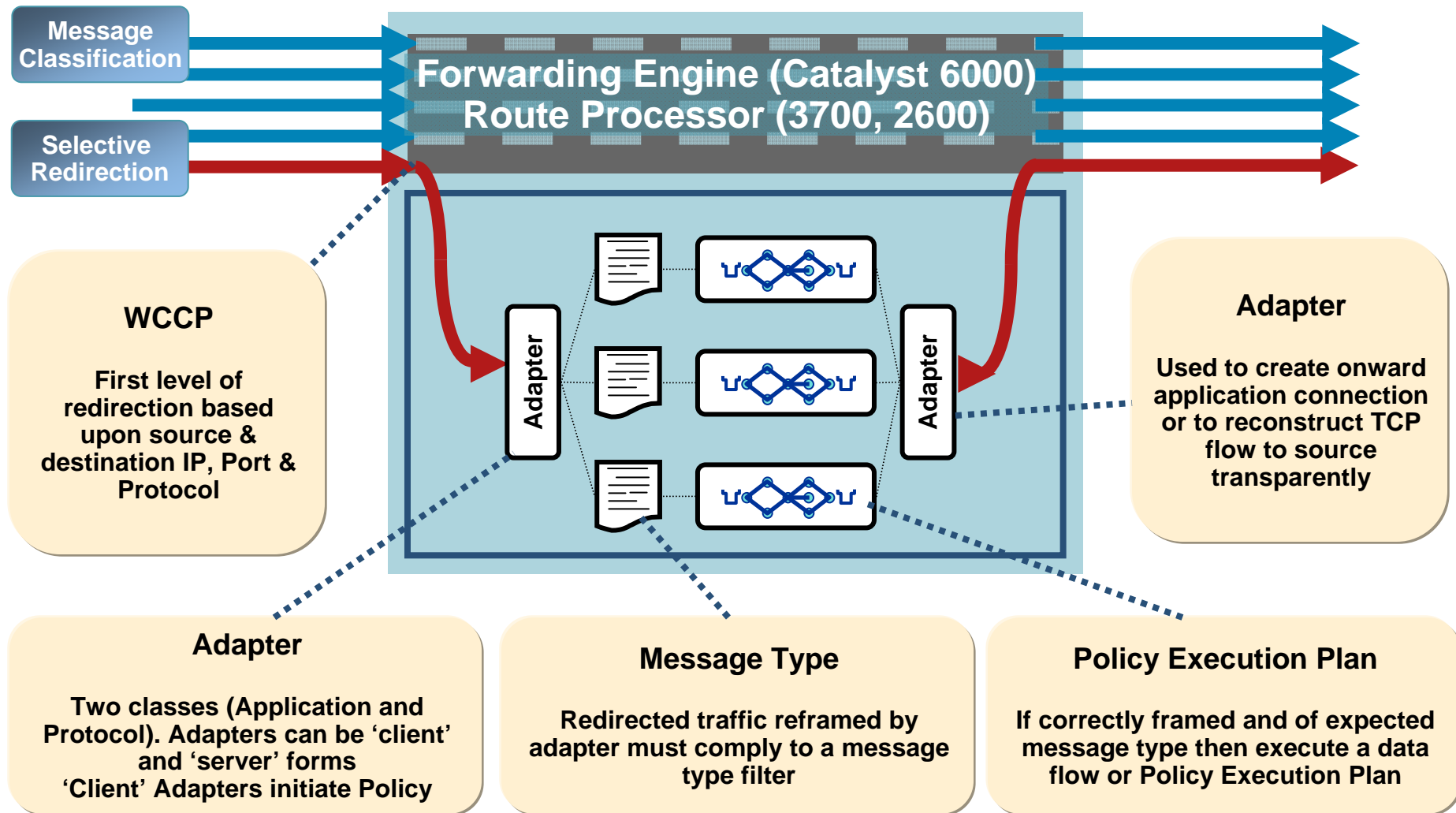
AON Device



AON Operates *within* the Network

AON devices receive traffic based upon WCCP redirection properties

AON Device



AON Operating Modes

Explicit Mode

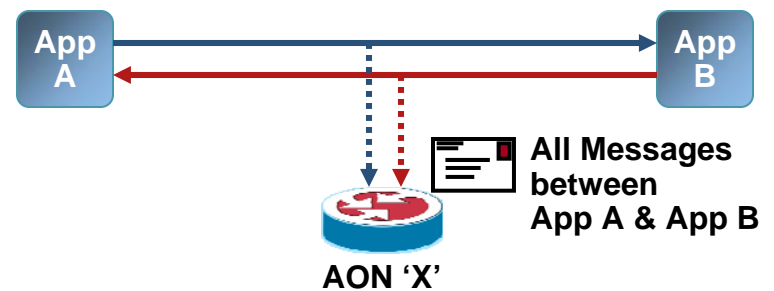
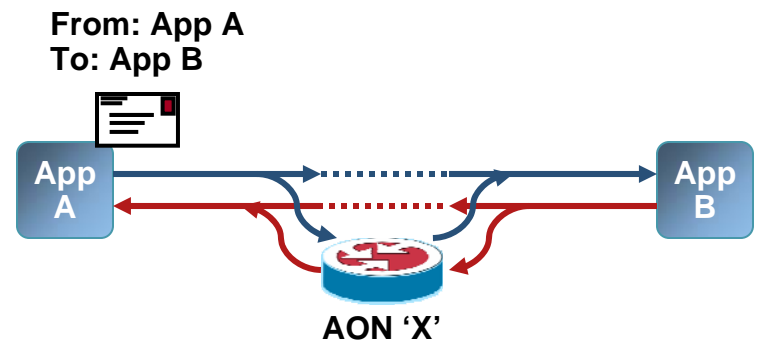
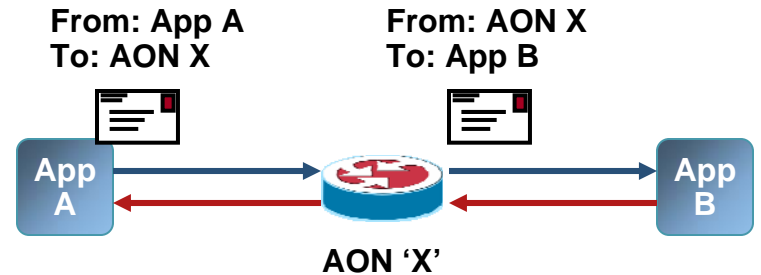
- AON acts as a proxy, explicitly addressed by caller

Transparent Mode

- AON acts as a transparent proxy, invisible to the caller

Promiscuous Mode

- AON receives copies of application messages with *zero* impact on network flow



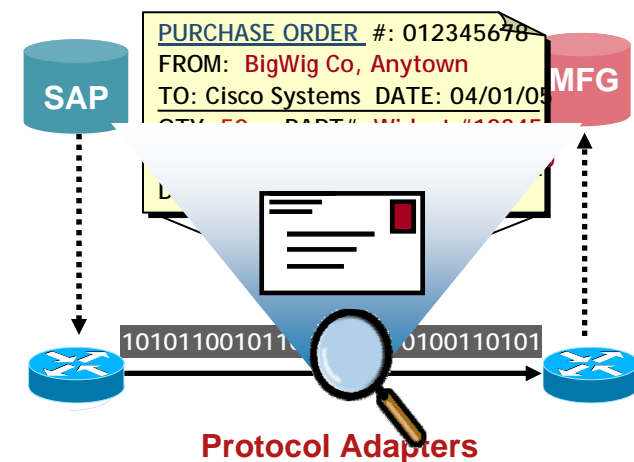
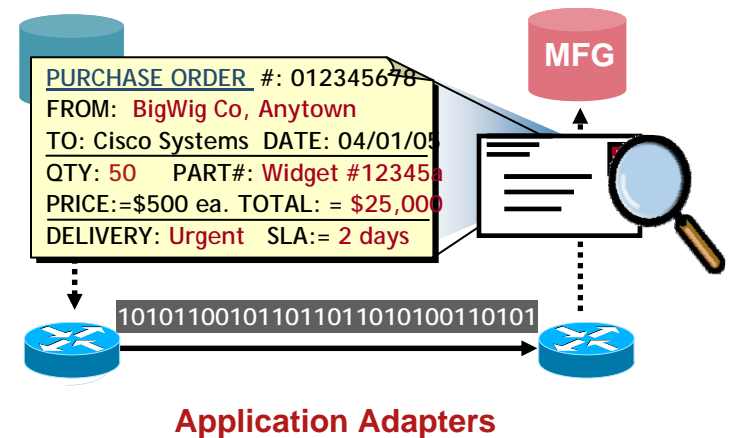
AON Adapters

Traditional Application Adapters

- Operate at Application Level
e.g. MQ Native Adapter, SAP Adapter

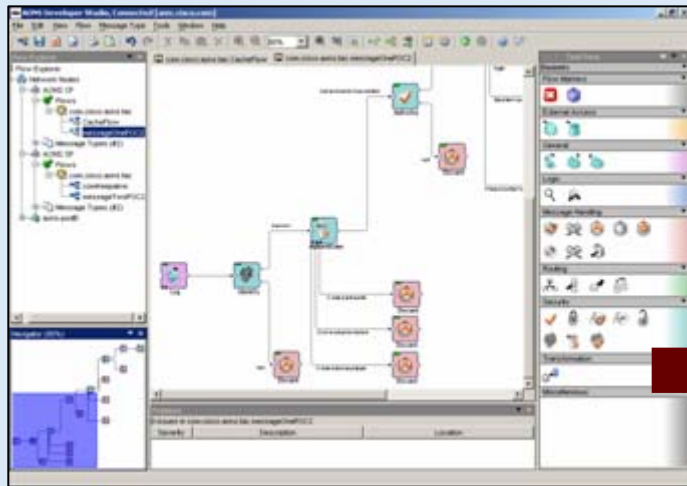
Network Protocol Adapters

- Operate at 'Network' Level
e.g. 'reframing' application messages e.g. Web Services, JMS etc..



AON Management Tools

AON Development Studio (ADS)

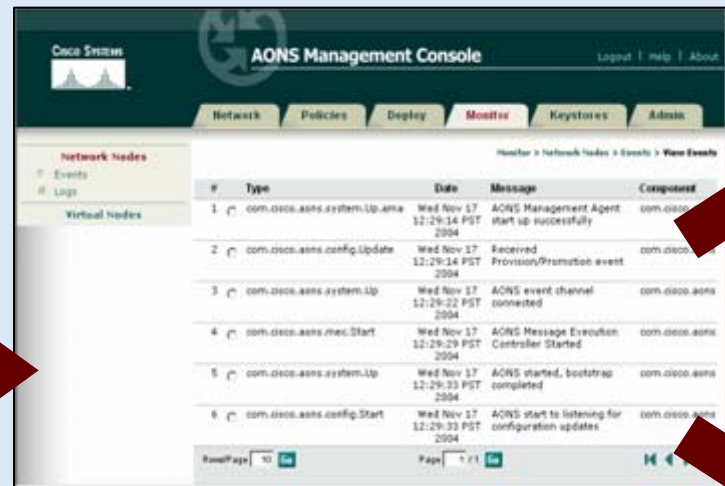


Set Application Communication and Security Policies Via GUI



User = Applications Manager

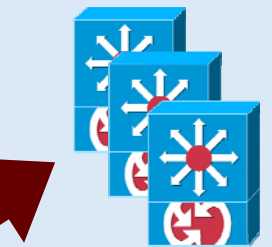
AON Management Console (AMC)



Manage AON Devices, Distribute Application Policies to All Nodes



User = Network Manager



AON Data Center Blades



AON Branch Office Blades

AON Development Studio

The screenshot displays the AON Development Studio interface. At the top is a menu bar with options: File, Edit, View, Flow, Message Type, Tools, Window, Help. Below the menu bar is a toolbar with various icons. On the left side, there is a 'PEP Explorer' window showing a tree view of project files, including 'scenarioAFlow', 'scenarioBFlow', 'scenarioCFlow', and 'scenarioDFlow'. Below this is a 'Navigator' window with a magnifying glass icon. The main workspace shows a flow diagram with nodes like 'Branch', 'Log', 'Distribute', and 'Exception Flow'. On the right side, there is a 'Bladelet Repository' window with a 'Task Pane' containing various bladelet categories like 'Flow Markers', 'External Access', 'General', 'Logic', 'Message Handling', 'Routing', 'Security', and 'Transformation'. At the bottom, there is a 'Problems Panel' showing a table with columns for 'Severity', 'Description', and 'Location'. The table currently shows 0 issues.

Menu and Toolbar

PEP Explorer

Navigator

PEP Developer

Bladelet Repository

Problems Panel

Key Terms

- Policy Execution Plan (PEP)
Set of rules to apply to a message
- Bladelet
Functional unit of a Policy
- Message Type
Meta filter to determine messages valid for processing

Q and A



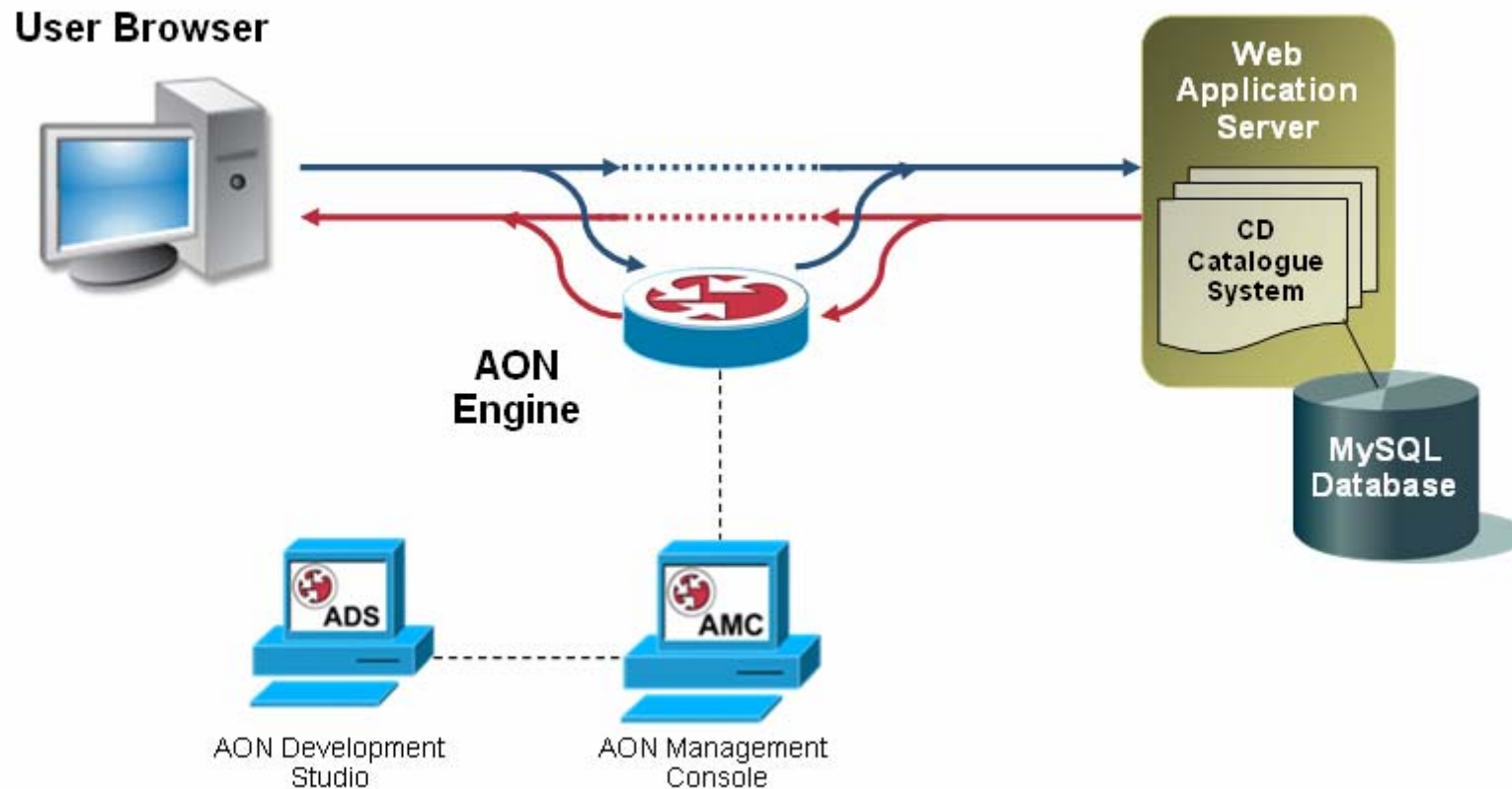
The Lab

What we are going to do



Background and Basic Instructions

The Scenario



We will intercept an HTTP post to the application server and change the data to be stored in the database

Basic Steps

- Read the Lab Guide!
- Explore an existing system
- Deploy a new policy
- Update message types
- View the results

Recommended Reading

LABAPP -1002

- Continue your Networkers learning experience with further reading from Cisco Press.
- Visit the on-site Cisco company store, where the full range of Cisco Press books is available for you to browse.



Q and A



