

# Table of Contents

<b><u>Configuring and Analyzing Clustering on Catalyst Fixed Configuration Switches</u></b> .....	<b>1</b>
<u>Document ID: 4085</u> .....	1
<u>Introduction</u> .....	1
<u>Prerequisites</u> .....	1
<u>Requirements</u> .....	1
<u>Components Used</u> .....	2
<u>Conventions</u> .....	2
<u>Important Notes</u> .....	2
<u>Command Switch Characteristics</u> .....	2
<u>Standby Command Switch Characteristics</u> .....	3
<u>Candidate Switch and Member Switch Characteristics</u> .....	3
<u>Catalyst Switch Models with Cluster Capabilities</u> .....	5
<u>Cluster Management Protocol</u> .....	7
<u>Lab Scenarios</u> .....	9
<u>Create Clusters with Cluster Management Suite</u> .....	9
<u>Add a Member in an Existing Cluster</u> .....	11
<u>Configure Clustering</u> .....	25
<u>debug and show Commands</u> .....	30
<u>Sample show Command Output</u> .....	30
<u>Sample debug Command Output</u> .....	34
<u>Appendix</u> .....	41
<u>Cluster Sample Configurations</u> .....	41
<u>Additional Information</u> .....	46
<u>NetPro Discussion Forums – Featured Conversations</u> .....	46
<u>Related Information</u> .....	46

# Configuring and Analyzing Clustering on Catalyst Fixed Configuration Switches

Document ID: 4085

---

## Introduction

### Prerequisites

- Requirements
- Components Used
- Conventions

### Important Notes

- Command Switch Characteristics
- Standby Command Switch Characteristics
- Candidate Switch and Member Switch Characteristics
- Catalyst Switch Models with Cluster Capabilities
- Cluster Management Protocol

### Configure Clustering

- Lab Scenarios
- Create Clusters with Cluster Management Suite
- Add a Member in an Existing Cluster

### debug and show Commands

- Sample show Command Output
- Sample debug Command Output

### Appendix

- Cluster Sample Configurations
- Additional Information

### NetPro Discussion Forums – Featured Conversations

### Related Information

---

## Introduction

This document describes the basic configuration steps to form a cluster on the Catalyst 1900/2820 and Catalyst fixed configuration switches with use of the Cluster Management Suite (CMS). The Catalyst fixed configuration switches that this document covers include the 2900/3500XL, 2940, 2950, 2955, 2970, 3550, 3560, and 3750 series. The intent of this document is to provide basic knowledge on how clustering works and to provide basic troubleshoot and analyze procedures with **show** commands and **debug** outputs. The document gives a simple example of a cluster build with use of the Web Interface. It also shows automatic configuration changes, noticeable during the cluster build process.

## Prerequisites

### Requirements

A separate Web Management document provides information on how to access the switch with Cisco Visual Switch Manager (VSM) or CMS. The document, Troubleshooting Cisco Visual Switch Manager or Cluster Management Suite Access on the Catalyst 2900 XL/3500 XL/2950/3550 Switch, addresses these problems:

- Unable to connect to the main web page of the switch
- **404 Not Found** errors

- A blank screen when you access VSM or CMS
- **Java is not enabled** screen
- Web Interface continually asks user name and password
- **No response from device** messages during link or bandwidth graphs creation

Refer to Troubleshooting Cisco Visual Switch Manager or Cluster Management Suite Access on the Catalyst 2900 XL/3500 XL/2950/3550 Switch if you have access problems with the Web-Based Management Interface (VSM or CMS) or if you notice any of these symptoms.

## Components Used

This document is not restricted to specific software and hardware versions.

## Conventions

For more information on document conventions, refer to the Cisco Technical Tips Conventions.

## Important Notes

Cisco Switch Clustering Technology is a set of software features available to all 2900/3500XL, 2940, 2950, 2955, 2970, 3550, 3560, and 3750 series switches and the Catalyst 1900/2820 Standard and Enterprise Edition switches. Clustering technology enables up to a maximum of 16 interconnected switches to form a managed, single-IP address network. It is essentially a method to manage a group of switches without the need to assign an IP address to every switch.

Switches within a cluster have one of these roles:

- Command switch
- Member switches
- Candidate switches

In each cluster, there is a master switch called a command switch. The rest of the switches serve as member switches. The command switch provides the primary management interface for the entire cluster. The command switch is typically the only switch within the switch cluster configured with an IP address. Each management request goes to the command switch before redirection to the appropriate member switch. For redundancy, you can configure a standby command switch. The standby command switch must be the same model as the command switch. A member switch typically is not configured with an IP address and receives management commands that the command switch has redirected. A candidate switch is a switch that you can add to the switch cluster as a member switch.

## Command Switch Characteristics

A Catalyst command switch must meet these requirements:

- The switch has an IP address.
- The switch has Cisco Discovery Protocol version 2 (CDPv2) enabled (the default).
- The switch is not a command or member switch of another cluster.
- The switch connects to the standby command switches through the management VLAN and to the member switches through a common VLAN.

The highest-end, command-capable switch in the cluster should be the command switch, as detailed here:

- If your switch cluster has a 3750 switch, that switch should be the command switch.
- If your switch cluster has 2900XL, 2940, 2950, 2955, 3550, 3560 and 3500XL switches, the 3550 or the 3560 should be the command switch.
- If your switch cluster has 2900XL, 2940, 2950, 2955, and 3500XL switches, the 2950 or the 2955 should be the command switch.
- If your switch cluster has 1900, 2820, 2900XL, and 3500XL switches, either the 2900XL or 3500XL should be the command switch.

## Standby Command Switch Characteristics

A Catalyst standby command switch must meet these requirements:

- The switch has an IP address.
- The switch has CDPv2 enabled.
- The switch is connected to other standby switches through the management VLAN and to all member switches through a common VLAN.
- The switch is redundantly connected to the cluster to maintain connectivity to member switches.
- The switch is not a command or member switch of another cluster.

Standby command switches also must meet these requirements:

- When the command switch is a 3750 switch, all standby command switches must be 3750 switches.
- When the command switch is a 3550 switch, all standby command switches must be 3550 switches.
- When the command switch is a 2955 switch, all standby command switches must be 2955 switches.
- When the command switch is a 2950 Long-Reach Ethernet (LRE) switch, all standby command switches must be 2950 LRE switches.
- When the command switch is a non-LRE 2950 switch that runs Cisco IOS® Software Release 12.1(9)EA1 or later, all standby command switches must be non-LRE 2950 switches that run Cisco IOS Software Release 12.1(9)EA1 or later.
- When the command switch is a non-LRE 2950 switch that runs Cisco IOS Software Release 12.1(6)EA2 or later, all standby command switches must be non-LRE 2950 switches that run Cisco IOS Software Release 12.1(6)EA2 or later.
- When the command switch runs Cisco IOS Software Release 12.0(5)WC2 or earlier, the standby command switches can be 2900XL, non-LRE 2950, and 3500XL switches.

The command switch and standby command switches should be of the same switch platform.

- With a 3550 command switch, the standby command switches should be 3550 switches.
- With a 2955 command switch, the standby command switches should be 2955 switches.
- With a 2950 LRE command switch, the standby command switches should be 2950 LRE switches.
- With a non-LRE 2950 command switch, the standby command switches should be non-LRE 2950 switches.
- With a 2900XL or 3500XL command switch, the standby command switches should be 2900XL and 3500XL switches.

## Candidate Switch and Member Switch Characteristics

Candidate switches are cluster-capable switches that have not yet been added to a cluster. Member switches are switches that have actually been added to a switch cluster. Although not required, a candidate or member switch can have an IP address and password. (For related considerations, refer to the *IP Addresses* section and the *Passwords* section of the document *Clustering Switches*.)

To join a cluster, a candidate switch must meet these requirements:

- The switch currently runs cluster-capable software.
- The switch has CDPv2 enabled.
- The switch is not a command or member switch of another cluster.
- The switch connects to the command switch through at least one common VLAN.
- If a cluster standby group exists, the switch connects to every standby command switch through at least one common VLAN. The VLAN to each standby command switch can differ.

**Note:** These candidate and member switches must connect to the command switch and standby command switches through the management VLAN:

- 1900 switches
- 2820 switches
- 2900XL switches
- non-LRE 2950 switches that currently run a release earlier than Cisco IOS Software Release 12.1(9)EA1
- 3500XL switches

**Note:** This requirement does not apply if you have a non-LRE 2950 command switch that currently runs Cisco IOS Software Release 12.1(9)EA1 or later, a 2950 LRE command switch, a 2955 command switch, or a 3550 command switch. Candidate and member switches can connect through any VLAN in common with the command switch.

With CDPv2, all switches, including the command switch, discover CDP neighbors and store this information in the respective CDP neighbor cache. Switches that run cluster-capable software pass the information about the switches and respective neighbors to the command switch. To do this, the switches use the Intra-Cluster Communication (ICC) mechanism, which runs on top of User Datagram Protocol (UDP). The command switch filters the information and creates a list of candidate switches.

To display this candidate list, issue the **show cluster candidates** command on the command switch.

**Note:** The list may not reflect the CDP neighbor table of the command switch. The CDP neighbor table only displays information about the neighbors with direct connection. Any switch that is in the list is a candidate to be a member switch, or a switch that the command switch can manage. A candidate switch must satisfy these requirements to join a cluster:

- The switch should have cluster capabilities. See the Catalyst Switch Models with Cluster Capabilities section of this document to verify if the switch has cluster capabilities and currently runs the right software.
- The switch has CDPv2 enabled. (CDPv2 is enabled by default.)
- The switch is not an active member or command switch of another cluster.
- The switch connects to a command switch through ports that belong to the same management VLAN.

**Note:** A candidate switch can have an IP address, but an IP address is not necessary.

**Note:** The command switch IP address provides access to all the cluster management facilities. The command switch IP address always belongs to the management VLAN (VLAN1, by default). All switches within the switch cluster must have the same management VLAN as the command switch. As of Cisco IOS Software Release 12.0(5)XP for the 2900XL and 3500XL switches, you can change the management VLAN from the default of VLAN1. In addition, Cisco IOS Software Release 12.0(5)XU or later allows you to change the management VLAN for the entire switch cluster. The change requires a single command via the CMS Web

Interface. For details on how to change the management VLAN, refer to these documents:

- *Changing the Management VLAN* section of *Creating and Managing Clusters* (applies to the 2900XL/3500XL)
- *Changing the Management VLAN* section of *Creating and Managing Clusters* (applies to the 2950 and 2955, as well as the 2940/2970)

## Discovery Through Routed Ports

If the cluster command switch has a routed port configured, the switch discovers only candidate and cluster member switches in the same VLAN as the routed port. For more information about routed ports, refer to the *Routed Ports* section of the 3750 software configuration guide *Configuring Interface Characteristics*.

## Discovery Through Different VLANs

If the command switch is a 3550, 3560, or 3750 switch, the cluster can have member switches in different VLANs. Member switches that are 3550 must connect through at least one VLAN that the switch has in common with the command switch. Member switches that are 2900XL, are 2950 and run a release earlier than Cisco IOS Software Release 12.1(9)EA1, or are 3500XL must connect to the command switch through the management VLAN. For information about discovery through management VLANs, refer to the *Discovery through the Same Management VLAN* section and the *Discovery through Different Management VLANs* section of the document *Clustering Switches*. For more information about VLANs, refer to the document *Configuring VLANs*.

## Catalyst Switch Models with Cluster Capabilities

The installation of the cluster-capable version of Catalyst software achieves cluster functionality. All Catalyst cluster-compatible switches can be command switches. You can upgrade the 8 MB 2900XL series switches to act as command switches. You cannot upgrade the 4 MB 2900XL switches to serve as command switches. Also, these switches can only act as cluster members if the switches currently run Cisco IOS Software Release 11.2(8.x)SA6.

Before you create clusters, you need to determine which switches are cluster-capable. You also need to determine which switches can act as a command switch. To determine if your switch can serve as a cluster member or a command switch, see this table:

Catalyst Switch Type
Cisco IOS Software Release
Cluster Capability
3750
Cisco IOS Software Release 12.1(11)AX or later
Member or command switch
3560
Cisco IOS Software Release 12.1(19)EA1 or later

Member or command switch

3550

Cisco IOS Software Release 12.1(4)EA1 or later

Member or command switch

2970

Cisco IOS Software Release 12.1(11)AX or later

Member or command switch

2950

Cisco IOS Software Release 12.0(5.2)WC(1) or later

Member or command switch

2955

Cisco IOS Software Release 12.1(12c)EA1 or later

Member or command switch

2950 LRE

Cisco IOS Software Release 12.1(11)YJ or late

Member or command switch

2940

Cisco IOS Software Release 12.1(13)AY or later

Member or command switch

3500XL

Cisco IOS Software Release 12.0(5.1)XU or later

Member or command switch

2900 LRE XL (16 MB switches)

Cisco IOS Software Release 12.0(5.1)WC1 or later

Member or command switch

2900XL (8 MB switches)

Cisco IOS Software Release 12.0(5.1)XU or later

Member or command switch

2900XL (4 MB switches)

Cisco IOS Software Release 11.2(8.5)SA6 (recommended)

Member switch only<sup>1</sup>

1900 and 2820

Cisco IOS Release Software 9.0 (-A or -EN)

Member switch only

<sup>1</sup>The 2900XL (4 MB) switches appear in the front-panel and topology views of CMS. However, CMS does not support configuration or the monitor of these switches. To determine if your 2900XL switch has 4 MB or 8 MB of DRAM, and if the switch needs a software upgrade, issue the user-level **show version** command. For more information on this command, refer to the *How to Determine the Amount of Memory on the Switch Using Command Line Interface* section of *Upgrading Software in Catalyst 2900XL and 3500XL Switches Using the Command Line Interface*.

**Note:** To support 1900 and 2820 switches as member switches, the command switch (3500XL or 8 MB 2900XL) must currently run Cisco IOS Software Release 12.0(5)XP or later. The 2950 command switch must run Cisco IOS Software Release 12.0(5)WC(1) or later.

The 1900 and 2820 switches must run firmware version 9.00 (Standard or Enterprise Edition) and cannot serve as command switches. For further details, refer to the Release Notes for the Catalyst 1900 and Catalyst 2820 Series Switches, Version 9.00.

## Cluster Management Protocol

With the enable of switch clustering, there is an assignment to the command switch of a virtual IP address known as the Cluster Management Protocol (CMP). When a switch becomes a member, the command switch generates another CMP address for the new member switch. This address is for any ICC. The command switch uses this CMP address to send an add message to the candidate switch. The candidate switch checks to be sure that it is not part of another cluster before the switch extracts the CMP address and the cluster information from the add message. The candidate switch then replies to the command switch.

**Note:** CMP addresses that are for ICC differ from the IP address that is for the switch or cluster management. The CMP addresses do not respond to pings. This lack of response is due to static Address Resolution Protocol (ARP) entries that exist for all CMP addresses within the switch cluster but are transparent to the world outside the cluster.

CMP is a collection of underlying technologies that facilitate the management of 16 switches with use of a single IP address. CMP consists of three key technology pieces:

- CMP address assignment mechanism
- CMP/IP transport mechanism
- CMP/Reverse Address Resolution Protocol (RARP) address resolution mechanism



The CMP address assignment mechanism provides a way to dynamically allocate CMP addresses to members of a cluster and ensure that these CMP addresses do not conflict with other CMP and IP addresses within the cluster. The CMP address assignment mechanism also provides a way to resolve an address conflict. The CMP/IP is the transport mechanism that exchanges management packets between the command switch and member switches. CMP/IP packets are regular IP packets that are encapsulated in a Subnetwork Access Protocol (SNAP) header with Cisco Organizational Unique Identifier (OUI) and CMP protocol type. The identification distinguishes these packets from the regular Ethernet TCP/IP packets. The format allows current IP applications to work on CMP/IP without any change and allows HTTP and Single Network Management Protocol (SNMP) redirection to occur. CMP/RARP is a variation of the RARP. It adds and removes switches from a cluster, sets cluster parameters, and notifies the command switch of CMP address conflicts.

The **debug cluster ip** section of this document further explains CMP with the help of **debug** commands.

## Communication Within a Switch Cluster ICC

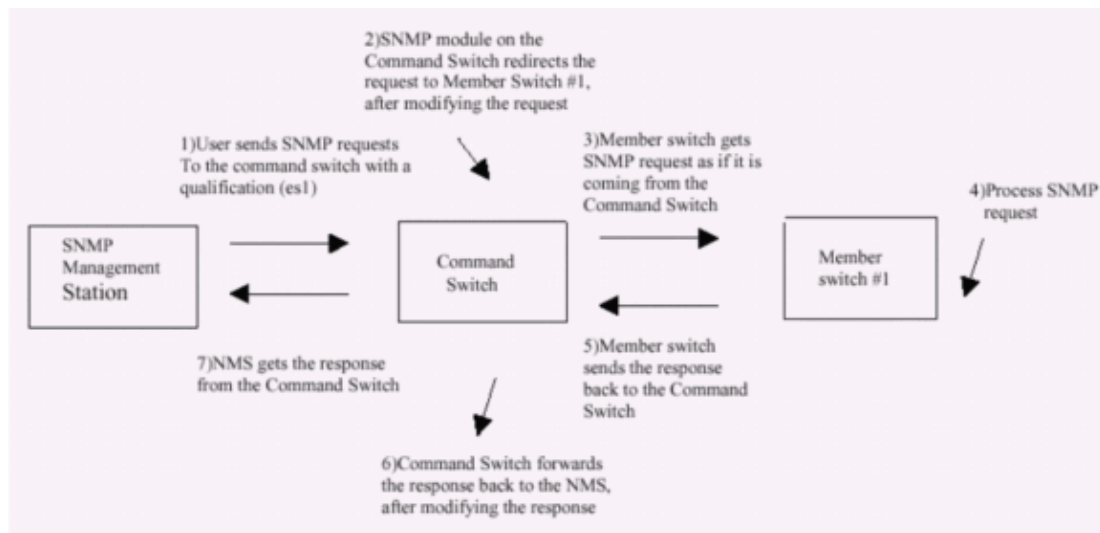
Communication within a cluster uses CMP addresses; ICC transports it. Any communication external to the cluster uses IP addresses and the TCP/IP transport mechanism. For communication from a CMP-addressed device to an external IP-addressed device, the command switch acts as a proxy and performs the translation between the CMP and TCP/IP protocols.

As the Cluster Management Protocol section mentions, the command switch assigns IP addresses called CMP addresses to all the switches within a cluster. Any time the management PC uses the command switch IP address to access the member switches, the command switch uses the CMP addresses to redirect traffic.

For example, at the creation of a cluster, the command switch manages the exchange of messages between member switches and an SNMP application. The cluster management software appends the member switch number (@es*N*, in which *N* is the switch number) to the first configured read-write (RW) and read-only (RO) community strings on the command switch. It then propagates them to the member switch. The command switch uses the community strings to control the forward of get-request, set-request, and get-next-request messages between the SNMP management station and the member switches.

When you manage a member switch within a cluster with the use of CMS or SNMP, the management station sends management requests to the command switch IP address. The requests go to the command switch because a member switch typically does not have an IP address. The request includes a qualifier (es*N*, in which *N* is the switch number). The qualifier informs the command switch of the member to which the request is ultimately destined. The command switch modifies the request such that the request appears to have come from the command switch. It then forwards the request to the appropriate member switch. The member switch receives the management request and executes the command locally. Since the member switch "thinks" that the management packets came from the command switch, the acknowledgments go directly to the command switch. Finally, the command switch modifies the acknowledgments and resends them to the management station.

This flow chart demonstrates how SNMP redirection works:



For further details on SNMP management on the XL series switches, refer to the documents listed here:

- *Using SNMP Management* section of *Using the Management Interfaces*
- *Configuring SNMP for a Cluster* section of *Creating and Managing Clusters*.
- *Configuring SNMP* section of *Managing Switches*.

## Configure Clustering

This section describes step-by-step procedures to configure clustering on Catalyst 2900XL/3500XL, 2940, 2950, 2955, 2970, 3550, 3560, and 3750 switches with use of CMS. The development and test of configurations in this section occurred with these software and hardware versions:

### Software Versions

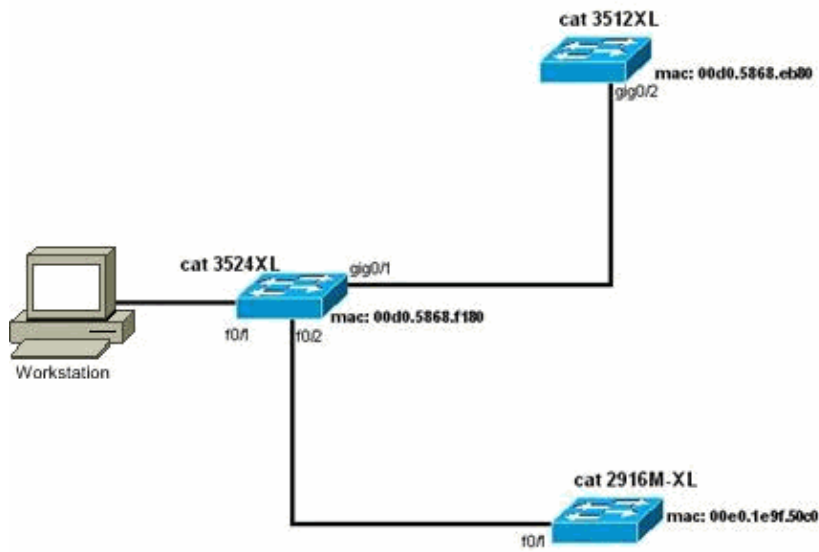
- 3500XL (3500XL-C3H2S-M) Cisco IOS Software Release 12.0(5.2)XU, Maintenance Interim Software
- 2900XL (2900XL-C3H2S-M) Cisco IOS Software Release 12.0(5.2)XU, Maintenance Interim Software
- 2900XL (2900XL-HS-M) Cisco IOS Software Release 11.2(8.6)SA6, Maintenance Interim Software

### Hardware Versions

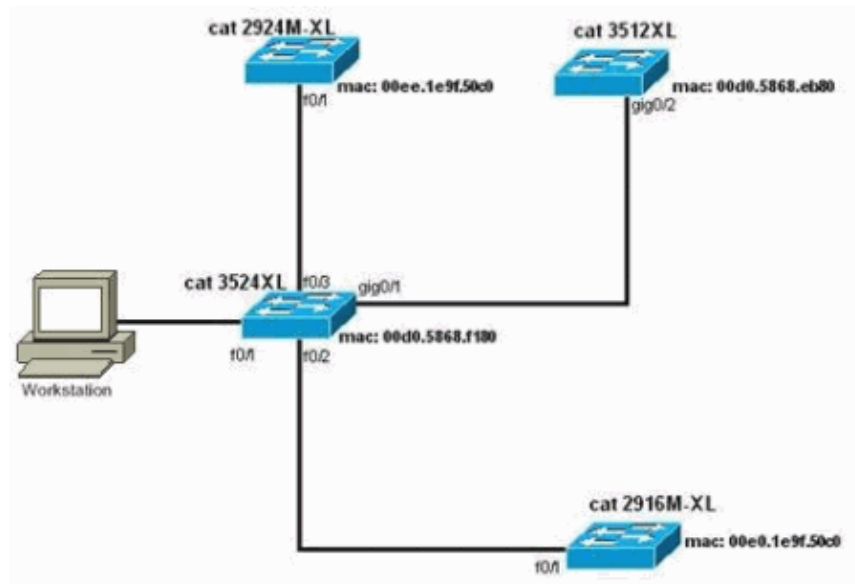
- Cisco WS-C3524XL (PowerPC403) processor (revision 0x01) with 8192 KB/1024 KB of memory
- Cisco WS-C3512XL (PowerPC403) processor (revision 0x01) with 8192 KB/1024 KB of memory
- Cisco WS-C2924MXL (PowerPC403GA) processor (revision 0x11) with 8192 KB/1024 KB of memory
- Cisco WS-C2916MXL (PowerPC403GA) processor (revision 0x11) with 4096 KB/640 KB of memory

## Lab Scenarios

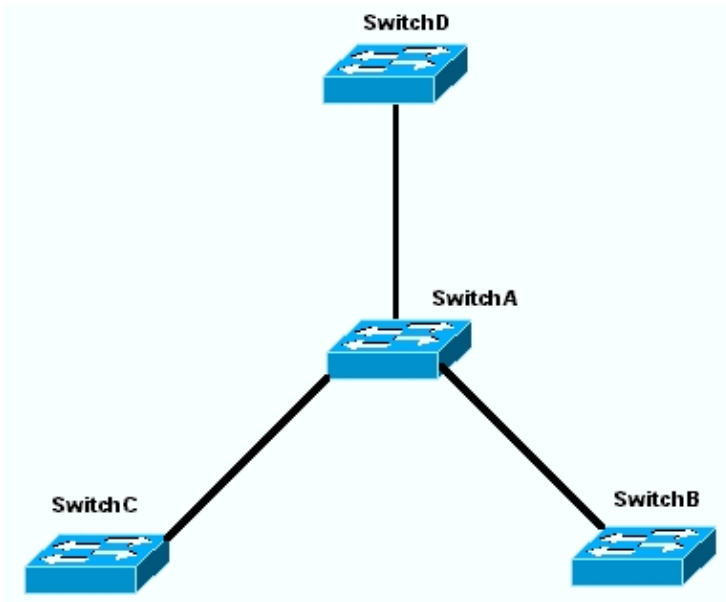
### Diagram 1



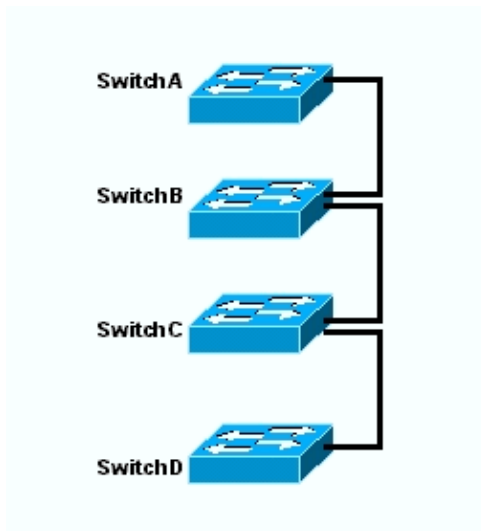
**Diagram 2**



**Diagram 3: Star Topology**



**Diagram 4: Daisy-Chain Topology**



## Create Clusters with Cluster Management Suite

This section describes the step-by-step procedure to create a simple cluster with use of CMS. The configuration examples and output in these steps use 3500XL and 2900XL series switches. However, you can substitute other fixed configuration switches that support CMS clustering. Also, the user interface of some switches may appear different than the windows you see in this section. (See Figure 1 and the images that follow Figure 1.) This difference depends on the code version you have installed in the switch.

The easiest way to configure a cluster is through the Web Interface. However, you must know what is going on "behind the scenes". This section provides windows that show the web cluster configuration as well as the changes to the configurations on the switches that result.

This section also uses an example to explain the procedure to create clusters with use of CMS. In the example, you have wired together four switches with use of Gigabit and Fast Ethernet ports. Initially, you create a cluster with one command switch and two member switches. Later, you add another switch in the cluster, which demonstrates how to add a new member.

**Note:** This document does not show how to configure the cluster with the Command Line Interface (CLI). For more information on the CLI, refer to the *CLI* configuration sections of *Creating and Managing Clusters*.

The implementation of the configurations in this document occurred in an isolated lab environment, as you see in Diagram 1 and Diagram 2. Be sure that you understand the potential impact of any configuration or command on your network before you use it. The issue of the **write erase** command cleared the configurations on all devices and ensured that the devices had a default configuration.

**Note:** This document assumes that you can access the CLI on the switches with use of the console port. For details on how to access an XL switch with the console port, refer to the *Accessing the Switch Using Console Port* section of *Upgrading Software in Catalyst 2900XL/3500XL Switches Using the Command Line Interface*.

1. Check that all switches have a version of either command or member switch code that has cluster support.

This is always the case for 2940, 2950, 2970, 3550, 3560, and 3750 series switches because all code versions support clustering.

For details on software versions and the switches that support clustering, see the *Catalyst Switch Models with Cluster Capabilities* section of this document. To determine if your 2900XL/3500XL switch runs cluster-capable software, issue the user-level **show version** command on the switch.

For example, a 2900XL or 3500XL series switch that runs command- and member-capable software provides this output of the **show version** command:

```
Switch> show version
Cisco Internetwork Operating System Software
IOS (TM) C3500XL Software (C3500XL-C3H2S-M), Version 12.0(5.2)XU,
MAINTENANCE INTERIM SOFTWARE
Copyright (c) 1986-2000 by cisco Systems, Inc.
Compiled Mon 17-Jul-00 18:29 by ayounes
Image text-base: 0x00003000, data-base: 0x00301F3C

ROM: Bootstrap program is C3500XL boot loader

Switch uptime is 3 days, 1 hour, 45 minutes
System returned to ROM by reload
System image file is "flash:c3500XL-c3h2s-mz-120.5.2-XU.bin"

cisco WS-C3524-XL (PowerPC403) processor (revision 0x01) with 8192K/1024K
bytes of memory.
Processor board ID , with hardware revision 0x00
Last reset from warm-reset

Processor is running Enterprise Edition Software
Cluster command switch capable
Cluster member switch capable
24 FastEthernet/IEEE 802.3 interface(s)
2 Gigabit Ethernet/IEEE 802.3 interface(s)

32K bytes of flash-simulated non-volatile configuration memory.
Base ethernet MAC Address: 00:D0:58:68:F1:80
Configuration register is 0xF
```

**Note:** In this output, Cluster command switch capable and Cluster member switch capable show that the switch currently runs a software that is both command- and

member-capable. If the switch only runs member-capable software, then only `Cluster member switch capable` appears in the output. You can also configure a switch that runs command-capable software as a member switch; however, you can never configure a switch that runs only member-capable software as a command switch.

2. If you find in Step 1 that the switch does not run cluster-capable software, upgrade the switch to the correct software.

Once the switch runs the cluster-capable image, proceed to Step 3.

3. Cable the switches so that the command switch is able to discover the candidate switches that are capable of addition to the cluster.

With use of CDPv2, the command switch can automatically discover switches in star or daisy-chain topologies that are up to three cluster-enabled devices (three hops) away from the edge of the cluster. With Cisco IOS Software Release 12.0(5)XU code, or later, you can configure the command switch to discover switches that are up to seven cluster-enabled devices (seven hops) away.

Issue this command on the command switch if you want to enable discovery of the candidate switch that is up to seven hops away:

```
Switch(config)# cluster discovery hop-count 7
```

If a switch supports CDP but does not support clustering, and it connects to the command switch, the cluster is unable to discover candidates that attach to it. For example, Cluster Builder cannot create a cluster that includes candidates that connect to a Catalyst 5500/5000 or 6500/6000 series switch that connects to the command switch.

Also, be sure that you connect all the switches with those ports that are in the same management VLAN. Access to all the cluster management facilities is through the command switch IP address. The command switch IP address always belongs to the management VLAN (VLAN1, by default). All switches within the switch cluster must have the same management VLAN as the command switch.

**Note:** As of Cisco IOS Software Release 12.0(5)XP for the 2900XL and 3500XL switches, you can change the management VLAN from the default (VLAN1). In addition, Cisco IOS Software Release 12.0(5)XU or later allows you to change the management VLAN for the entire switch cluster. The change requires a single command via the CMS Web Interface. For details on how to change the management VLAN, refer to these documents:

- ◆ *Changing the Management VLAN* section of *Creating and Managing Clusters* (2900XL/3500XL switches)
- ◆ *Changing the Management VLAN* section of *Creating and Managing Clusters* (2950, 2955, and 2940/2970 switches)

This example configures the center switch (3524XL) as the command switch. (See Diagram 1.)

4. After determination of the command switch, assign an IP address.

The command switch IP address in this example is 172.16.84.35. Use these commands to perform the initial configuration on the command switch:

```
Switch> enable
Switch# configure terminal
Enter configuration commands, one per line. End with CNTL/Z.
Switch(config)# enable password mysecret
Switch(config)# interface vlan1
Switch(config-if)# ip address 172.16.84.35 255.255.255.0
Switch(config-if)# exit
```

```

Switch(config)# ip default-gateway 172.16.84.1
Switch(config)# ip http server(Enabling web access to the switch)
Switch(config)# end
Switch#
%SYS-5-CONFIG_I: Configured from console by console
Switch# write memory
Building configuration...
[OK]

```

**Note:** This is an initial configuration that you must configure on the switch to access it with the web. Cluster configuration has not occurred at this point. If you issue the **show running-config** command on the switch, you do not notice the addition of any cluster commands in the configuration file.

5. To start the Web Interface, enter the command switch IP address in your browser window.

Use this syntax to enter the IP address:

```
http://x.x.x.x
```

**Note:** The variable *x.x.x.x* is the IP address of the command switch.

There may be a prompt for a login and password. Use the enable password as your login and password. In this example, **mysecret** is the enable password. After you enter the login and password, you see the Cisco access page, as you see in Figure 1. If you have trouble with switch access when you use the web browser, refer to Troubleshooting Cisco Visual Switch Manager or Cluster Management Suite Access on the Catalyst 2900 XL/3500 XL/2950/3550 Switch.

**Figure 1**

## Cisco Systems

### Accessing Cisco WS-C3524-XL "switch"

[Cluster Management Suite or Visual Switch Manager](#)

[Telnet](#) - To the Switch.

[Show interfaces](#) - Display the status of the interfaces.

[Show diagnostic log](#) - Display the diagnostic log.

[Web Console](#) - HTML access to the command line interface at level [0](#),[1](#),[2](#),[3](#),[4](#),[5](#),[6](#),[7](#),[8](#),[9](#),[10](#),[11](#),[12](#),[13](#),[14](#),[15](#)

[Show tech-support](#) - Display information commonly needed by tech support.

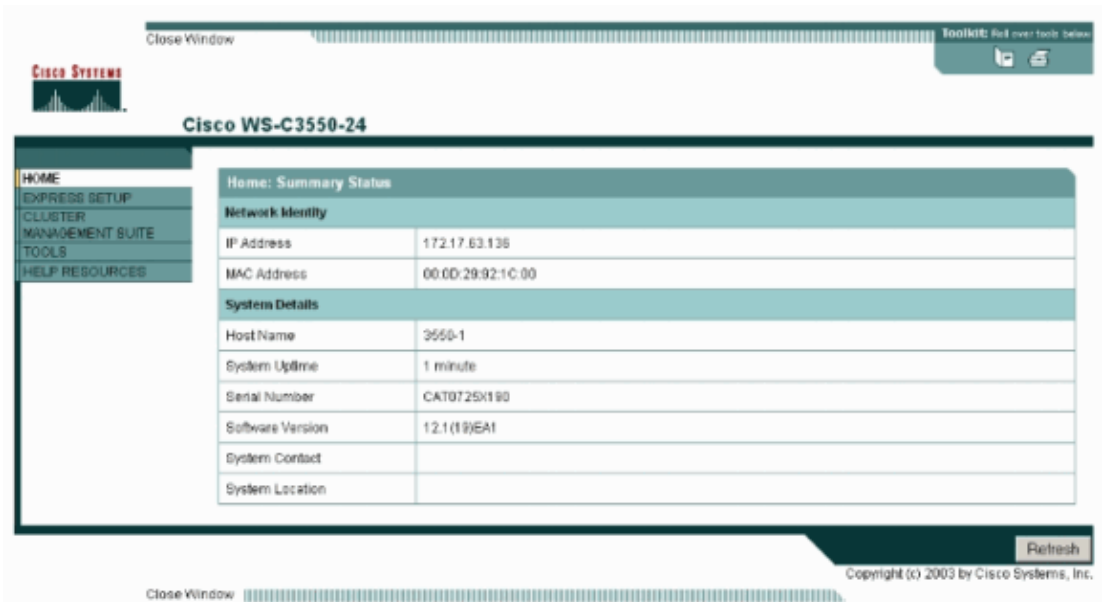
---

#### Help resources

1. [CCO at www.cisco.com](#) - Cisco Connection Online, including the Technical Assistance Center (TAC).
2. [tac@cisco.com](mailto:tac@cisco.com) - e-mail the TAC.
3. 1-800-553-2447 or +1-408-526-7209 - phone the TAC.
4. [cs-html@cisco.com](mailto:cs-html@cisco.com) - e-mail the HTML interface development group.

**Note:** Later software versions use a Cisco access page like this one:

**Figure 2**



6. Click **Cluster Management Suite** or **Visual Switch Manager** on the Cisco access page.

This brings up the Visual Switch Manager logo screen, as you see in Figure 3. The Switch Manager home page, as you see in Figure 4, loads.

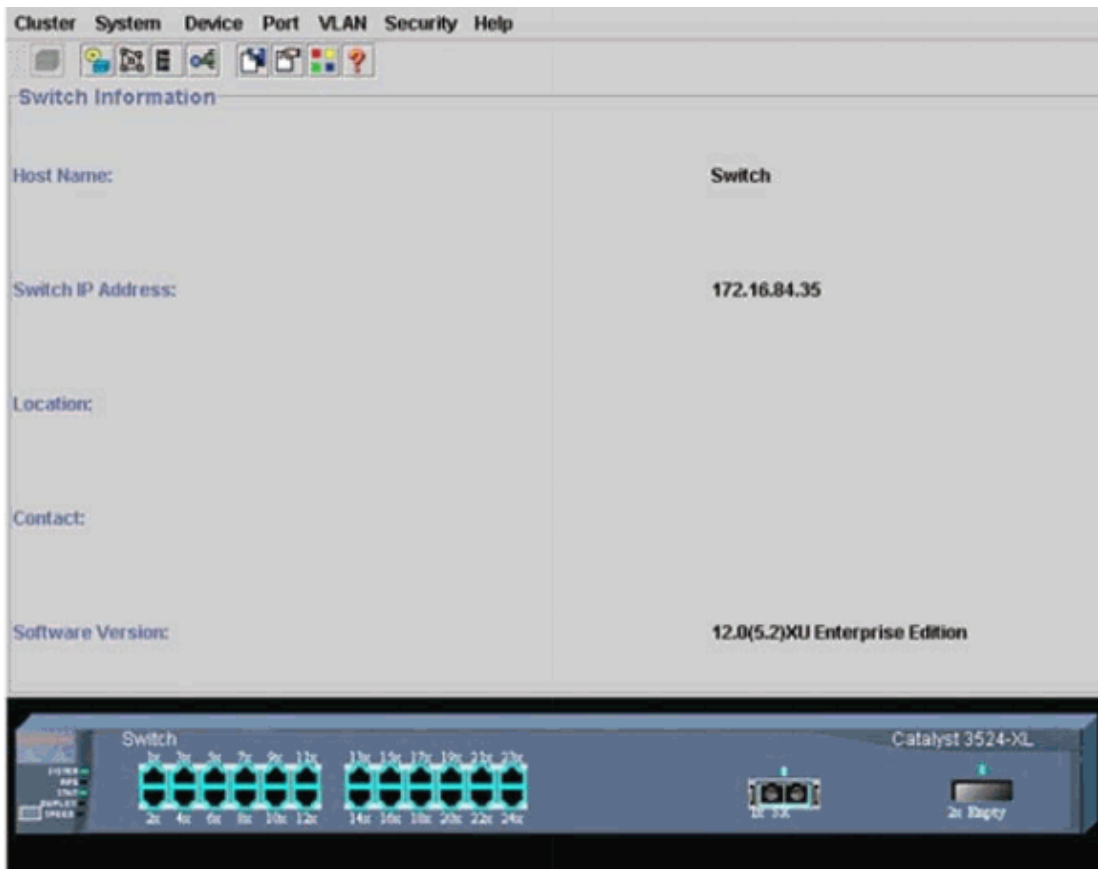
**Note:** When you access the Cluster Management Suite or Visual Switch Manager link on the Cisco access page, you see the Visual Switch Manager logo screen first. With the enable of clustering, you see the Cluster Management Suite screen after the Visual Switch Manager logo screen (instead of Figure 4).

**Figure 3**





**Figure 4**



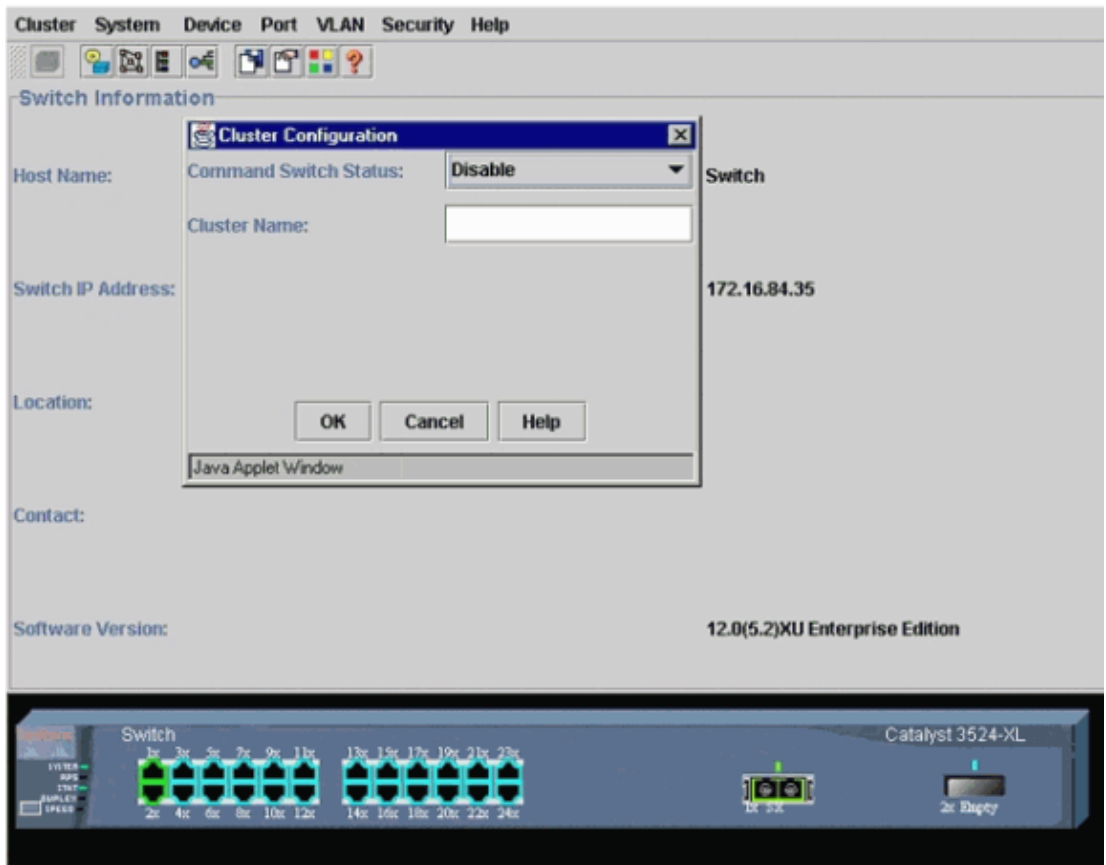
**Note:** If you have difficulty with access to the Switch home page that you see in Figure 4, refer to Troubleshooting Cisco Visual Switch Manager or Cluster Management Suite Access on the Catalyst 2900 XL/3500 XL/2950/3550 Switch to troubleshoot the problem.

Up to this point, no cluster configuration has been done. Therefore, there are no changes in the configuration of any of the switches that relate to clustering. In the steps that follow, you add cluster commands in the configuration files. The procedure discusses each command.

7. From the menu bar, choose **Cluster > Cluster Command Configuration**.

This brings up the Cluster Configuration window, as you see in Figure 5.

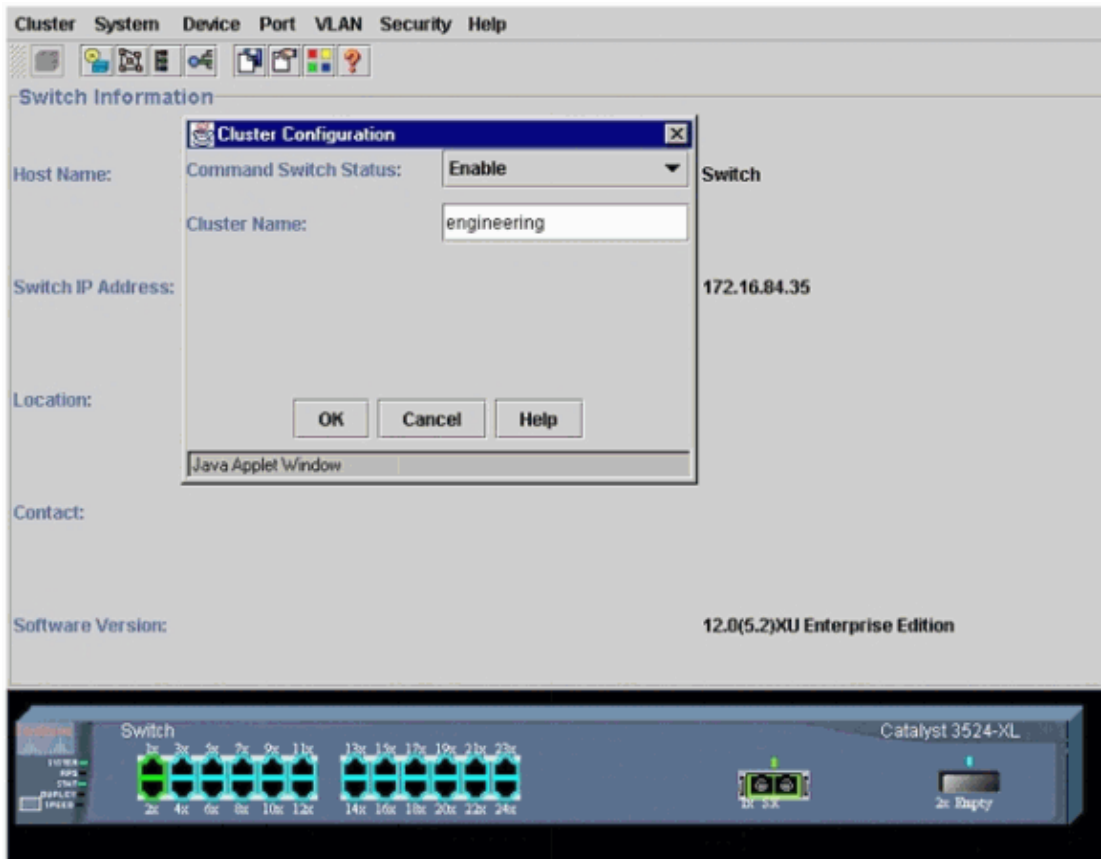
**Figure 5**



8. In the the Command Switch Status field, choose **Enable**.
9. Type a name in the Cluster Name field.

You can use up to 31 characters to name your cluster. This example uses "engineering" as the cluster name:

**Figure 6**

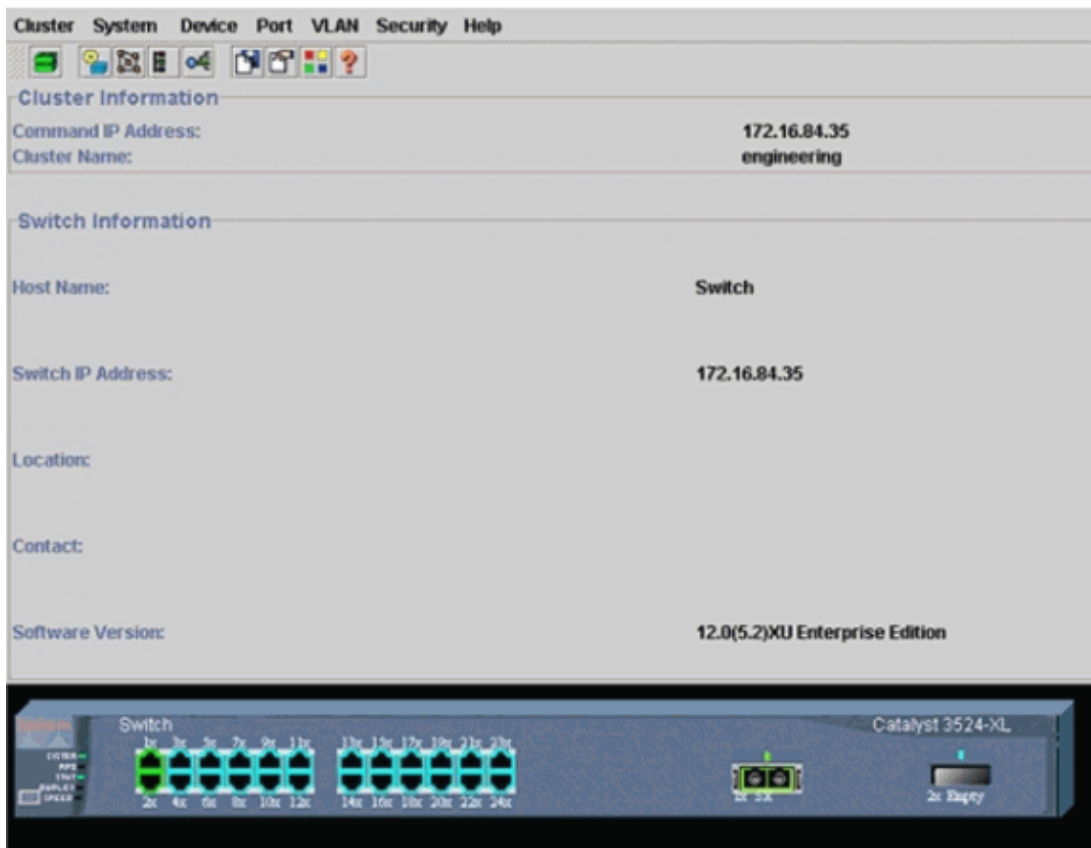


10. Click **OK**.

This enables clustering on the center switch and makes it a command switch. When you click OK, you see the addition of cluster information on the screen, as you see in Figure 7.

The Command IP Address and the Cluster Name are now visible. This screen also has the name Cluster Management Suite.

**Figure 7**



At this point, the update of the center switch (3524XL) configuration has occurred with the commands that appear in **bold**:

```

!
hostname Switch
!
enable password mysecret
!
ip subnet-zero
cluster enable engineering 0
!
!
!
interface VLAN1
ip address 172.16.84.35 255.255.255.0
no ip directed-broadcast
ip nat outside
!
!
ip default-gateway 172.16.84.1
ip Nat inside source list 199 interface VLAN1 overload
access-list 199 dynamic Cluster-NAT permit ip any any

!--- Full configuration output is suppressed.

```

When you issue the **cluster enable engineering** command, you enable command switch functionality with the cluster name of "engineering". Network Address Translation (NAT) commands have automatic addition to the configuration file of the command switch. Do not remove these commands because the commands access the member switches. When the command switch manages a member

switch through the Web Interface, the command switch acts as a proxy and forwards HTTP and Java calls to the member switch. The command switch uses virtual inside NAT addresses (also known as CMP addresses) to perform this action. For details on how CMP works, see the Cluster Management Protocol section of this document.

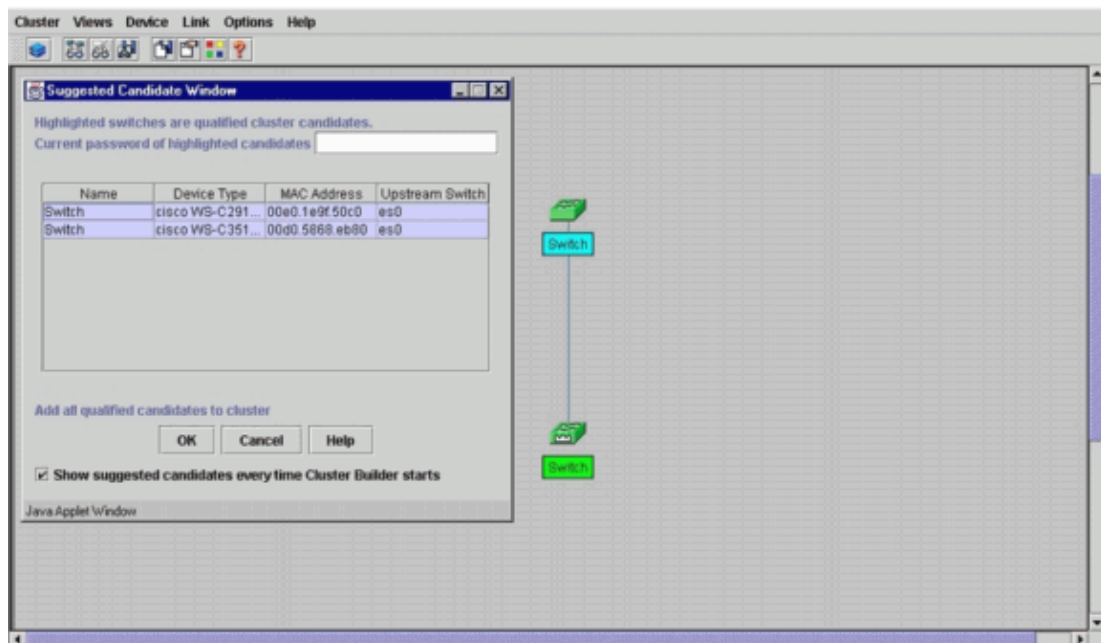
11. Choose **Cluster > Cluster Management**.

A new cluster management window opens. The window shows the Cluster Builder (map of the switches). Inside this window, the Suggested Candidate window appears, as you see in Figure 8. You can move or minimize the Suggested Candidate window to see the Cluster Builder window (map) clearly. The map shows the command and the candidate switch.

Cluster Builder uses CDP to discover candidate switches that are capable of addition to a cluster. With CDP, the command switch can automatically discover switches in star or daisy-chain topologies that are up to three cluster-enabled devices (three hops) away from the edge of the cluster. (See Step 3 of this section.) With Cisco IOS Software Release 12.0(5)XU code, or later, you can configure the command switch to discover switches that are up to seven cluster-enabled devices (seven hops) away.

**Note:** In the Suggested Candidate window, the Show suggested candidates every time Cluster Builder starts check box is checked. Depending on this selection, you may or may not see the Suggested Candidate window, which is enabled by default.

**Figure 8**



**Note:** There is only one candidate switch that appears in the map. The command switch appears in green, and the candidate switch appears in blue. The switches appear this way because there are two switches that have the default host name of Switch. At this time, none of the candidate switches that appear in blue have been added in the cluster. The Cluster Manager only displayed one switch in the Figure 8 topology diagram when there are actually two.

You can see the correct number of candidate switches in the Suggested Candidate window, as you see in Figure 8. You can also use the CLI to check the correct number of candidate switches that have the potential to be a member switch. For example:

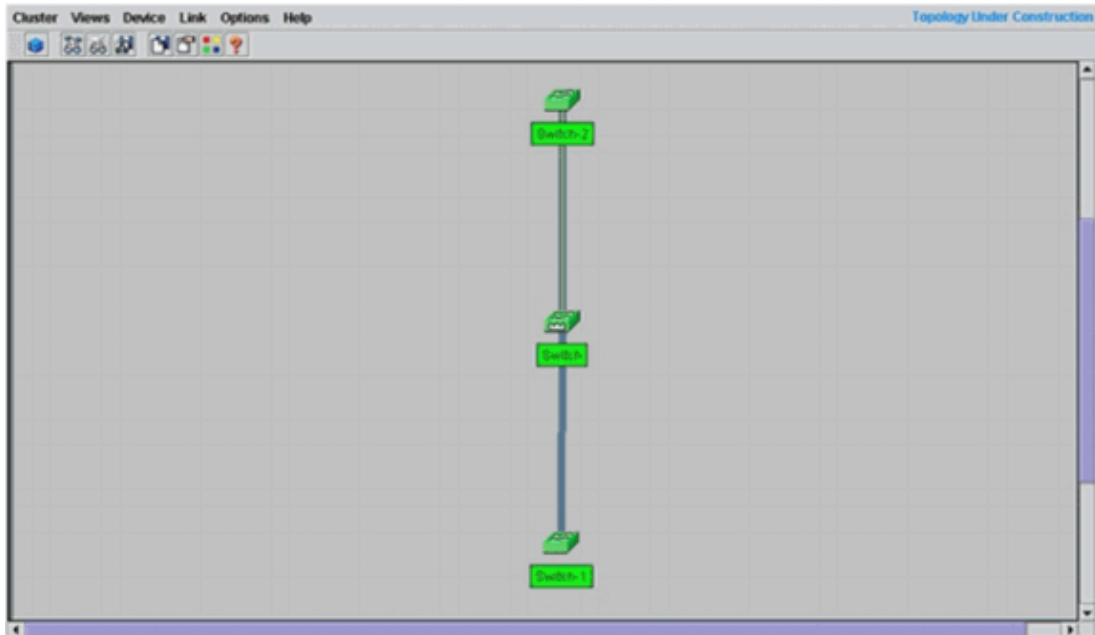
```
Switch# show cluster candidates
```

MAC Address	Name	Device Type	PortIf	FEC	Hops	SN	PortIf
00e0.1e9f.50c0	Switch	WS-C2916M-XL	Fa0/1		1	0	Fa0/2
00d0.5868.eb80	Switch	WS-C3512-XL	Gi0/2		1	0	Gi0/1

12. Click **OK** in the Suggested Candidate window, and wait for about 30 seconds.

You see this screen, which shows the correct number of member switches and the command switch:

**Figure 9**



In this diagram, center switch Switch is the command switch. Switch-1 and Switch-2 are the member switches. Now, all the switches are green, which shows that they are in the cluster with the name "engineering".

You can verify this cluster if you issue these commands on the command and member switches:

◆ Command Switch (center switch, 3524XL):

```
Switch# show cluster
Command switch for cluster "engineering"
  Total number of members:      3
  Status:                       0 members are unreachable
  Time since last status change: 0 days, 0 hours, 7 minutes
  Redundancy:                   Disabled
  Heartbeat interval:           8
  Heartbeat hold-time:          80
  Extended discovery hop count: 3
```

```
Switch# show cluster members
```

SN	MAC Address	Name	PortIf	FEC	Hops
0	00d0.5868.f180	Switch			0
1	00e0.1e9f.50c0	Switch-1	Fa0/1		1
2	00d0.5868.eb80	Switch-2	Gi0/2		1

```
Switch# show cluster view
```

SN	MAC Address	ow	Name	Device Type	PortIf
0	00d0.5868.f180		Switch	<b>WS-C3524-XL</b>	
1	00e0.1e9f.50c0		Switch-1	<b>WS-C2916M-XL</b>	Fa0/1
2	00d0.5868.eb80		Switch-2	<b>WS-C3512-XL</b>	Gi0/2

The changes that take place in the configuration file of the command switch after you perform Step 12 appear here in **bold**:

```

!
ip subnet-zero
cluster enable engineering 0
cluster member 1 mac-address 00e0.1e9f.50c0
cluster member 2 Mac-address 00d0.5868.eb80
!
!
!

!--- Full configuration output is suppressed.

```

**Note:** When a candidate switch becomes a member switch, the command switch configuration adds the member switch MAC address. Also, the member switch configuration adds the command switch MAC address.

◆ Member Switch-1 (bottom switch, 2916MXL)

```

Switch-1# show cluster
Cluster member 1
Cluster name: engineering
Management ip address: 172.16.84.35
Command device Mac address: 00d0.5868.f180
Switch-1#

```

The management IP address is the IP address of the command switch. This defines the concept of clustering, which is the management of a group of switches with use of a single IP address.

Also, if you have console connection to member Switch-1, this message appears on the console of the member switch as soon as the cluster adds the switch:

```

Switch#
%CMP-CLUSTER_MEMBER_1-5-ADD: The Device is added to the cluster
(Cluster Name: engineering, CMDR IP Address 172.16.84.35)
Switch-1#

```

The changes that take place in the configuration file of the command switch after you perform Step 12 appear here in **bold**:

```

!
hostname Switch-1
!
enable password mysecret
!
!
no spanning-tree vlan 1
no ip domain-lookup
!
cluster commander-address 00d0.5868.f180

```

```

!--- You may also see the member number and cluster name in the
!--- above line. This depends on the version of code that you use.

!
interface VLAN1
no ip address
no ip route-cache

!--- Full configuration output is suppressed.

```

◆ Member Switch–2 (top switch, 3512XL)

```

Switch-2# show cluster
Member switch for cluster "engineering"
Member number: 2
Management IP address: 172.16.84.35
Command switch Mac address: 00d0.5868.f180
Heartbeat interval: 8
Heartbeat hold-time: 80
Switch-2#

```

The management IP address is the IP address of the command switch.

Also, if you have console connection to member Switch–2, this message appears on the console of the member switch as soon as the cluster adds the switch:

```

Switch#
%CMP-CLUSTER_MEMBER_2-5-ADD: The Device is added to the cluster
(Cluster Name: engineering, CMDR IP Address 172.16.84.35)
Switch-2#

```

The changes that take place in the configuration file of the command switch after you perform Step 12 appear here in **bold**:

```

!
hostname Switch-2
!
enable password mysecret
!
!
ip subnet-zero
!
cluster commander-address 00d0.5868.f180 member 2 name engineering

!--- If you run an older version of code, you may not see
!--- the member number and cluster name in the above line.

!
interface VLAN1
no ip address
no ip directed-broadcast
no ip route-cache

!--- Full configuration output is suppressed.

```

If you view the outputs from member Switch–1 and member Switch–2 configurations, you notice the inheritance by the member switches of the enable password and the host name, appended with a number of the command switch.



If a host name was not assigned previously to the member switch (as in this example), the command switch appends a unique member number to the command switch host name; the command switch then assigns the number sequentially to the switch when the switch joins the cluster. The number indicates the order in which the switch joined the cluster. In this example, the command switch has the default host name Switch. The first member switch (WS-C2916MXL) takes the host name Switch-1. The second member switch (WS-C3512XL) takes the host name Switch-2.

**Note:** If the member switch already has a host name, the switch retains that host name when it joins the cluster. If the member switch leaves the cluster, the host name remains.

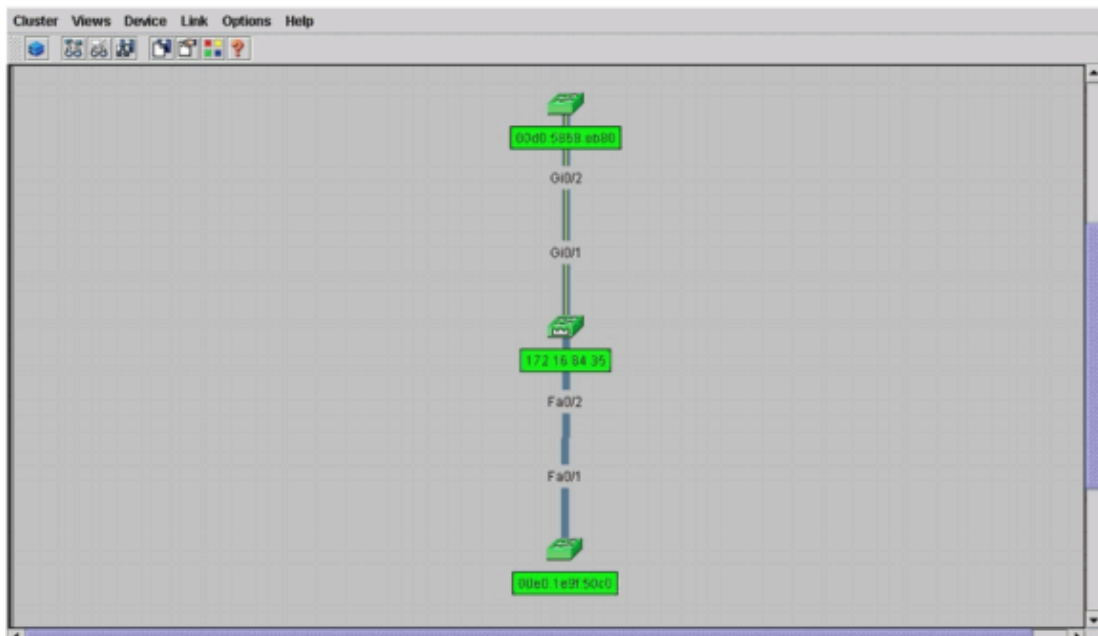
The member switch also inherits the command switch **enable secret** or **enable password** when the switch joins the cluster. It retains the password when it leaves the cluster as well. If you have not configured a command switch password, the member switch inherits a null password.

13. Choose **Views > Toggle labels** to see more detailed cluster information.

The window displays this additional information:

- ◆ MAC address of the member switches
- ◆ IP address of the command switch
- ◆ Port numbers and the type of links (Fast Ethernet or Gigabit Ethernet links)

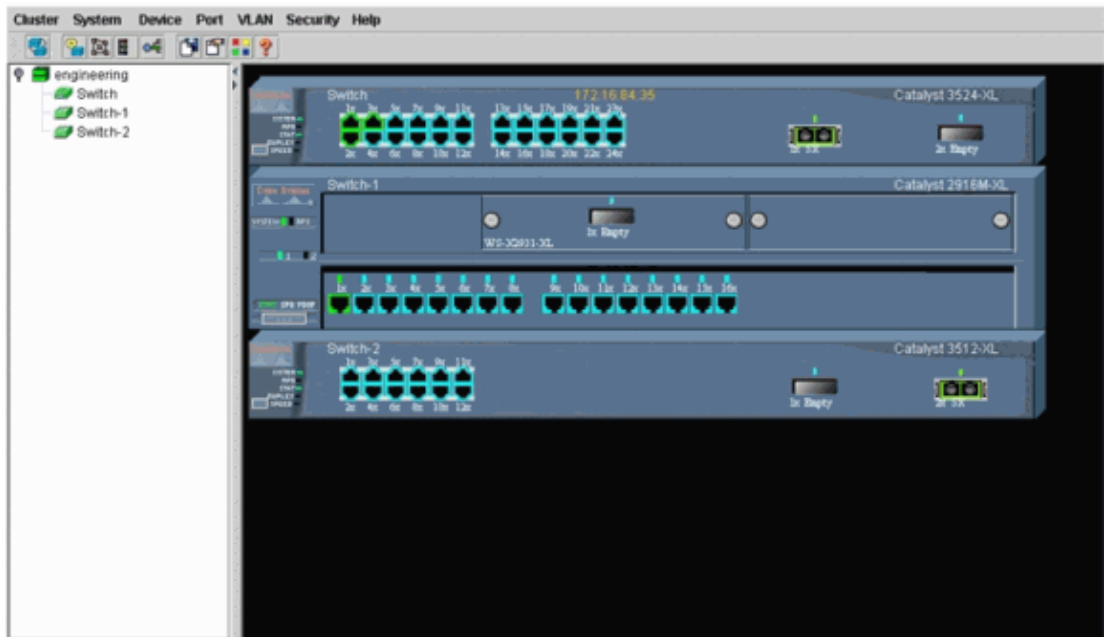
**Figure 10**



14. To see an image of all the switches in the cluster, choose **Cluster > Go to Cluster Manager**.

The Cluster Manager appears. It displays a view of the switches in a cluster form:

**Figure 11**



You can use Cluster Manager to manage and configure changes within a cluster. You can use it to monitor and configure ports, change the management VLAN, and change the host name. Cluster management and how to perform different configuration tasks with Cluster Manager are beyond the scope of this document, however. For these details, refer to the documents:

- ◆ *Changing the Management VLAN* section of *Creating and Managing Clusters (2900XL/3500XL)*
- ◆ *Changing the Management VLAN* section of *Creating and Managing Clusters (2950, 2955, and 2940/2970)*

## Add a Member in an Existing Cluster

This section describes how to add a member switch to a cluster that already exists. The example adds a Catalyst 2924MXL switch in the cluster, as you see in Figure 10.

Complete these steps to add another member in the cluster with CMS:

1. Connect the switch that you want to add to one of the ports on either the command or the member switch.

In the Lab Scenarios section of this document, the new switch connects to the **fastethernet 0/2** interface of the command switch. Be sure that the ports that connect the two switches belong to the same management VLAN or that the ports are trunk ports. Also in the Lab Scenarios, all the ports belong to VLAN1, which is the management VLAN by default.

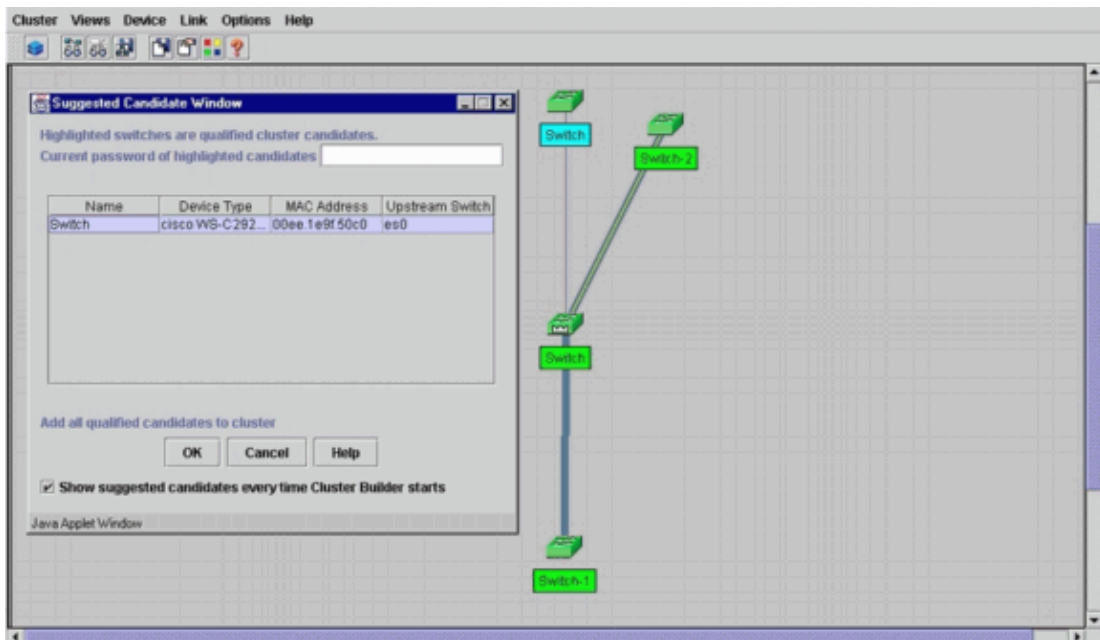
**Note:** Access to all the cluster management facilities is through the command switch IP address. The command switch IP address always belongs to the management VLAN (VLAN1, by default). All switches within the switch cluster must have the same management VLAN as the command switch. As of Cisco IOS Software Release 12.0(5)XP for the 2900XL and 3500XL switches, you can change the management VLAN from the default of VLAN1. In addition, Cisco IOS Software Release 12.0(5)XU or later allows you to change the management VLAN for the entire switch cluster. The change requires a single command via the CMS Web Interface. For details on how to change the management VLAN, refer to these documents:

- ◆ *Changing the Management VLAN section of Creating and Managing Clusters (2900XL/3500XL)*
- ◆ *Changing the Management VLAN section of Creating and Managing Clusters (2950, 2955, and 2940/2970)*

2. In your browser, choose **Cluster > Cluster Management**.

The action opens the Cluster Builder in a new browser window and displays this screen:

**Figure 12**



You can see that the Suggested Candidate window lists the new switch (2924MXL) as a candidate switch. Figure 12 also shows that there is a new switch, in blue. The new switch connects to the center switch (command switch). When this candidate switch becomes a member of the cluster, the color changes to green, and the switch is listed as Switch-3.

3. To add the candidate switch to the cluster and update the network map, perform one of these steps:

- ◆ Click **OK** in the Suggested Candidate window and wait for a few seconds.

This shows a network map update with the new switch, Switch-3.

- ◆ Or, click the candidate switch, as you see in Figure 13, and then choose **Add to Cluster**.

**Figure 13**

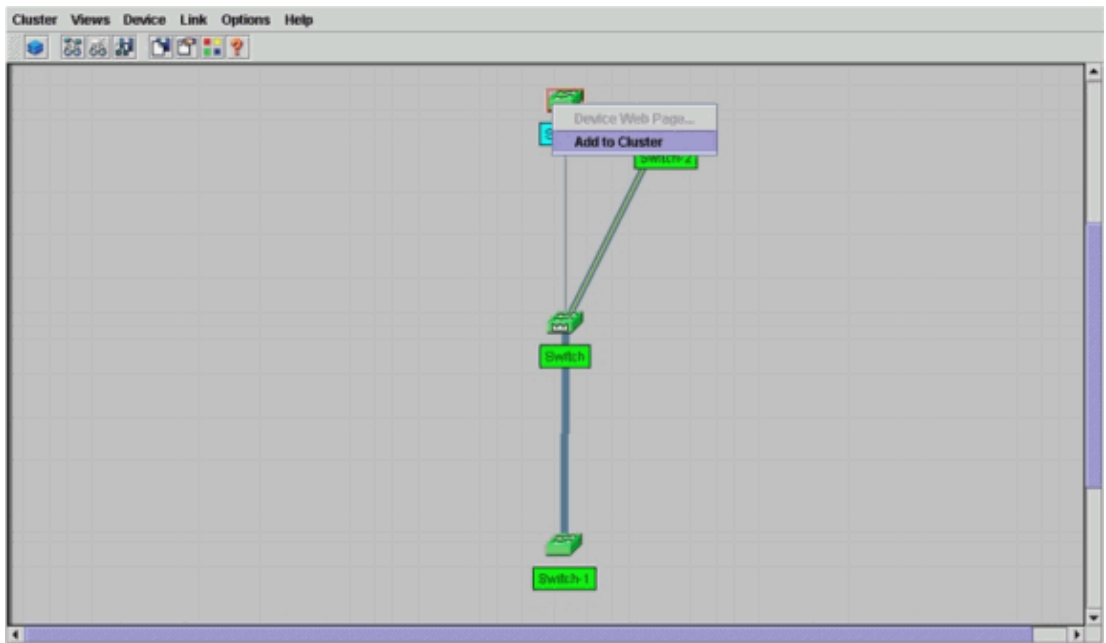
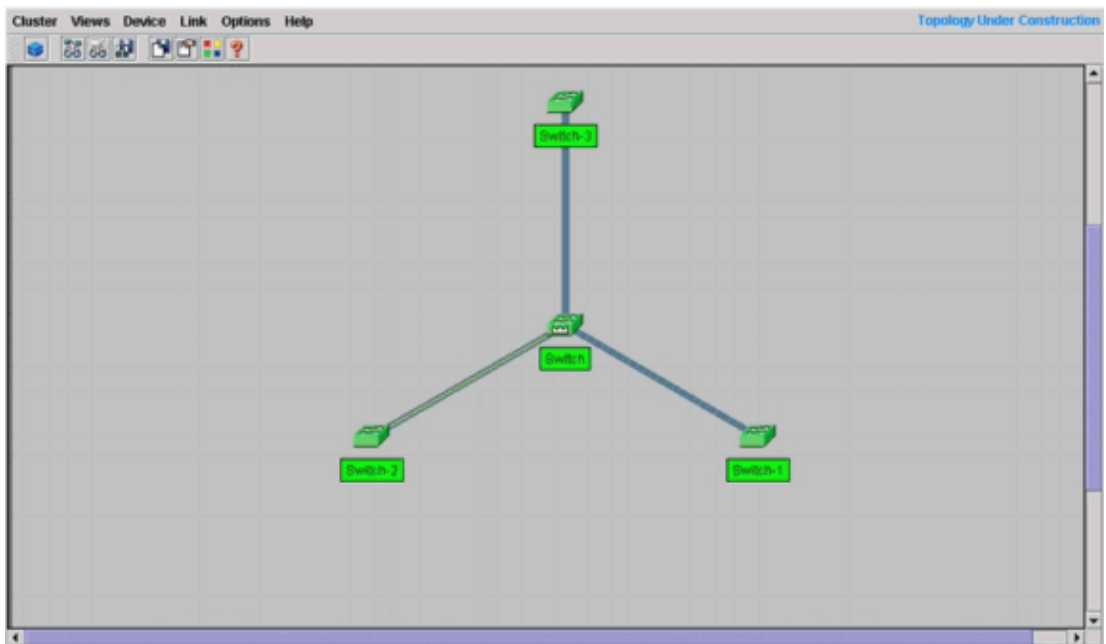
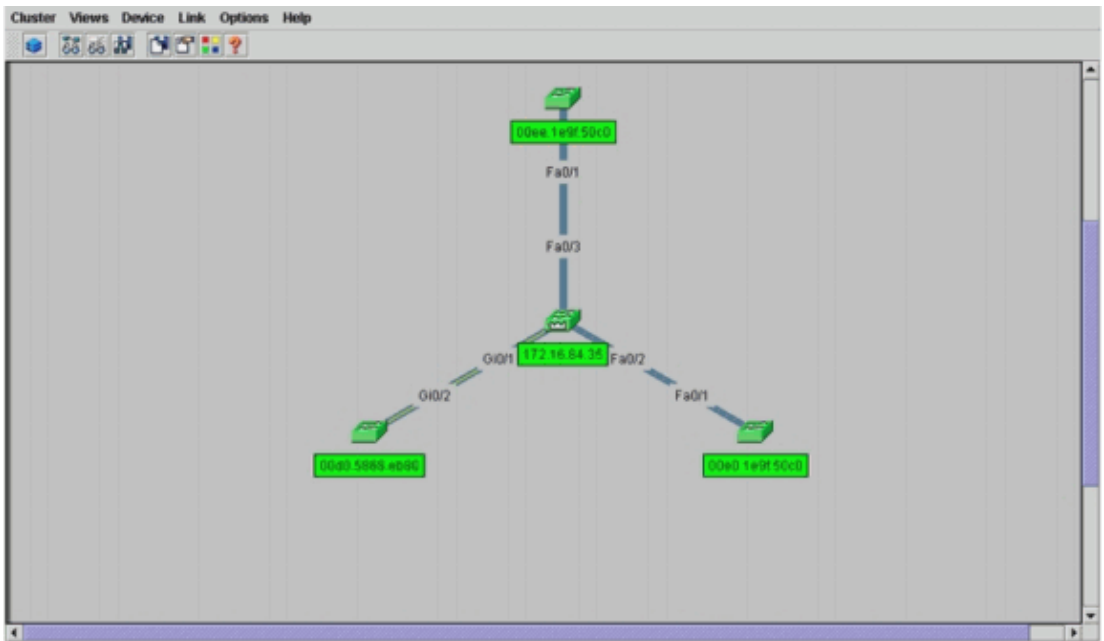


Figure 14



4. Choose **Views > Toggle Labels** to see more details on the network map.

Figure 15



If you want to verify this cluster, issue these commands on the command switch and new member switch, Switch-3:

◆ Command Switch (center switch, 3524XL)

```

Switch# show cluster
Command switch for cluster "engineering"
Total number of members:          4
Status:                            0 members are unreachable
Time since last status change:    0 days, 0 hours, 7 minutes
Redundancy:                        Disabled
Heartbeat interval:                8
Heartbeat hold-time:              80
Extended discovery hop count:     3
  
```

```
Switch# show cluster members
```

SN	MAC Address	Name	PortIf	FEC	Hops
0	00d0.5868.f180	Switch			
1	00e0.1e9f.50c0	Switch-1	Fa0/1		
2	00d0.5868.eb80	Switch-2	Gi0/2		
3	<b>00ee.1e9f.50c0</b>	<b>Switch-3</b>	<b>Fa0/1</b>		

```
Switch# show cluster view
```

SN	MAC Address	Name	Device Type	PortIf	FEC	Hops
0	00d0.5868.f180	Switch	WS-C3524-XL			0
1	00e0.1e9f.50c0	Switch-1	WS-C2916M-XL	Fa0/1		1
2	0d0.5868.eb80	Switch-2	WS-C3512-XL	Gi0/2		1
3	<b>00ee.1e9f.50c0</b>	<b>Switch-3</b>	<b>WS-C2924M-XL</b>	<b>Fa0/1</b>		<b>1</b>

The changes that take place in the configuration file of the command switch after you perform Step 4 appear here in **bold**:

```

!
ip subnet-zero
cluster enable engineering 0
cluster member 1 Mac-address 00e0.1e9f.50c0
cluster member 2 Mac-address 00d0.5868.eb80
  
```

```

cluster member 3 Mac-address 00ee.1e9f.50c0
!
!
!

!--- Full configuration output is suppressed.

```

**Note:** When a candidate switch becomes a member switch, the command switch configuration adds the member switch MAC address. Also, the member switch configuration adds the command switch MAC address.

◆ Member Switch-3 (2924MXL)

```

Switch-3# show cluster
Member switch for cluster "engineering"
  Member number:      3
  Management IP address: 172.16.84.35
  Command switch Mac address: 00d0.5868.f180
  Heartbeat interval: 8
  Heartbeat hold-time: 80
Switch-3#

```

The management IP address is the IP address of the command switch.

The changes that take place in the configuration file of the command switch after you perform Step 4 appear here in **bold**:

```

!
hostname Switch-3
!
enable password mysecret
!
!
ip subnet-zero
!
cluster commander-address 00d0.5868.f180 member 3 name engineering
!
interface VLAN1
no ip address
no ip directed-broadcast
no ip route-cache

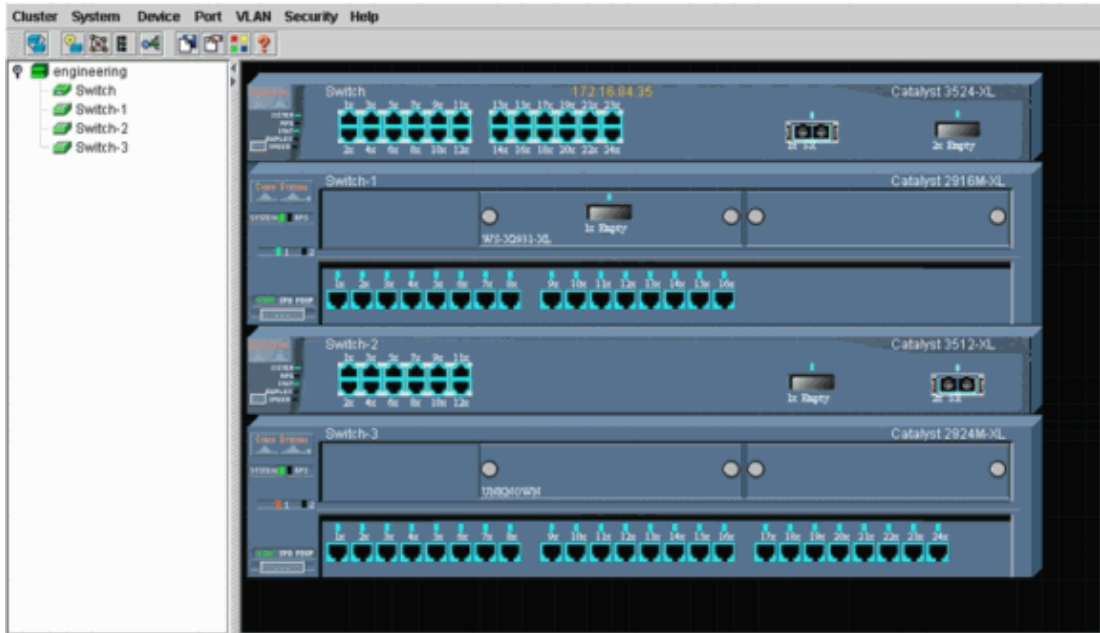
!--- Full configuration output is suppressed.

```

5. Choose **Cluster > Go to Cluster Manager**.

Cluster Manager appears, as you see in Figure 16. This view is updated from Figure 11 and shows the newly added switch (2924MXL) in the list:

**Figure 16**



## debug and show Commands

- show cluster
- show cluster members
- show cdp neighbors
- show cdp neighbors detail
- debug cluster member
- debug cluster neighbors
- debug cluster events
- debug cluster ip

## Sample show Command Output

### show cluster and show cluster members

Use the **show cluster** and **show cluster members** commands to check the status of the cluster and the members.

- Command Switch (center switch, 3524XL)

```
Switch# show cluster
Command switch for cluster "engineering"
Total number of members:      4
Status:                       0 members are unreachable
Time since last status change: 0 days, 0 hours, 7 minutes
Redundancy:                   Disabled
Heartbeat interval:           8
Heartbeat hold-time:          80
Extended discovery hop count:  3
```

```
Switch# show cluster members

SN MAC Address      Name          PortIf FEC Hops   |---Upstream---| SN PortIf FEC State
0 00d0.5868.f180 Switch          0          0          |              |          Up (Cmdr)
```

1	00e0.1e9f.50c0	Switch-1	Fa0/1	1	0	Fa0/2	Up
2	00d0.5868.eb80	Switch-2	Gi0/2	1	0	Gi0/1	Up
3	00ee.1e9f.50c0	Switch-3	Fa0/1	1	0	Fa0/3	Up

If one of the member switches loses connectivity to the command switch, the output of the **show cluster** and **show cluster members** commands reflects the loss.

For example, if member Switch-2 loses connectivity to the command switch, the output of these commands is:

```
Switch# show cluster
Command switch for cluster "engineering"
Total number of members: 4
Status: 1 members are unreachable
Time since last status change: 0 days, 0 hours, 0 minutes
Redundancy: Disabled
Heartbeat interval: 8
Heartbeat hold-time: 80
Extended discovery hop count: 3

Switch#

Switch# show cluster member
```

SN	MAC Address	Name	PortIf	FEC	Hops	SN	PortIf	FEC	State
0	00d0.5868.f180	Switch			0				Up (Cmdr)
1	00e0.1e9f.50c0	Switch-1	Fa0/1		1	0	Fa0/2		Up
2	00d0.5868.eb80	Switch-2			1				Down
3	00ee.1e9f.50c0	Switch-3	Fa0/1		1	0	Fa0/3		Up

**Note:** You do not see immediately the changes reflected by these commands. The command switch has to wait a certain interval (`Heartbeat hold-time`) before the command switch declares a member switch down. By default, heartbeat holdtime is 80 seconds. This is a configurable parameter. You can change the parameter if you issue the **cluster holdtime 1-300** command in global configuration mode.

- Member Switch-1 (2916MXL)

```
Switch-1# show cluster
Cluster member 1
Cluster name: engineering
Management ip address: 172.16.84.35
Command device Mac address: 00d0.5868.f180
Switch-1#
```

- Member Switch-2 (top switch, 3512XL)

```
Switch-2# show cluster
Member switch for cluster "engineering"
Member number: 2
Management IP address: 172.16.84.35
Command switch Mac address: 00d0.5868.f180
Heartbeat interval: 8
Heartbeat hold-time: 80
Switch-2#
```

- Member Switch-3 (2924MXL)

```
Switch-3# show cluster
Member switch for cluster "engineering"
Member number: 3
Management IP address: 172.16.84.35
```



```

Command switch Mac address:    00d0.5868.f180
Heartbeat interval:           8
Heartbeat hold-time:         80
Switch-3#

```

## show cdp neighbors and show cdp neighbors detail

As discussed in the Candidate Switch and Member Switch Characteristics section of this document, all the switches, including the command switch, use CDPv2 to discover the CDP neighbors. The switches store this information in the respective CDP neighbor cache. When the command switch receives the information, the switch filters the CDP neighbor caches and creates a list of candidate switches.

Use the **show cdp neighbors** and **show cdp neighbors detail** commands to verify that the switches are in the CDP neighbor cache and that all the switches currently run CDPv2.

- Command Switch (3524XL)

```

Switch# show cdp neighbors
Capability Codes: R - Router, T - Trans Bridge, B - Source Route Bridge
                  S - Switch, H - Host, I - IGMP, r - Repeater

Device ID      Local Intrfce   Holdtme    Capability   Platform  Port ID
Switch-3      Fas 0/3         162        T S          WS-C2924M-Fas 0/1
Switch-2      Gig 0/1         121        T S          WS-C3512-XGig 0/2
Switch-1      Fas 0/2         136        S           WS-C2916M-Fas 0/1

```

```

Switch# show cdp neighbors detail

```

```

-----
Device ID: Switch-3
Entry address(es):
Platform: cisco WS-C2924M-XL, Capabilities: Trans-Bridge Switch
Interface: FastEthernet0/3, Port ID (outgoing port): FastEthernet0/1
Holdtime : 132 sec

```

*!--- Output suppressed.*

```

advertisement version: 2
Protocol Hello: OUI=0x00000C, Protocol ID=0x0112; payload len=25,
value=0AA050C000000003010103FF00D05868F18000EE1E9F50C001
VTP Management Domain: ''

```

```

-----
Device ID: Switch-2
Entry address(ES):
  IP address: 0.0.0.0
  IP address: 172.16.84.35
Platform: cisco WS-C3512-XL, Capabilities: Trans-Bridge Switch
Interface: GigabitEthernet0/1, Port ID (outgoing port): GigabitEthernet0/2
Holdtime : 141 sec

```

*!--- Output suppressed.*

```

advertisement version: 2
Protocol Hello: OUI=0x00000C, Protocol ID=0x0112; payload Len=27,
value=0A68EB8000000002010123FF00D05868F18000D05868EB80010001
VTP Management Domain: ''
Duplex: full

```

```
-----  
Device ID: Switch-1  
Entry address(Es):  
    IP address: 172.16.84.35  
Platform: cisco WS-C2916M-XL, Capabilities: Switch  
Interface: FastEthernet0/2, Port ID (outgoing port): FastEthernet0/1  
Holdtime : 140 sec
```

*!--- Output suppressed.*

```
advertisement version: 2  
Protocol Hello: OUI=0x00000C, Protocol ID=0x0112; payload Len=25,  
value=0A9F50C000000001010103FF00D05868F18000E01E9F50C001  
VTP Management Domain: ''
```

#### • Member Switch-1 (2916MXL)

```
Switch-1# show cdp neighbors  
Capability Codes: R - Router, T - Trans Bridge, B - Source Route Bridge  
                  S - Switch, H - Host, I - IGMP, r - Repeater  
  
Device ID          Local Intrfce    Holdtme    Capability  Platform  Port ID  
Switch           Fas 0/1        139       T S        WS-C3524-XFas 0/2
```

```
Switch-1# show cdp neighbors detail
```

```
-----  
Device ID: Switch  
Entry address(Es):  
    IP address: 172.16.84.35  
    IP address: 172.16.84.35  
Platform: cisco WS-C3524-XL, Capabilities: Trans-Bridge Switch  
Interface: FastEthernet0/1, Port ID (outgoing port): FastEthernet0/2  
Holdtime : 147 sec
```

*!--- Output suppressed.*

```
advertisement version: 2  
Protocol Hello: OUI=0x00000C, Protocol ID=0x0112; payload Len=27,  
value=0A68F18000000000010123FF00D05868F18000D05868F180000001  
VTP Management Domain: ''
```

#### • Member Switch-2 (3512XL)

```
Switch-2# show cdp neighbors  
Capability Codes: R - Router, T - Trans Bridge, B - Source Route Bridge  
                  S - Switch, H - Host, I - IGMP, r - Repeater  
  
Device ID          Local Intrfce    Holdtme    Capability  Platform  Port ID  
Switch           Gig 0/2        147       T S        WS-C3524-XGig 0/1
```

```
Switch-2# show cdp neighbors detail
```

```
-----  
Device ID: Switch  
Entry address(Es):  
    IP address: 172.16.84.35  
    IP address: 172.16.84.35  
Platform: cisco WS-C3524-XL, Capabilities: Trans-Bridge Switch  
Interface: GigabitEthernet0/2, Port ID (outgoing port): GigabitEthernet0/1  
Holdtime : 141 sec
```

*!--- Output suppressed.*

```

advertisement version: 2
Protocol Hello: OUI=0x00000C, Protocol ID=0x0112; payload Len=27,
value=0A68F1800000000010123FF00D05868F18000D05868F180000001
VTP Management Domain: '' Duplex: full

```

- Member Switch-3 (2924MXL)

```

Switch-3# show cdp neighbors
Capability Codes: R - Router, T - Trans Bridge, B - Source Route Bridge
                  S - Switch, H - Host, I - IGMP, r - Repeater

Device ID           Local Intrfce   Holdtme    Capability Platform Port ID
Switch              Fas 0/1        125        T S         WS-C3524-XFas 0/3

```

```

Switch-3# show cdp neighbors detail

```

```

-----
Device ID: Switch
Entry address(Es):
    IP address: 172.16.84.35
    IP address: 172.16.84.35
Platform: cisco WS-C3524-XL, Capabilities: Trans-Bridge Switch
Interface: FastEthernet0/1, Port ID (outgoing port): FastEthernet0/3
Holdtime : 179 sec

```

```

!--- Output suppressed.

```

```

advertisement version: 2
Protocol Hello: OUI=0x00000C, Protocol ID=0x0112; payload Len=27,
value=0A68F1800000000010123FF00D05868F18000D05868F180000001
VTP Management Domain: ''

```

**Note:** If you do not see `advertisement version: 2` in the `show cdp neighbors detail` command output for a switch, that switch cannot become a member switch.

## Sample debug Command Output

This section discusses the **debug** commands that verify the cluster activity. Here, the commands verify the cluster activity between the command switch (3524XL) and member Switch-2 (3512XL). You can use the same **debug** commands to verify the cluster activity between the command switch and any of the member switches.

**Note:** Whenever there is an addition or removal of a member with use of the Web Interface, you see the log of this information:

```

%CMP-CLUSTER_MEMBER_2-5-REMOVE:
The Device is removed from the cluster (Cluster Name: engineering)

%CMP-CLUSTER_MEMBER_2-5-ADD:
The Device is added to the cluster(Cluster Name: engineering, CMDR IP Address 172.16.84.35)

```

### debug cluster member, debug cluster neighbors, and debug cluster events

The first two **debug** commands in these examples, **debug cluster member** and **debug cluster neighbors**, show the *outgoing* cluster neighbor updates from a command switch or a member switch. The third **debug** command, **debug cluster events**, shows *incoming* neighbor hellos. Between the commands, comments in blue enhance the visibility of certain outputs. Also, this display suppresses unnecessary information from the

complete **debug** output.

- Command Switch (3524XL)

```
Switch# debug cluster members
Cluster members debugging is on
Switch#
23:21:47: Sending neighbor update...
23:21:47:
Cluster Member: 00, active.

!--- Member 00 means commander switch.

23:21:47:          Unanswered heartbeats: 1
23:21:47:          Hops to commander:      0
23:21:47:          Assigned CMP address: 10.104.241.128

!--- This is the commander CMP address.

23:21:47:          Cmdr IP address:      172.16.84.35
23:21:47:          Cmdr CMP address:    10.104.241.128

!--- This is the commander CMP address.

23:21:47:          Auto update counter:    0
23:21:47:          Cmdr MAC address:    00d0.5868.f180
23:21:47:          Mbr  MAC address:    00d0.5868.f180
23:21:47:          Command Port ID:
23:21:47:          Platform Name:      cisco WS-C3524-XL
23:21:47:          Host Name:          Switch

Switch# debug cluster neighbors
Cluster neighbors debugging is on
Switch#
23:51:50:          Neighbor update from member 0

!--- This is an update from the commander.

23:51:50:          3 Cluster neighbors:

!--- Information about member Switch-2 starts here.

23:51:50:          00d0.5868.eb80 connected to Member 0 on port GigabitEthernet0/2
23:51:50:          Port Macaddr: 00d0.5868.eb8e
23:51:50:          Hostname: Switch-2
23:51:50:          Port ID: GigabitEthernet0/2
23:51:50:          Neighbor FEC: 255
23:51:50:          Member FEC: 255
23:51:50:          Capabilities: 0A
23:51:50:          Link Qualification: 0
23:51:50:          Qualification Note: 21
23:51:50:          Member 2 of stack with commander 0.104.187.140
23:51:50:          CMP address: 10.104.235.128
23:51:50:          Hops to Commander: 1
23:51:50:          Management vlan: 1

!--- Information about member Switch-2 ends here.

!--- Information about member Switch-1 starts here.

23:51:50:          00e0.1e9f.50c0 connected to Member 0 on port FastEthernet0/2
```

```
23:51:50:      Port Macaddr: 00e0.1e9f.50c1
23:51:50:      Hostname: Switch-1
23:51:50:      Port ID: FastEthernet0/1
23:51:50:      Neighbor FEC: 255
23:51:50:      Member FEC: 255
23:51:50:      Capabilities: 08
23:51:50:      Link Qualification: 3
23:51:50:      Qualification Note: 01
23:51:50:      Member 1 of stack with commander 0.77.44.124
23:51:50:      CMP address: 10.159.80.192
23:51:50:      Hops to Commander: 1
23:51:50:      Management vlan: 0
```

*!--- Information about member Switch-1 ends here.*

*!--- Information about member Switch-3 starts here.*

```
23:51:50:      00ee.1e9f.50c0 connected to Member 0 on port FastEthernet0/3
23:51:50:      Port Macaddr: 00ee.1e9f.50c1
23:51:50:      Hostname: Switch-3
23:51:50:      Port ID: FastEthernet0/1
23:51:50:      Neighbor FEC: 255
23:51:50:      Member FEC: 255
23:51:50:      Capabilities: 0A
23:51:50:      Link Qualification: 3
23:51:50:      Qualification Note: 00
23:51:50:      Member 3 of stack with commander 0.77.184.56
23:51:50:      CMP address: 10.160.80.192
23:51:50:      Hops to Commander: 1
23:51:50:      Management vlan: 1
```

*!--- Information about member Switch-3 ends here.*

*!--- The information that follows is from Switch-2, as seen on  
!--- the command switch.  
!--- You can see the same information if you issue the  
!--- debug cluster events command on certain versions  
!--- of codes.*

```
Cluster neighbor's Protocol Hello payload:
23:52:00:      Sender Version: 1, Works with version 1 and later
23:52:00:      Flags: 23, Number of hops to the commander: 1
23:52:00:      Cluster member number: 2
23:52:00:      Cluster Cmdr Mac Address: 00d0.5868.f180
23:52:00:      Sender Mac address: 00d0.5868.eb80
```

*!--- This is the Switch-2 MAC address.*

```
23:52:00:      Sender CMP address: 10.104.235.128
```

*!--- This is the Switch-2 CMP address.*

```
23:52:00:      Upstream switch No: 0.0.0.0
23:52:00:      FEC Number: 255
23:52:00:      Management vlan: 1
```

*!--- Output suppressed.*

- Member Switch-2 (3512XL)

```

Switch-2# debug cluster member
Cluster members debugging is on
Switch-2#
23:22:51:      Sending neighbor update...
23:22:51:      Switch 00d0.5868.f180 connected on port GigabitEthernet0/2

!--- This is the command switch MAC address local port.

23:22:51:      Port ID: GigabitEthernet0/2
23:22:51:      Capabilities: 0A
23:22:51:      Link Qualification: 5
23:22:51:      Qualification Note: 20
23:22:51:      Member 0 of stack with commander 00d0.5868.f180
23:22:51:      CMP address: 10.104.241.128

!--- This is the commander CMP address.

23:22:51:      Hops to Commander: 0
23:22:51:      Management vlan: 1*
23:22:51:

!--- Up to this point, the information is about the command switch.
!--- The output that follows is the local switch information that goes to the
!--- neighbor (command) switch.

Cluster Member: 02, active.
23:22:51:      Unanswered heartbeats: 1
23:22:51:      Hops to commander: 1
23:22:51:      Assigned CMP address: 10.104.235.128
23:22:51:      Cmdr IP address: 172.16.84.35
23:22:51:      Cmdr CMP address: 10.104.241.128
23:22:51:      Auto update counter: 0
23:22:51:      Cmdr MAC address: 00d0.5868.f180
23:22:51:      Mbr MAC address: 00d0.5868.eb80
23:22:51:      Command Port ID: GigabitEthernet0/2

!--- This is the port that connects to the commander.

23:22:51:      Platform Name: cisco WS-C3512-XL
23:22:51:      Host Name: Switch-2
Switch-2#

Switch-2# debug cluster neighbors
Cluster neighbors debugging is on
Switch-2#
23:59:32: cmi_setCommandPort: setting ups mbr num to 0
23:59:32: cmp_sendNeighborsToCmdr: skip neighbor 00d0.5868.f180
Switch-2#
23:59:42:

!--- Information that follows is from the command switch.
!--- You can see the same information if you issue the
!--- debug cluster events command on certain versions
!--- of codes.

Cluster neighbor's Protocol Hello payload:
23:59:42:      Sender Version: 1, Works with version 1 and later
23:59:42:      Flags: 23, Number of hops to the commander: 0
23:59:42:      Cluster member number: 0
23:59:42:      Cluster Cmdr Mac Address: 00d0.5868.f180
23:59:42:      Sender Mac address: 00d0.5868.f180

!--- This is the commander MAC address.

```

```
23:59:42:      Sender CMP Address: 10.104.241.128
```

```
!--- This is the commander CMP address.
```

```
23:59:42:      Upstream switch No: 0.0.0.0
```

```
23:59:42:      FEC Number: 255
```

```
23:59:42:      Management vlan: 1
```

## debug cluster ip

A CMP Address field appears in the **debug** command output. As the Cluster Management Protocol section explains, the commander and member switches communicate with use of these CMP addresses.

If you view the outputs in the **debug cluster member**, **debug cluster neighbors**, and **debug cluster events** section, you can see that the CMP addresses of the switches in this example are:

- Commander CMP address: **10.104.241.128**
- Member Switch-1 CMP address: **10.159.80.192**
- Member Switch-2 CMP address: **10.104.235.128**
- Member Switch-3 CMP address: **10.160.80.192**

As the Cluster Management Protocol section discusses, CMP consists of three key technology pieces. One of them is the CMP/RARP mechanism. CMP/RARP also adds and removes switches from the cluster. The **debug** output below shows the log of CMP/RARP messages at the addition of a member to the cluster.

**Note:** To be consistent with the commands in the **debug cluster member**, **debug cluster neighbors**, and **debug cluster events** section, here you issue the **debug cluster ip** command on the commander (3524XL) and the second switch to add (Switch-2, 3512XL).

- Commander Switch (3524XL) (the addition of member Switch-2)

```
Switch# debug cluster ip
Cluster IP/transport debugging is on
Switch#
```

```
!--- The command switch generates the new CMP address.
```

```
1d08h: cmdr_generate_cluster_ip_address: generated cluster,
ip addr 10.104.235.128 for Mac 00d0.5868.eb80
```

```
!--- The commander allocates the CMP address to member Switch-2.
```

```
1d08h: cmdr_generate_and_assign_ip_address:
setting addr for member 2 addr 10.104.235.128
```

```
1d08h: cmdr_generate_and_assign_ip_address:
```

```
adding static ARP for 10.104.235.128
```

```
1d08h: cluster_send_rarp_reply:
```

```
Sending reply out on Virtual1 to member 2
```

```
1d08h: cmdr_process_rarp_request: received RARP req :
```

```
1d08h: proto type : 0000
```

```
1d08h: source Mac : 00d0.5868.eb80
```

```
!--- This is the member MAC Address.
```

```
1d08h: source ip : 10.104.235.128
```

*!--- This is the member CMP Address.*

1d08h: target Mac : 00d0.5868.f180

*!--- This is the commander MAC Address.*

1d08h: target ip : 10.104.241.128

*!--- This is the commander CMP Address.*

1d08h: cmdr\_process\_rarp\_request: rcvd ACK for the bootstrap req

- Member Switch-2 (3512XL) (which the commander adds)

```
Switch# debug cluster ip
Cluster IP/transport debugging is on
Switch#
```

*!--- The member switch receives information from the command switch.*

00:01:24: cluster\_process\_rarp\_reply: received RARP reply :  
00:01:24: source Mac : 00d0.5868.f180

*!--- This is the commander MAC Address.*

00:01:24: source ip : 10.104.241.128

*!--- This is the commander CMP Address.*

00:01:24: target Mac : 00d0.5868.eb80

*!--- This is the member MAC Address.*

00:01:24: target ip : 10.104.235.128

*!--- This is the member CMP Address.*

*!--- The member switch extracts and implements the cluster information.*

```
00:01:24: cluster_process_rarp_reply:
setting commander's MAC address: 00d0.5868.f180
00:01:24: create_cluster_idb: creating HWIDB(0x0) for the cluster
00:01:24: cluster_create_member_idb:
creating cluster-idb 4D4378, cmp-addr: 10.104.235.128
00:01:24: Authorizing the password string:
00:01:24: cluster_send_rarp_request: Sending request out to cmdr
00:01:24: cluster_process_rarp_reply:
created hwidb and set IP address (10.104.235.128)
00:01:24: cluster_process_rarp_reply:
setting commander's addr (10.104.241.128) info
00:01:24: cluster_process_rarp_reply:
setting static ARP for cmdr addr 10.104.241.128
00:01:24: cluster_set_default_gateway:
setting default gw to cmdr's addr (10.104.241.128)
00:01:24: setting hostname to Switch-2
00:01:24: setting password to enable password 0 mysecret
00:01:24: cluster_pick_defaultidb: picking cluster IDB to be default IDB
00:01:24: This switch is added to the cluster
00:01:24: Cluster Name : engineering ; Cmdr IP address: 172.16.84.35
00:01:24: CMP address: 10.104.235.128 ; Cmdr CMP address: 10.104.241.128
```

*!--- At this point, the switch has been added to the cluster.*

```
00:01:24: %CMP-CLUSTER_MEMBER_2-5-ADD: The Device is added to the cluster
(Cluster Name: engineering, CMDR IP Address 172.16.84.35)
```



```
00:01:24: cluster_process_rarp_reply: bootstrap for the firsttime, start member
00:01:24: cluster_process_rarp_reply: setting netsareup to TRUE
```

## Use of rcommand for Remote CLI Administration

This last portion of the **debug** analysis explains how CMP/IP works. As the Cluster Management Protocol section of this document discusses, CMP/IP is the transport mechanism to exchange management packets between the command switch and member switches.

One example is the use of **rcommand**, which is actually a Telnet session from the command switch to the member switch. It uses the same virtual CMP addresses.

1. Establish a Telnet session to the command switch.
2. From the CLI on the command switch, issue **rcommand** to get to the CLI of any of the member switches.

The **rcommand** is helpful in situations in which you want to troubleshoot or make configuration changes on any of the member switches with use of the CLI.

This example demonstrates usage:

```
Switch# rcommand 2

!--- This accesses member Switch-2.

Trying ... Open

Switch-2#

!--- Here, you establish a Telnet session with member Switch-2.

Switch-2# exit

!--- Use this command to end the Telnet session.

[Connection closed by foreign host]
Switch#
```

With the enable of the **debug ip packet** command on the member switch and the issue of **rcommand** from the command switch to that member switch, you see these messages on the console of the member switch:

```
01:13:06: IP: s=10.104.241.128 (Virtual1), d=10.104.235.128, Len 44, rcvd 1

!--- This is a received request from the command switch.

01:13:06: IP: s=10.104.235.128 (local), d=10.104.241.128 (Virtual1), Len 44, sending

!--- A reply returns to the command switch.
```

**Note:** To see this output on the member switch, you first need to establish a direct console connection to the member switch. After you establish the connection, issue the **debug ip packet** command and then open an **rcommand** session from the command switch.

# Appendix

## Cluster Sample Configurations

This section lists complete sample configurations of all the switches that the Lab Scenarios used. You can find details on the configuration steps in the Create Clusters with Cluster Management Suite and Add a Member in an Existing Cluster sections of this document.

### Command Switch

```
Switch# show running-config
Building configuration...
Current configuration:
!
version 12.0
no service pad
service timestamps debug uptime
service timestamps log uptime
no service password-encryption
!
hostname Switch
!
enable password mysecret
!
!
!
!
!
ip subnet-zero
cluster enable engineering 0
cluster member 1 Mac-address 00e0.1e9f.50c0
cluster member 2 Mac-address 00d0.5868.eb80
cluster member 3 Mac-address 00ee.1e9f.50c0
!
!
!
interface FastEthernet0/1
!
interface FastEthernet0/2
!
interface FastEthernet0/3
!
interface FastEthernet0/4
!
interface FastEthernet0/5
!
interface FastEthernet0/6
!
interface FastEthernet0/7
!
interface FastEthernet0/8
!
interface FastEthernet0/9
!
interface FastEthernet0/10
!
interface FastEthernet0/11
!
interface FastEthernet0/12
!
```

```

interface FastEthernet0/13
!
interface FastEthernet0/14
!
interface FastEthernet0/15
!
interface FastEthernet0/16
!
interface FastEthernet0/17
!
interface FastEthernet0/18
!
interface FastEthernet0/19
!
interface FastEthernet0/20
!
interface FastEthernet0/21
!
interface FastEthernet0/22
!
interface FastEthernet0/23
!
interface FastEthernet0/24
!
interface GigabitEthernet0/1
!
interface GigabitEthernet0/2
!
interface VLAN1
ip address 172.16.84.35 255.255.255.0
no ip directed-broadcast
ip Nat outside
!
ip default-gateway 172.16.84.1
ip Nat inside source list 199 interface VLAN1 overload
access-list 199 dynamic Cluster-NAT permit ip any any
!
line con 0
transport input none
stopbits 1
line vty 0 4
login
line vty 5 15
login
!
end

```

## Member Switch-1

```

Switch-1# show running-config
Building configuration...
Current configuration:
!
version 11.2
no service pad
no service udp-small-servers
no service tcp-small-servers
!
hostname Switch-1
!
enable password mysecret
!
!
no spanning-tree vlan 1

```

```

no ip domain-lookup
!
cluster commander-address 00d0.5868.f180
!
interface VLAN1
no ip address
no ip route-cache
!
interface FastEthernet0/1
!
interface FastEthernet0/2
!
interface FastEthernet0/3
!
interface FastEthernet0/4
!
interface FastEthernet0/5
!
interface FastEthernet0/6
!
interface FastEthernet0/7
!
interface FastEthernet0/8
!
interface FastEthernet0/9
!
interface FastEthernet0/10
!
interface FastEthernet0/11
!
interface FastEthernet0/12
!
interface FastEthernet0/13
!
interface FastEthernet0/14
!
interface FastEthernet0/15
!
interface FastEthernet0/16
!
!
line con 0
stopbits 1
line vty 0 4
login
line vty 5 15
login
!
end

```

## Member Switch-2

```

Switch-2# show running-config
Building configuration...
Current configuration:
!
version 12.0
no service pad
service timestamps debug uptime
service timestamps log uptime
no service password-encryption
!
hostname Switch-2
!

```

```

enable password mysecret
!
!
!
!
!
!
ip subnet-zero
!
cluster commander-address 00d0.5868.f180 member 2 name engineering
!
!
interface FastEthernet0/1
!
interface FastEthernet0/2
!
interface FastEthernet0/3
!
interface FastEthernet0/4
!
interface FastEthernet0/5
!
interface FastEthernet0/6
!
interface FastEthernet0/7
!
interface FastEthernet0/8
!
interface FastEthernet0/9
!
interface FastEthernet0/10
!
interface FastEthernet0/11
!
interface FastEthernet0/12
!
interface GigabitEthernet0/1
!
interface GigabitEthernet0/2
!
interface VLAN1
no ip address
no ip directed-broadcast
no ip route-cache
!
!
line con 0
transport input none
stopbits 1
line vty 0 4
login
line vty 5 15
login
!
end

```

### Member Switch-3

```

Switch-3# show running-config
Building configuration...
Current configuration:
!
version 12.0
no service pad

```

```

service timestamps debug uptime
service timestamps log uptime
no service password-encryption
!
hostname Switch-3
!
enable password mysecret
!
!
!
!
!
!
ip subnet-zero
!
cluster commander-address 00d0.5868.f180 member 3 name engineering
!
!
interface FastEthernet0/1
!
interface FastEthernet0/2
!
interface FastEthernet0/3
!
interface FastEthernet0/4
!
interface FastEthernet0/5
!
interface FastEthernet0/6
!
interface FastEthernet0/7
!
interface FastEthernet0/8
!
interface FastEthernet0/9
!
interface FastEthernet0/10
!
interface FastEthernet0/11
!
interface FastEthernet0/12
!
interface FastEthernet0/13
!
interface FastEthernet0/14
!
interface FastEthernet0/15
!
interface FastEthernet0/16
!
interface FastEthernet0/17
!
interface FastEthernet0/18
!
interface FastEthernet0/19
!
interface FastEthernet0/20
!
interface FastEthernet0/21
!
interface FastEthernet0/22
!
interface FastEthernet0/23
!

```

```

interface FastEthernet0/24
!
interface GigabitEthernet1/1
!
interface VLAN1
no ip directed-broadcast
no ip route-cache
!
!
!
line con 0
transport input none
stopbits 1
line vty 5 15
!
end

```

## Additional Information

For information on how to use CMS after initial configuration, refer to the software configuration guide for your switch product:

- Getting Started with CMS on 2940 Series Switches
- Getting Started with CMS on 2950 Series Switches
- Getting Started with CMS on 2970 Series Switches
- Getting Started with CMS on 3550 Series Switches
- Getting Started with CMS on 3750 Series Switches

## NetPro Discussion Forums – Featured Conversations

Networking Professionals Connection is a forum for networking professionals to share questions, suggestions, and information about networking solutions, products, and technologies. The featured links are some of the most recent conversations available in this technology.

NetPro Discussion Forums – Featured Conversations for LAN
Network Infrastructure: LAN Routing and Switching
Network Infrastructure: Getting Started with LANs

## Related Information

- **Cisco IOS Desktop Switching Software Configuration Guide, Release 12.0(5)XU**
- **Catalyst 2950 and Catalyst 2955 Switch Software Configuration Guide, 12.1(20)EA2**
- **Clustering Switches 2940 Configuration Guide**
- **Clustering Switches 3550 Configuration Guide**
- **Clustering Switches 3750 Configuration Guide**
- **Troubleshooting Cisco Visual Switch Manager or Cluster Management Suite Access on the Catalyst 2900 XL/3500 XL/2950/3550 Switch**
- **LAN Product Support Pages**
- **LAN Switching Support Page**
- **Technical Support – Cisco Systems**

